

VORTAC RAP 112.3 Chan 70	APP CRS 141°	Rwy Ldg TDZE Apt Elev	8701 3191 3204
--	------------------------	-----------------------------	---

VOR or TACAN RWY 14

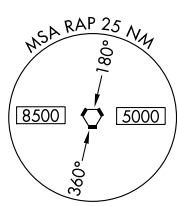
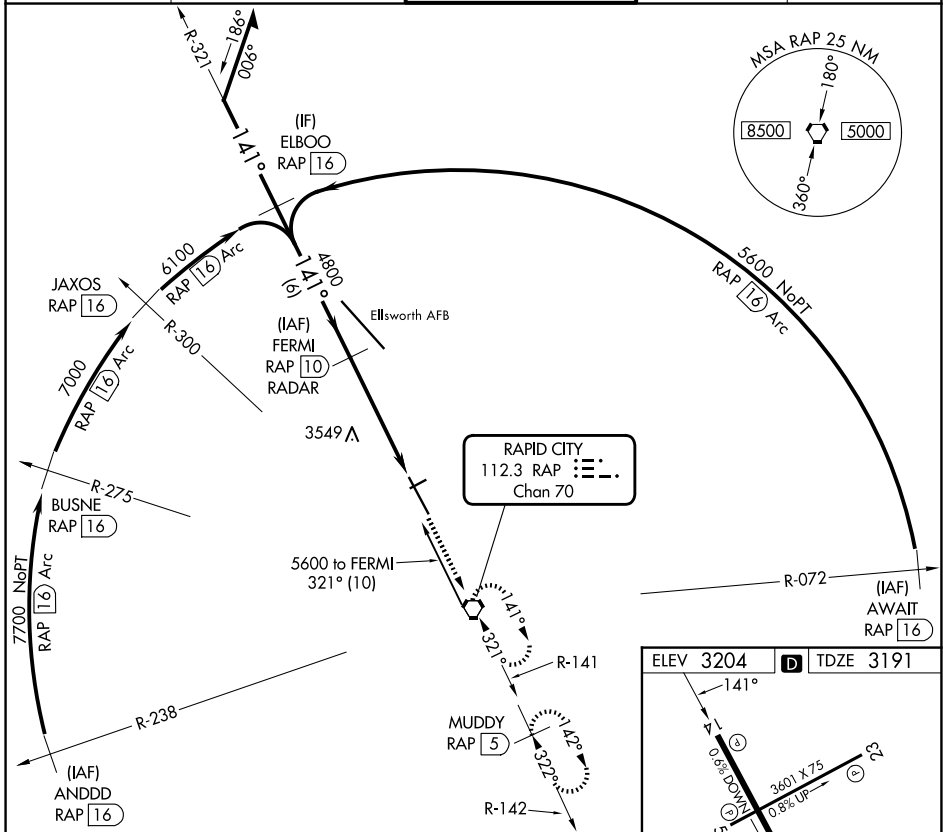
RAPID CITY RGNL (RAP)

DME or RADAR required.

MISSED APPROACH: Climb to 5600 direct RAP VORTAC and hold, continue climb-in-hold to 5600. (TACAN aircraft continue on RAP R-142 to MUDDY 5 DME and hold SE, RT, 322° inbound.)

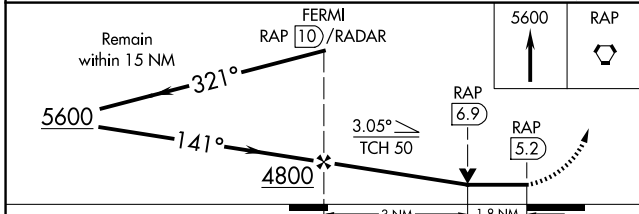
Rwy 14 helicopter visibility reduction below 3/4 SM NA.

ASOS 118.525	ELLSWORTH APP CON* 119.5 259.1	RAPID CITY TOWER* 125.85 (CTAF) 257.8	GND CON 121.9	UNICOM 122.95
------------------------	--	---	-------------------------	-------------------------



NC-1, 16 APR 2026 to 14 MAY 2026

NC-1, 16 APR 2026 to 14 MAY 2026



ELEV 3204	TDZE 3191
-----------	-----------

Detailed diagram of the final approach to RWY 14. It shows a 141° heading from 5600 to 5200, then a 322° heading to 4800, and finally a 321° heading to the runway. Altitudes are 5600, 5200, and 4800. Distances are 0.5% DOWN and 0.8% UP. The runway is 8701 x 150. Other features include REIL Rwy 14, MIRL Rwy 5-23, HIRL Rwy 14-32, and a TWR.

REIL Rwy 14	MIRL Rwy 5-23	HIRL Rwy 14-32
-------------	---------------	----------------

FAF to MAP 4.8 NM

Knots	60	90	120	150	180
Min:Sec	4:48	3:12	2:24	1:55	1:36

CATEGORY	A	B	C	D	E
S-14	3800-1	609 (600-1)	3800-1 3/4	609 (600-1 3/4)	3800-2
CIRCLING	3800-1	3840-1	3860-1 3/4	3940-2 1/4	3960-2 3/4
	596 (600-1)	636 (700-1)	656 (700-1 3/4)	736 (800-2 1/4)	756 (800-2 3/4)