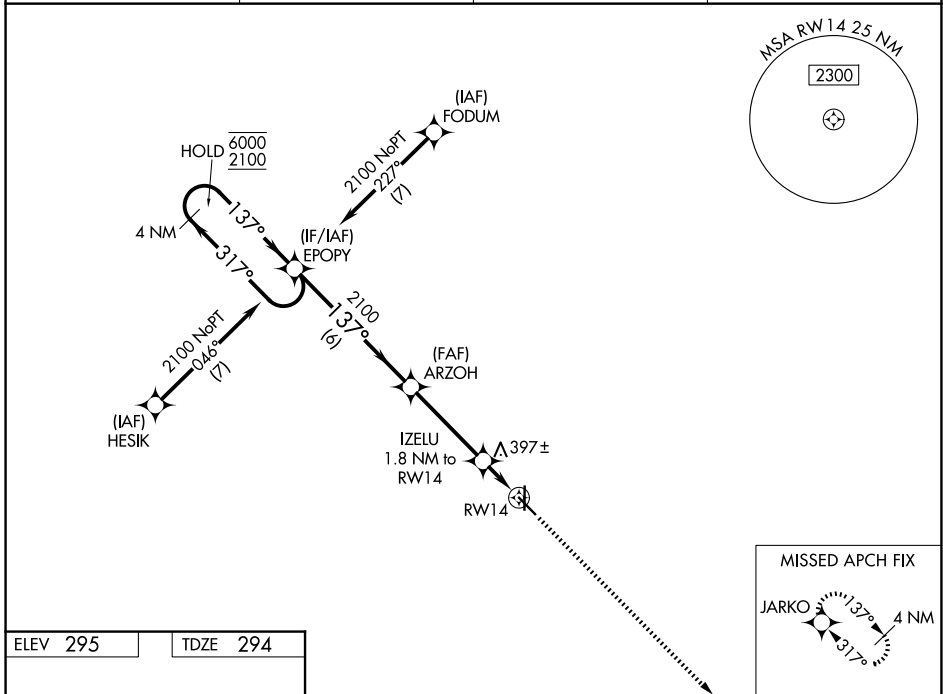


WAAS CH 61315 W14A	APP CRS 137°	Rwy Ldg 5001
		TDZE 294
		Apt Elev 295

RNAV (GPS) RWY 14

MALDEN RGNL (M.A.W)

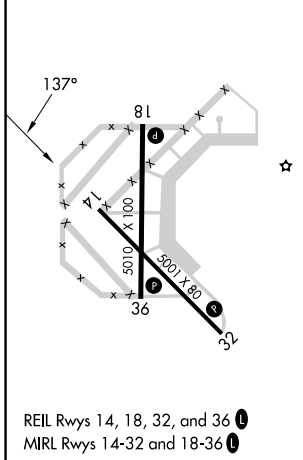
RNP APCH - GPS.		MISSED APPROACH: Climb to 2100 direct JARKO and hold.	
<p>▼ For uncompensated Baro-VNAV systems, LNAV/VNAV ▲ NA below -15°C or above 54°C.</p>			
AWOS-3PT 119.825	MEMPHIS CENTER 133.65 292.15	GCO 135.075	UNICOM 122.8 (CTAF) 0



NC-3, 16 APR 2026 to 14 MAY 2026

NC-3, 16 APR 2026 to 14 MAY 2026

ELEV 295	TDZE 294
----------	----------



4 NM Holding Pattern		EPOPY	ARZOH	IZELU	JARKO
6000 ← 317°		2100	2100	2100	2100
2100		137°	137°	137°	137°
GP 3.00°					
TCH 40					
		6 NM	3.7 NM	0.8	1 NM
CATEGORY	A	B	C	D	
LPV DA	494-1		200 (200-1)		NA
LNAV/VNAV DA	544-1		250 (300-1)		NA
LNAV MDA	660-1		366 (400-1)		NA
CIRCLING	720-1 425 (500-1)	800-1 505 (600-1)	800-1½ 505 (600-1½)		NA