

APP CRS	Rwy Ldg	4000
149°	TDZE	684
	Apt Elev	692

RNAV (GPS) RWY 15

CHAUTAUGUA COUNTY/DUNKIRK (DKK)

RNP APCH.

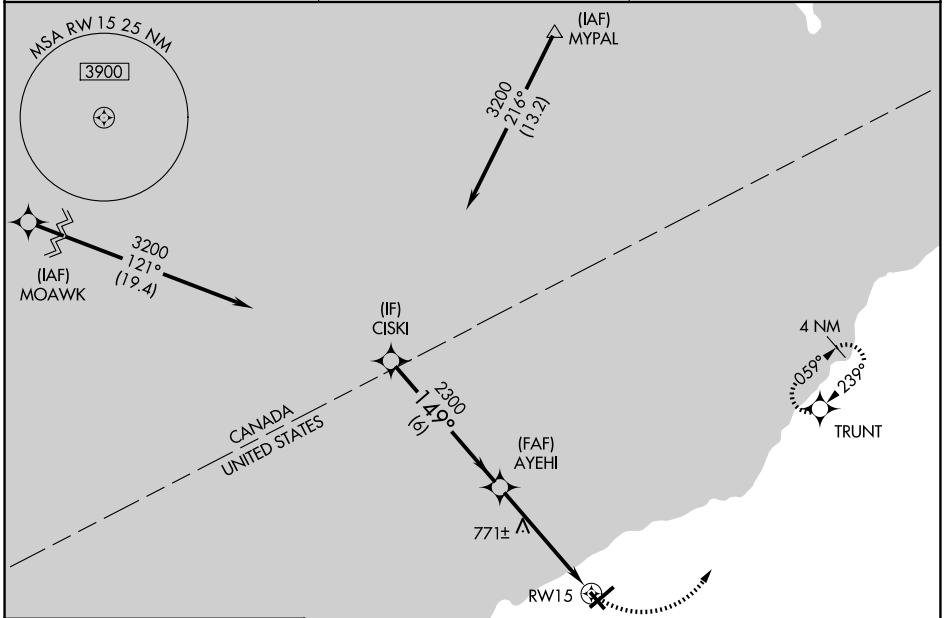
- Circling to Rwy 6, 24, 33 NA at night.
- Circling Cat D NA southeast of Rwy 6 and southwest of Rwy 33.
- Rwy 15 helicopter visibility reduction below 3/4 SM NA.

MISSED APPROACH: Climbing left turn to 3200 direct TRUNT and hold, continue climb-in-hold to 3200.

ASOS
119.275

BUFFALO APP CON
126.5 317.6

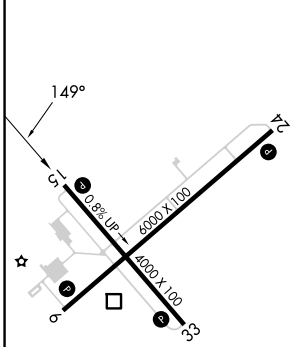
UNICOM
123.075 (CTAF) 0



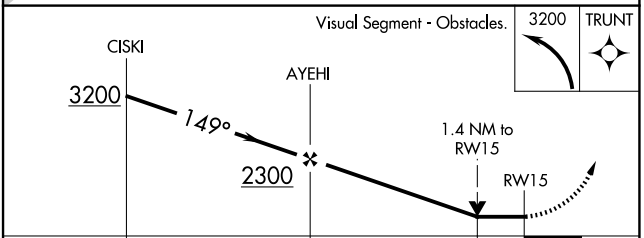
NE-2, 16 APR 2026 to 14 MAY 2026

NE-2, 16 APR 2026 to 14 MAY 2026

ELEV 692	TDZE 684
----------	----------



- MIRL Rwy 15-33
- REIL Rwy 6 and 24
- HIRL Rwy 6-24



CATEGORY	A	B	C	D
LNAV MDA	1140-1	456 (500-1)	1140-1 3/8	456 (500-1 3/8)
CIRCLING	1200-1 508 (600-1)	1320-1 628 (700-1)	1640-2 3/4 948 (1000-2 3/4)	2140-3 1448 (1500-3)