

APP CRS	Rwy Ldg	N/A
059°	TDZE	N/A
	Apt Elev	692

RNAV (GPS)-B

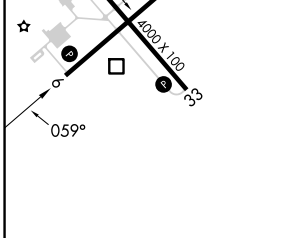
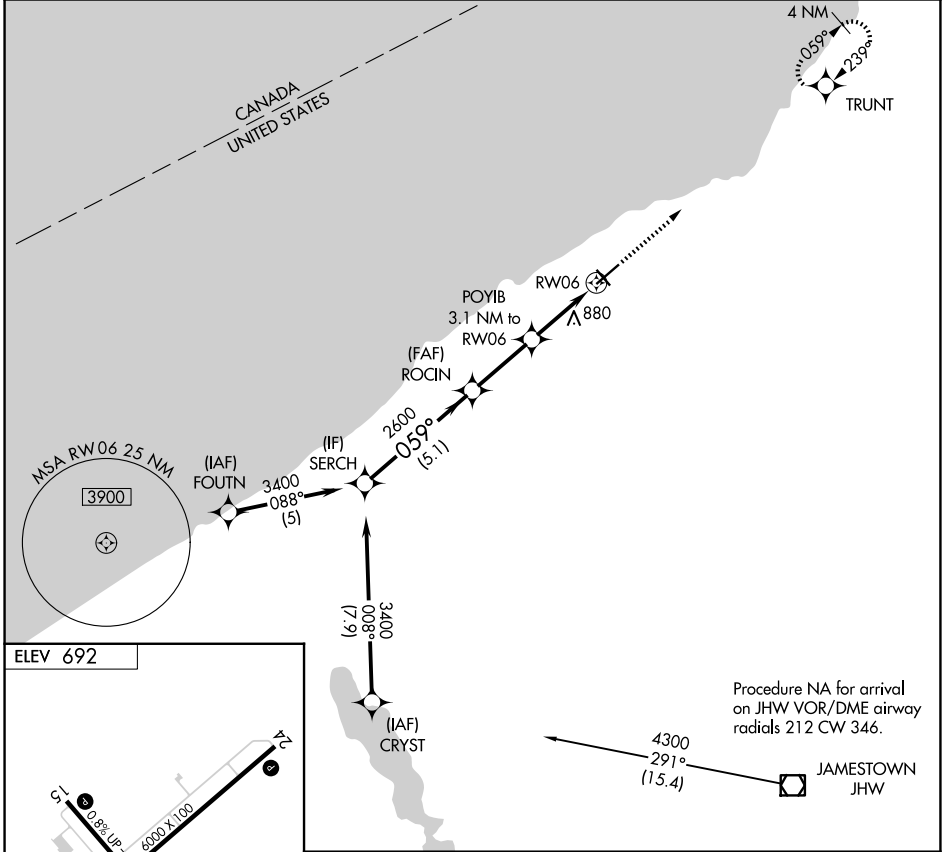
CHAUTAUGUA COUNTY/DUNKIRK (DKK)

RNP APCH:

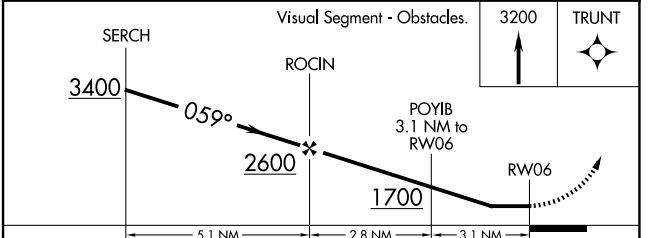
Circling to Rwy 6, 24, 33 NA at night.
 Circling Cat D NA southeast of Rwy 6 and southwest of Rwy 33.
 -21°C

MISSED APPROACH: Climb to 3200 direct TRUNT and hold.

ASOS 119.275	BUFFALO APP CON 126.5 317.6	UNICOM 123.075 (CTAF)
------------------------	---------------------------------------	---------------------------------



MIRL Rwy 15-33
 REIL Rwy 6 and 24
 HIRL Rwy 6-24



CATEGORY	A	B	C	D
CIRCLING	1200-1 508 (600-1)	1320-1 628 (700-1)	1640-2¾ 948 (1000-2¾)	2140-3 1448 (1500-3)

NE-2, 16 APR 2026 to 14 MAY 2026

NE-2, 16 APR 2026 to 14 MAY 2026