

COLEMAN, TEXAS

AL-881 (FAA)

24025

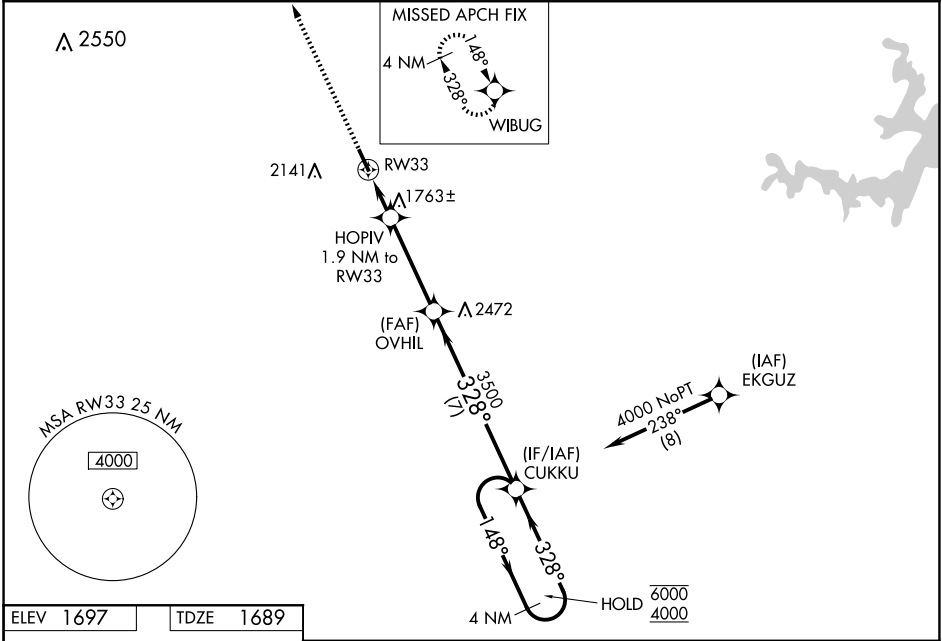
WAAS CH 82034 W33A	APP CRS 328°	Rwy Idg TDZE Apt Elev	4506 1689 1697
--	------------------------	-----------------------------	---

RNAV (GPS) RWY 33

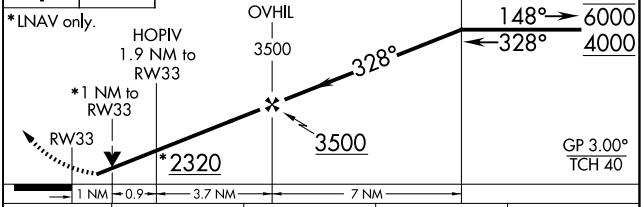
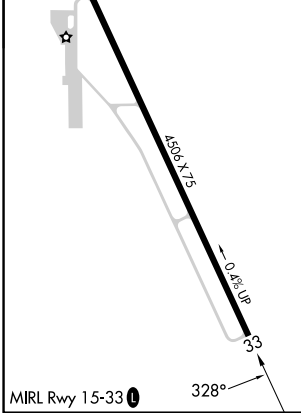
COLEMAN MUNI (COM)

RNP APCH.	MISSED APPROACH: Climb to 4000 direct WIBUG and hold.
-----------	---

AWOS-3PT 119.1	FORT WORTH CENTER 127.45 290.3	UNICOM 122.8 (CTAF) 0
--------------------------	--	---------------------------------



ELEV 1697	TDZE 1689	4000	WIBUG	CUKKU	4 NM Holding Pattern
-----------	-----------	------	-------	-------	----------------------



CATEGORY	A	B	C	D
LPV DA	1939-3/4	250 (300-3/4)		NA
LNAV/VNAV DA	1939-3/4	250 (300-3/4)		NA
LNAV MDA	2040-1	351 (400-1)		NA
CIRCLING	2300-1 603 (700-1)	2460-1 763 (800-1)	2460-2 1/4 763 (800-2 1/4)	NA

COLEMAN, TEXAS
Amdt 1 10OCT19

31°50'N-99°24'W

COLEMAN MUNI (COM)

RNAV (GPS) RWY 33

SC-3, 16 APR 2026 to 14 MAY 2026

SC-3, 16 APR 2026 to 14 MAY 2026