

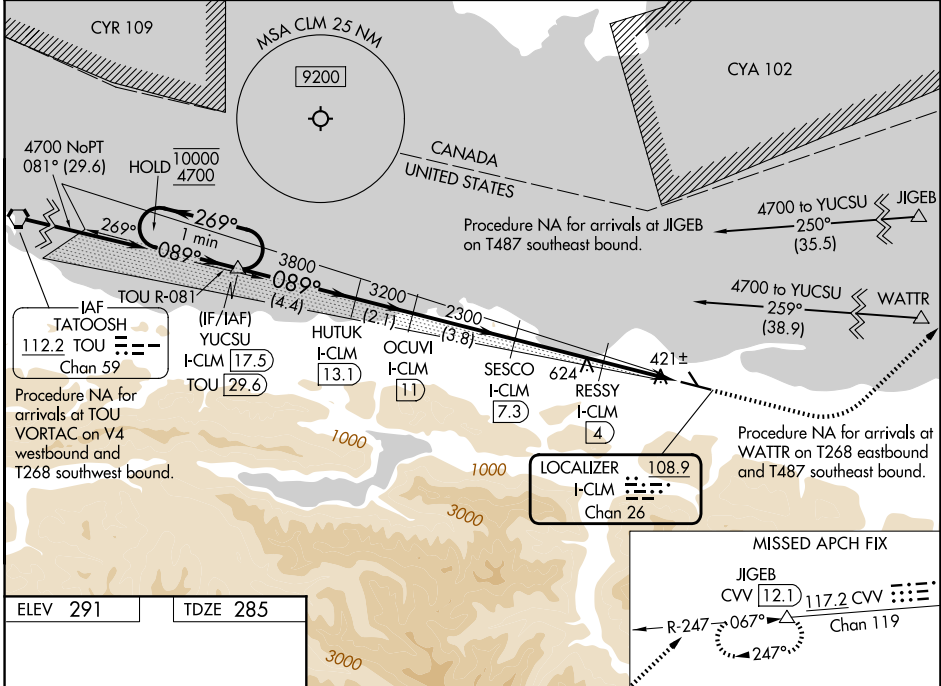
LOC/DME I-CLM 108.9 Chan 26	APP CRS 089°	Rwy Ldg TDZE 6347 285 Apt Elev 291
--	------------------------	---

ILS or LOC RWY 9

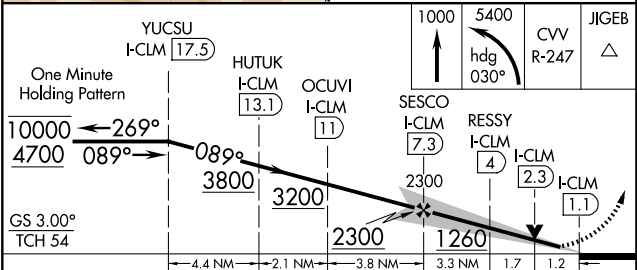
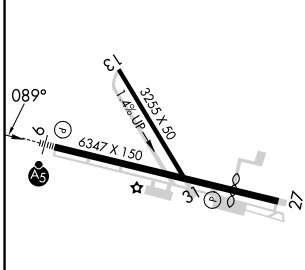
WILLIAM R FAIRCHILD INTL (CLM)

RNAV 1 - GPS. From JIGEB or WATTR.		MALSR 	MISSED APPROACH: Climb to 1000 then climbing left turn to 5400 on heading 030° and CVV VOR/DME R-247 to JIGEB/CVV 12.1 DME and hold, continue climb-in-hold to 5400.
DME required.			
Circling NA south of Rwy 9-27. Circling Rwy 13, 31 NA at night. For inop ALS, increase S-ILS 9 visibility to 7/8 SM.			

ASOS 135.175	WHIDBEY APP CON 118.2 285.65	CLNC DEL 124.15	UNICOM 122.975 (CTAF)
------------------------	--	---------------------------	---------------------------------



ELEV 291	TDZE 285
----------	----------



MIRL Rwy 9-27	REIL Rwy 27
FAF to MAP 6.2 NM	
Knots	60 90 120 150 180
Min:Sec	6:12 4:08 3:06 2:29 2:04
CATEGORY	A B C D
S-ILS 9	495-1/2 210 (300-1/2)
S-LOC 9	720-1/2 435 (500-1/2) 720-3/4 435 (500-3/4)
CIRCLING	800-1 509 (600-1) 800-1 1/2 509 (600-1 1/2) 1000-2 1/4 709 (800-2 1/4)

NW-1, 16 APR 2026 to 14 MAY 2026

NW-1, 16 APR 2026 to 14 MAY 2026