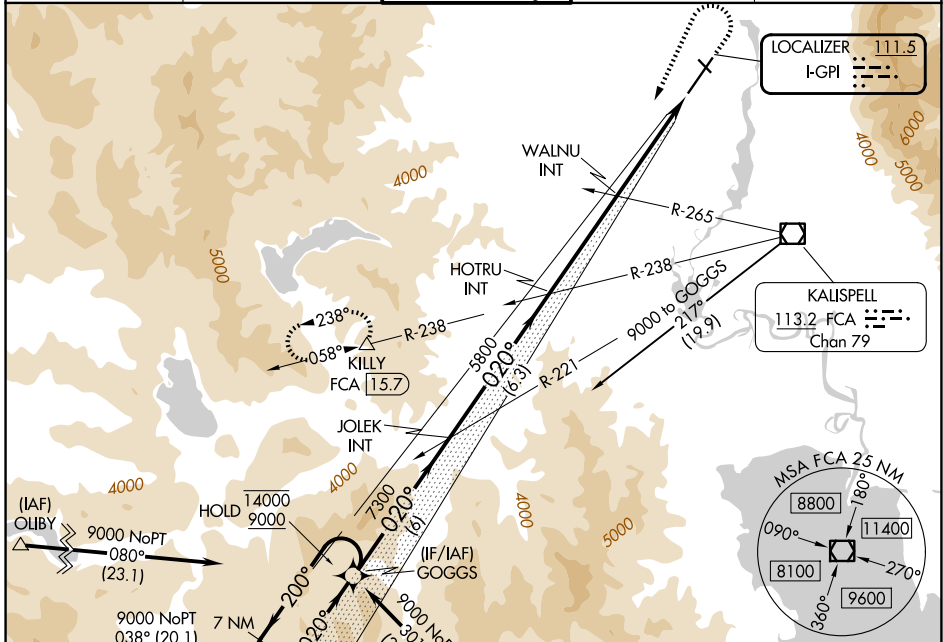


LOC I-GPI <b>111.5</b>	APP CRS <b>020°</b>	Rwy Ldg TDZE Apt Elev <b>9007</b> <b>2966</b> <b>2977</b>
---------------------------	------------------------	--

# ILS or LOC RWY 2

GLACIER PARK INTL (GPI)

DME required. RNAV 1-GPS or RADAR required for procedure entry.		MALSR	MISSED APPROACH: Climb to 4100 then climbing left turn to 12000 on heading 190° and FCA VOR/DME R-238 to KILLY/15.7 DME and hold, continue climb-in-hold to 12000.	
Inop table does not apply to S-LOC 2 Cats C/D. -14°C				
ATIS <b>132.625</b>	SALT LAKE CENTER <b>127.075 244.875</b>	GLACIER TOWER* <b>124.55 (CTAF)</b>	GND CON <b>121.6</b>	UNICOM <b>122.95</b>



NW-1, 16 APR 2026 to 14 MAY 2026

NW-1, 16 APR 2026 to 14 MAY 2026

7 NM Holding Pattern		GOGGS		JOLEK INT		HOTRU INT		WALNU INT		KILLY	
14000 ← 200°		9000 → 020°		7300		5800		4100		12000	
GS 3.00°		TCH 51		*4440		*LOC only		FCA R-238		hdg 190°	
6 NM		6.3 NM		4.3 NM		4.5 NM					
CATEGORY	A	B	C	D							
S-ILS 2	3166-1/2				200 (200-1/2)						
S-LOC 2	4440-3/4		4440-1		4440-3		1474 (1500-3)				
CIRCLING	4440-1 1/4		4440-1 1/2		4440-3		1463 (1500-3)				
WALNU FIX MINIMUMS (DUAL VOR RECEIVERS REQUIRED)											
S-LOC 2	3520-1/2		554 (600-1/2)		3520-1 1/8		554 (600-1 1/8)				
CIRCLING	3520-1		3580-1		3680-2		3760-2 1/2				
	543 (600-1)		603 (700-1)		703 (800-2)		783 (800-2 1/2)				

ELEV 2977	TDZE 2966
TWR MIRL Rwy 12-30 HIRL Rwy 2-20	
REIL Rwy 20 FAF to MAP 8.8 NM	
Knots	60 90 120 150 180
Min:Sec	8:48 5:52 4:24 3:31 2:56