

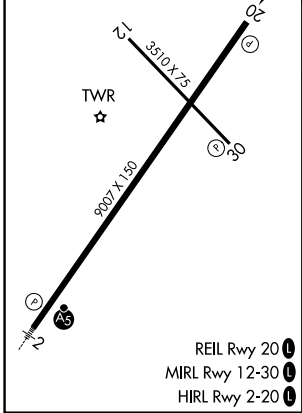
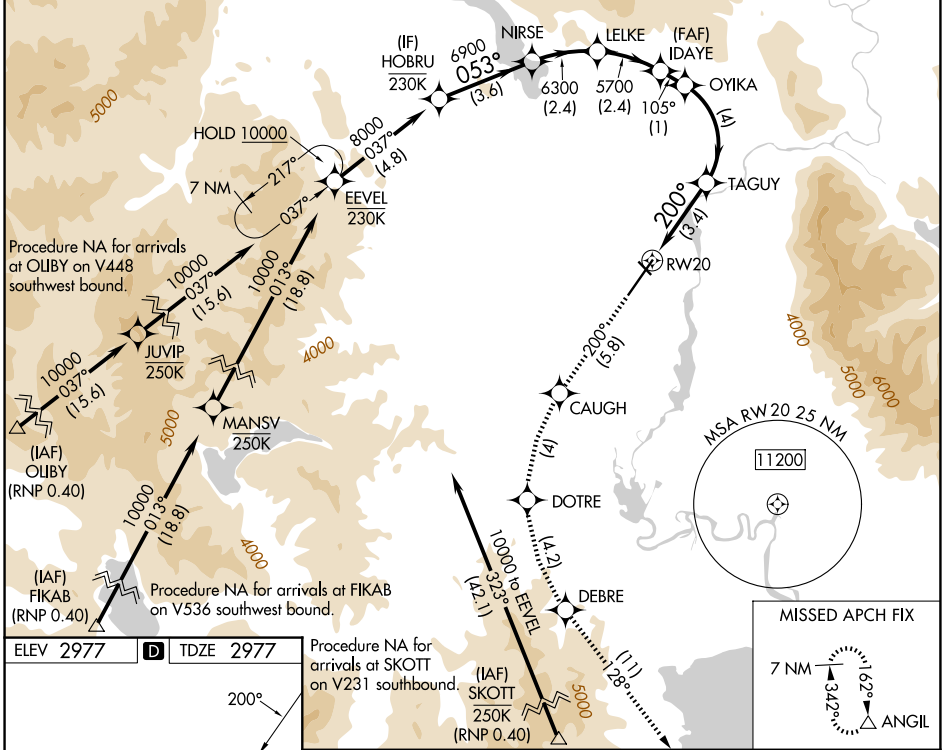
APP CRS	Rwy Ldg	9007
200°	TDZE	2977
	Apt Elev	2977

RNAV (RNP) RWY 20

GLACIER PARK INTL (GPI)

RNP AR APCH - GPS.	MISSED APPROACH: Climb to 10000 on track 200° to CAUGH, left turn to DOTRE, left turn to DEBRE, and on track 128° to ANGL and hold, continue climb-in-hold to 10000. *Missed approach requires minimum climb of 230 feet per NM to 6800.
-14°C For uncompensated Baro-VNAV systems, procedure NA below -25°C or above 54°C.	

ATIS 132.625	SALT LAKE CENTER 127.075 244.875	GLACIER TOWER* 124.55 (CTAF) 0	GND CON 121.6	UNICOM 122.95
------------------------	--------------------------------------------	------------------------------------------	-------------------------	-------------------------



ELEV 2977	TDZE 2977	Procedure NA for arrivals at SKOTT on V231 southbound.		MISSED APCH FIX	
10000	CAUGH	DOTRE	DEBRE	tr 128°	ANGIL
tr 200°					
HOBRU	TAGUY	OYIKA	IDAYE	LELKE	NIRSE
	4100	5377	5700	6300	6900
	200°	105°	5700	053°	8000
	3.4 NM	4 NM	1 NM	2.4 NM	2.4 NM
	3.6 NM				
					GP 3.00°
					TCH 45
CATEGORY	A	B	C	D	
RNP 0.10 DA*	3346-1		369 (400-1)		
RNP 0.30 DA*	3418-1 3/8		441 (500-1 3/8)		
RNP 0.30 DA	3637-1 7/8		660 (700-1 7/8)		

AUTHORIZATION REQUIRED

NW-1, 16 APR 2026 to 14 MAY 2026

NW-1, 16 APR 2026 to 14 MAY 2026