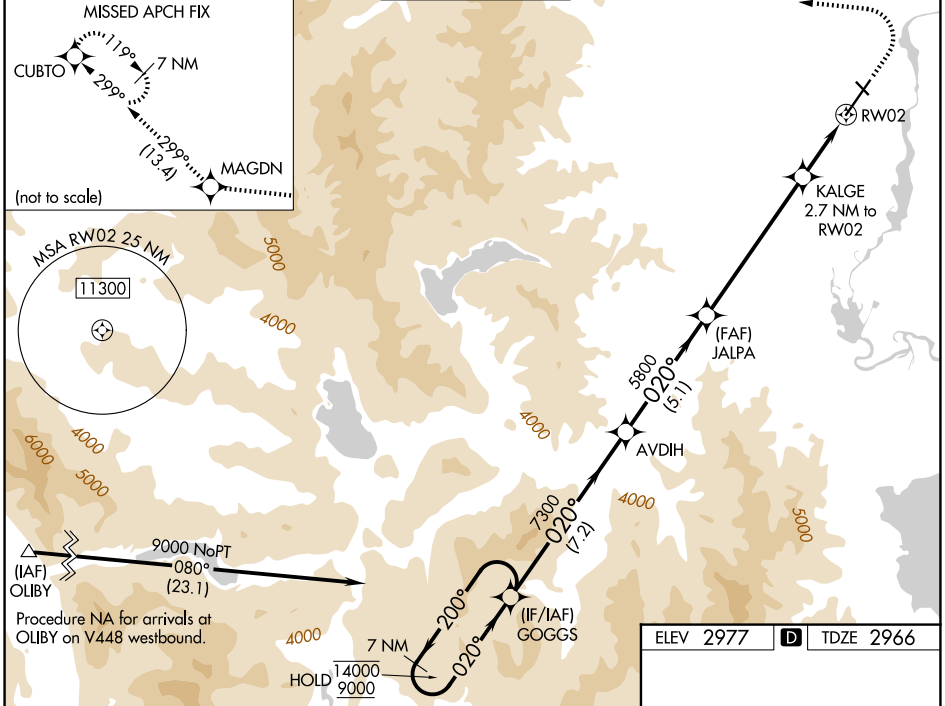


WAAS CH <b>70799</b> <b>W02A</b>	APP CRS <b>020°</b>	Rwy Ldg <b>9007</b> TDZE <b>2966</b> Apr Elev <b>2977</b>
--	------------------------	---

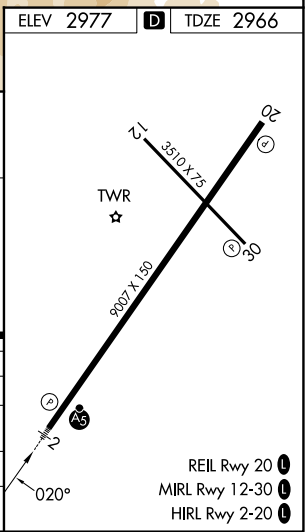
# RNAV (GPS) Z RWY 2

GLACIER PARK INTL (GPI)

RNP APCH - GPS.		MALSR 	MISSED APPROACH: (Do not exceed 185K until CUBTO) Climb to 4200 then climbing left turn 9200 direct MAGDN and on track 299° to CUBTO and hold, continue climb-in-hold to 9200.		
For uncompensated Baro-VNAV systems, LNAV/VNAV NA below -24°C or above 54°C. For inop ALS, increase LNAV/VNAV all Cats visibility, and LNAV Cts C and D visibility to 1 3/8 SM. -1.4°C					
ATIS <b>132.625</b>	SALT LAKE CENTER <b>127.075 244.875</b>	GLACIER TOWER ★ <b>124.55 (CTAF)</b>	GND CON <b>121.6</b>	UNICOM <b>122.95</b>	



7 NM Holding Pattern	GOGGS	AVDIH	JALPA	KALGE	RWY 2
14000 ← 200°	9000 → 020°	7300	5800	3880	
GP 3.00°	TCH 51				
	7.2 NM	5.1 NM	6 NM	1.4 NM	1.3 NM
CATEGORY	A	B	C	D	
LPV DA		3166-1/2	200 (200-1/2)		
LNAV/VNAV DA		3468-1	502 (500-1)		
LNAV MDA	3440-1/2	474 (500-1/2)	3440-1	474 (500-1)	
CIRCLING	3480-1 503 (600-1)	3580-1 603 (700-1)	3680-2 703 (800-2)	3760-2 1/2 783 (800-2 1/2)	



NW-1, 16 APR 2026 to 14 MAY 2026

NW-1, 16 APR 2026 to 14 MAY 2026

- REIL Rwy 20 ①
- MIRL Rwy 12-30 ①
- HIRL Rwy 2-20 ①