

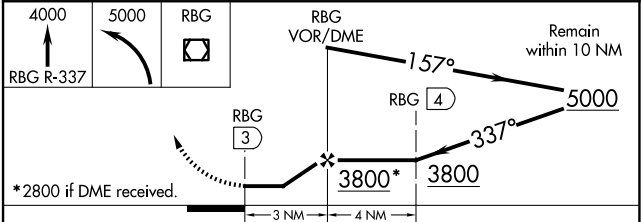
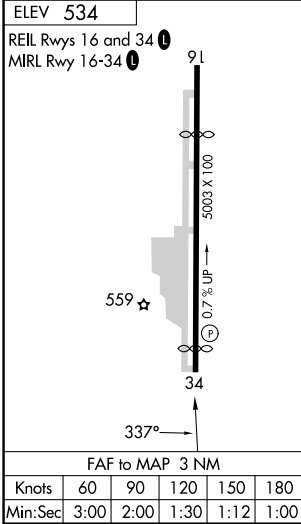
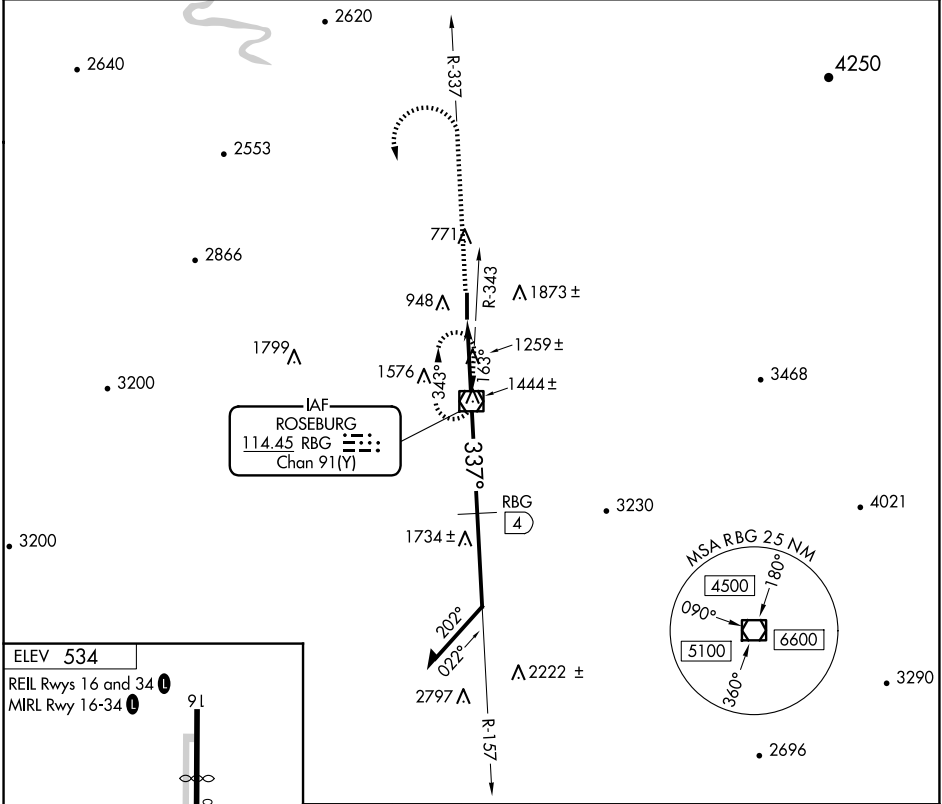
VOR/DME RBG <b>114.45</b> Chan <b>91(Y)</b>	APP CRS <b>337°</b>	Rwy Ldg TDZE Apt Elev <b>534</b>	<b>N/A</b> <b>N/A</b> <b>534</b>
---	------------------------	--	--

**VOR-A**  
ROSEBURG RGNL (R.B.G)

**▼** Circling not authorized east of Rwy 16-34.  
**▲ NA** Procedure NA at night.  
Rwy 34 helicopter visibility reduction below 1 SM NA.

MISSED APPROACH: Climb to 4000 on RBG VOR/DME R-337 within 1.5 NM; then climbing left turn to 5000 direct RBG VOR/DME and hold.

ASOS <b>135.475</b>	SEATTLE CENTER <b>127.55 239.0</b>	UNICOM <b>122.8 (CTAF)</b>
------------------------	---------------------------------------	-------------------------------



CATEGORY	A	B	C	D
CIRCLING	2600-1¼ 2066 (2100-1¼)	2600-1½ 2066 (2100-1½)	2600-3	2066 (2100-3)
DME MINIMUMS				
CIRCLING	1740-1¼ 1206 (1300-1¼)	1740-1½ 1206 (1300-1½)	2020-3 1486 (1500-3)	2100-3 1566 (1600-3)

NW-1, 16 APR 2026 to 14 MAY 2026

NW-1, 16 APR 2026 to 14 MAY 2026