

# ILS or LOC RWY 19

TETERBORO (TEB)

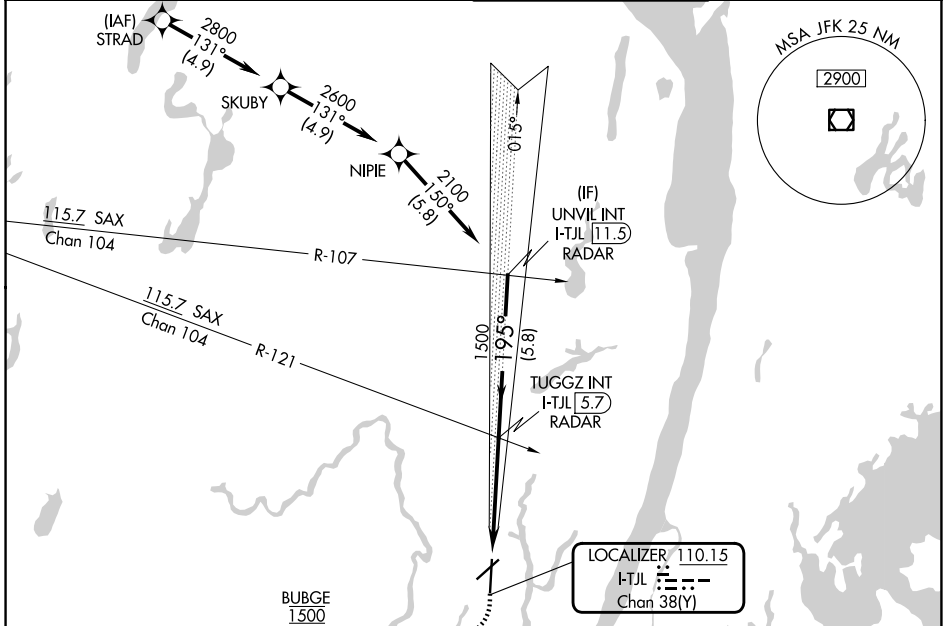
LOC/DME I-TJL <b>110.15</b> Chan <b>38</b> (Y)	APP CRS <b>195°</b>	Rwy Ldg TDZE Apt Elev	<b>6230</b> <b>6</b> <b>8</b>
--	------------------------	-----------------------------	-------------------------------------

RNP APCH - GPS. RADAR required.

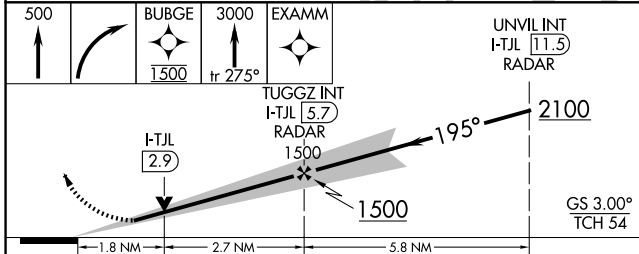
⚠ Circling NA for Cats B, C, D northwest of Rwy 6-19. When Circling to Rwy 24 at night, operational VGSI required, remain on or above the VGSI glidepath until threshold.

⚠ MISSED APPROACH: Climb to 500 then climbing right turn direct BUBGE, cross BUBGE at 1500, then climb to 3000 on track 275° to EXAMM and hold, continue climb-in-hold to 3000.

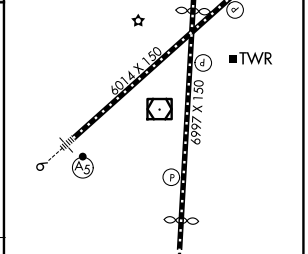
D-ATIS <b>114.2 132.85</b>	NEWARK APP CON <b>127.6 379.9</b>	TETERBORO TOWER <b>119.5</b>	GND CON <b>121.9</b>
-------------------------------	--------------------------------------	---------------------------------	-------------------------



500	BUBGE 1500	3000	EXAMM	UNVIL INT I-TJL 11.5 RADAR
↑	↻	↑	↻	
	fr 275°			



ELEV 8	<b>D</b>	TDZE 6
--------	----------	--------



CATEGORY	A	B	C	D
S-ILS 19		241-3/4	235 (300-3/4)	
S-LOC 19	640-1	634 (700-1)	640-1 3/4	634 (700-1 3/4)
CIRCLING	760-1	752 (800-1)	820-2 1/2	1040-3
			812 (900-2 1/2)	1032 (1100-3)

TDZL/RCLS Rwys 6 and 19	
REIL Rwys 1, 6, 19 and 24	
HIRL Rwys 1-19 and 6-24	
FAF to MAP 4.5 NM	
Knots	60 90 120 150 180
Min:Sec	4:30 3:00 2:15 1:48 1:30

NE-2, 16 APR 2026 to 14 MAY 2026

NE-2, 16 APR 2026 to 14 MAY 2026