

LOC/DME I-TEB	APP CRS	Rwy Ldg	<b>6014</b>
<b>111.75</b>	<b>060°</b>	TDZE	<b>5</b>
Chan <b>54(Y)</b>		Apt Elev	<b>8</b>

# ILS Z or LOC Z RWY 6

TETERBORO (TEB)

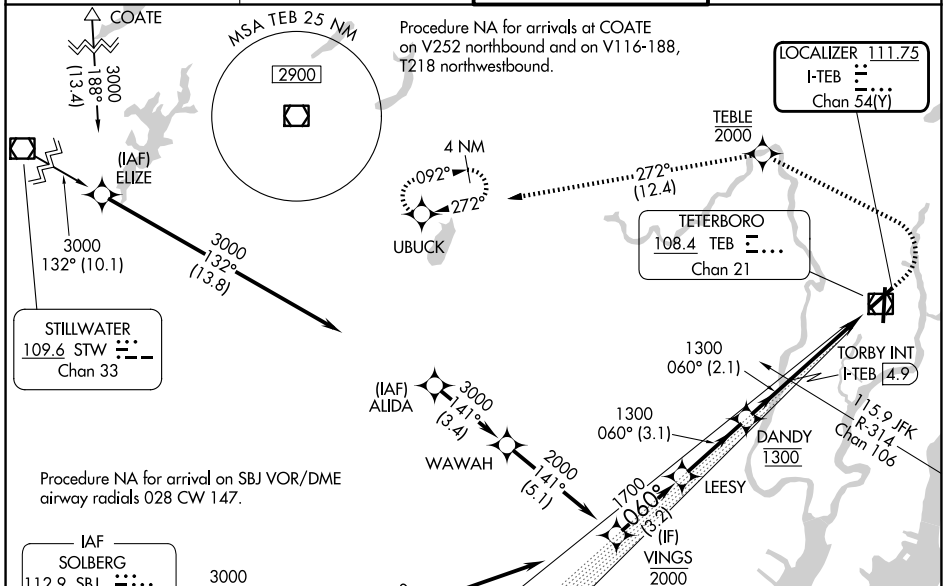
RNP APCH - GPS.

RADAR required.

▼ Rwy 6 helicopter visibility reduction below RVR 4000 NA. Circling NA for Cats B, C and D northwest of Rwy 6 and west of Rwy 19. Inop table does not apply to S-ILS-6 all Cats.  
 ▲ D northwest of Rwy 24 at night, operational VGS1 required, remain on or above VGS1 glidepath until threshold. For inop ALS, increase S-LOC 6 Cats A/B visibility to RVR 5500.

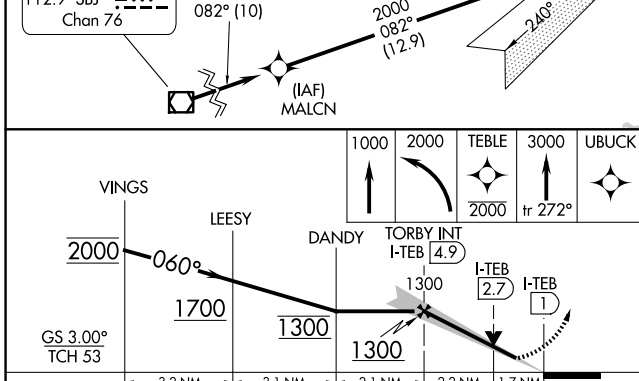
MALSRS MISSED APPROACH: Climb to 1000, then climbing left turn to 2000 direct TEBLE, cross TEBLE at or below 2000, then climb to 3000 on track 272° to UBUCK and hold.

D-ATIS <b>114.2 132.85</b>	NEWARK APP CON <b>127.6 379.9</b>	TETERBORO TOWER <b>119.5</b>	GND CON <b>121.9</b>
-------------------------------	--------------------------------------	---------------------------------	-------------------------

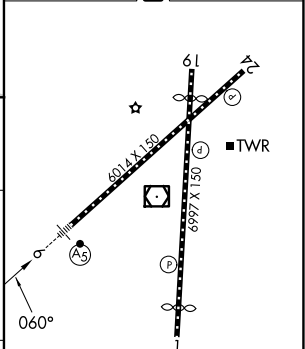


NE-2, 16 APR 2026 to 14 MAY 2026

NE-2, 16 APR 2026 to 14 MAY 2026



ELEV 8	D	TDZE 5
--------	---	--------



CATEGORY	A	B	C	D
S-ILS 6	255/40		250 (300-¾)	
S-LOC 6	600/40	595 (600-¾)	600-1¼	595 (600-1¼)
CIRCLING	760-1	752 (800-1)	820-2½ 812 (900-2½)	1040-3 1032 (1100-3)

TDZL/RCLS Rws 6 and 19					
REIL Rws 1, 6, 19 and 24					
HIRL Rws 1-19 and 6-24					
FAF to MAP 3.9 NM					
Knots	60	90	120	150	180
Min:Sec	3:54	2:36	1:57	1:34	1:18