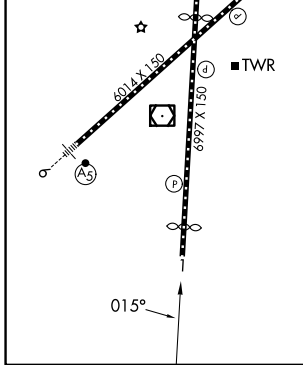
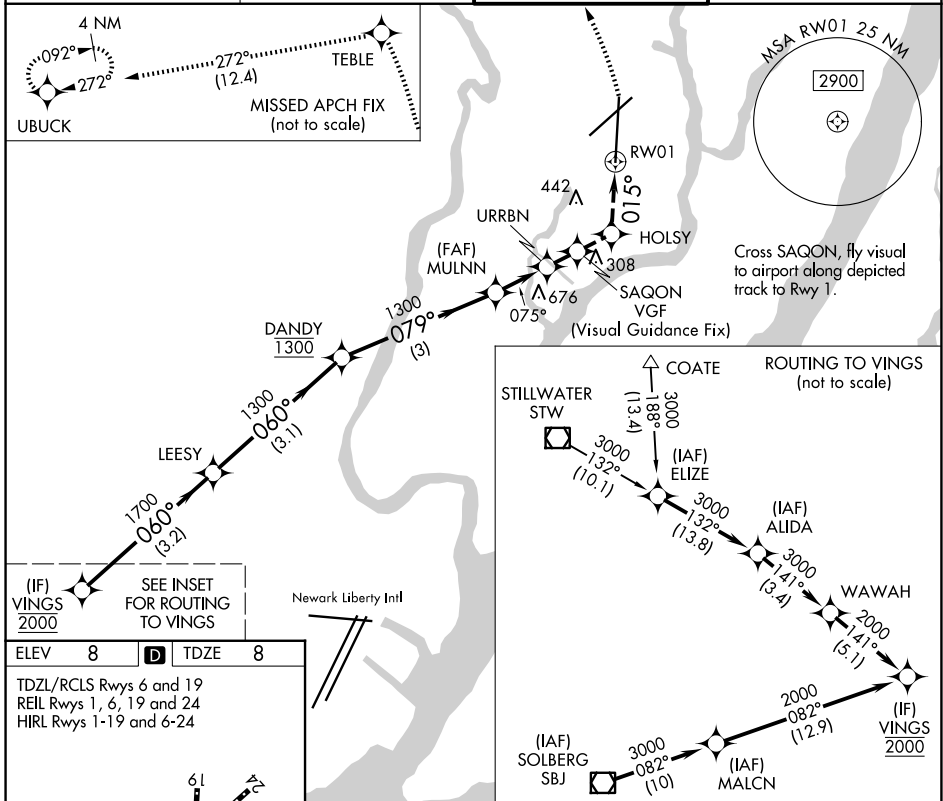


APP CRS	Rwy Ldg	<b>6159</b>
<b>015°</b>	TDZE	<b>8</b>
	Apt Elev	<b>8</b>

# RNAV (GPS) RWY 1

TETERBORO (TEB)

RNP APCH - GPS. RADAR required.		MISSED APPROACH: Climb to 1300 on the FMS lateral path to Rwy 1 then climbing left turn to at or below 2000 direct TEBLE then climbing left turn to 3000 on track 272° to UBUCK and hold.	
▼ Inop table does not apply. ▲ Rwy 1 helicopter visibility reduction NA.			
D-ATIS <b>114.2 132.85</b>	NEWARK APP CON <b>127.6 379.9</b>	TETERBORO TOWER <b>119.5</b>	GND CON <b>121.9</b>



Turns required in the visual segment.	1300 FMS Lateral to RW01	2000	TEBLE	3000	UBUCK		
	↑	↙	⊙	↘	⊙		
			tr 272°				
	* Recommended altitude.						
VINGS	LEESY	DANDY	MULNN	URRBN	SAQON	HOLSY	RW01
2000	1700	1300	1300	1300	760	534	
	060°	079°	075°	075°	076°	076°	
			3.10° TCH 56				
			960				
	← 3.2 NM	← 3.1 NM	← 3 NM	← 1 NM	← 0.6	← 0.7	← 1.4 NM
CATEGORY	A		B		C		D
LNAV MDA	760-2½		752 (800-2½)		760-3		752 (800-3)

NE-2, 16 APR 2026 to 14 MAY 2026

NE-2, 16 APR 2026 to 14 MAY 2026