

# RNAV (RNP) Z RWY 19

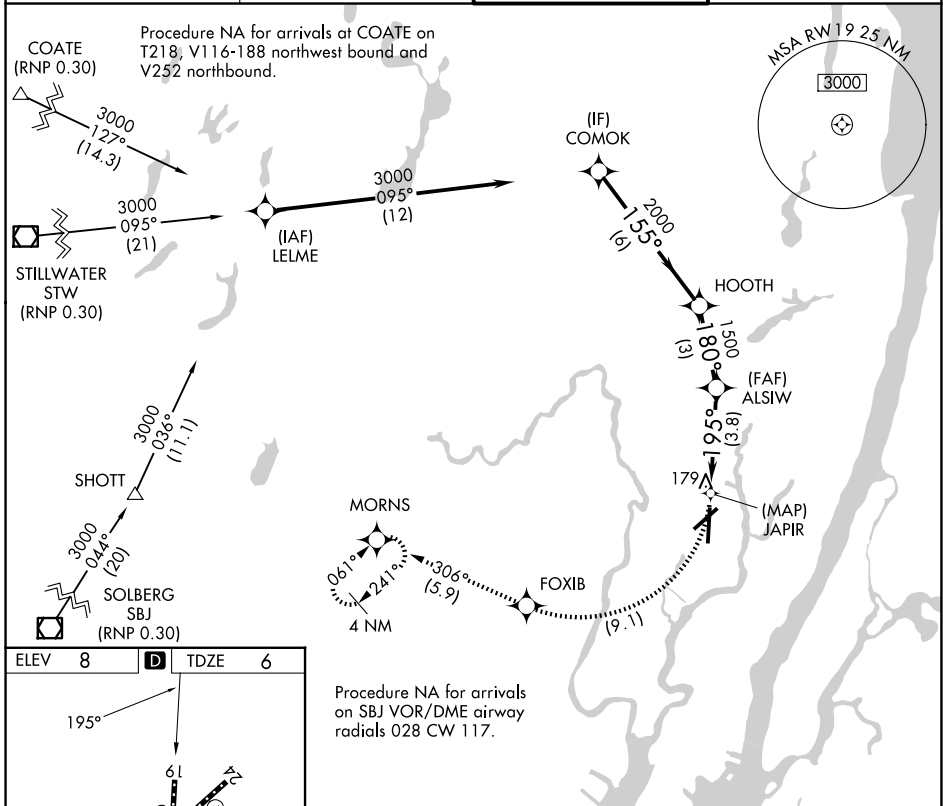
TEREBORO (TEB)

APP CRS	Rwy Ldg	<b>6230</b>
<b>195°</b>	TDZE	<b>6</b>
	Apt Elev	<b>8</b>

**▼** For uncompensated Baro-VNAV systems, procedure NA below -13°C (8°F) or above 54°C (130°F). RF required. GPS required.  
**▲ NA** Missed approach requires RNP less than 1.0.

MISSED APPROACH: Climb to 1500 via right turn to FOXIB, then climb to 3000 on track 306° to MORNS and hold.

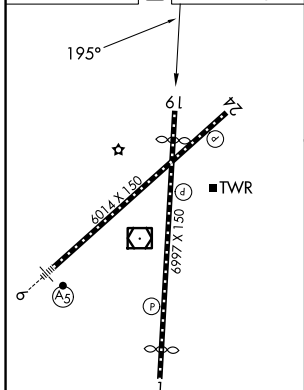
D-ATIS <b>114.2 132.85</b>	NEWARK APP CON <b>127.6 379.9</b>	TEREBORO TOWER <b>119.5</b>	GND CON <b>121.9</b>
-------------------------------	--------------------------------------	--------------------------------	-------------------------



NE-2, 16 APR 2026 to 14 MAY 2026

NE-2, 16 APR 2026 to 14 MAY 2026

ELEV 8	<b>D</b>	TDZE 6
--------	----------	--------



TDZL/RCLS Rws 6 and 19  
 REIL Rws 1, 6, 19 and 24  
 HIRL Rws 1-19 and 6-24

1500	FOXIB	3000	MORNS	
↙		↑ tr 306°		↘
JAPIR		ALSIW	HOOOTH	COMOK
↙ 195°		1500	↘ 180°	↘ 155° 3000
↘ 1500				GP 3.00° TCH 54
0.7		3.8 NM		3 NM
3 NM		6 NM		
CATEGORY	A		B	C
RNP 0.10 DA	499-1¾		493 (500-1¾)	

**AUTHORIZATION REQUIRED**