

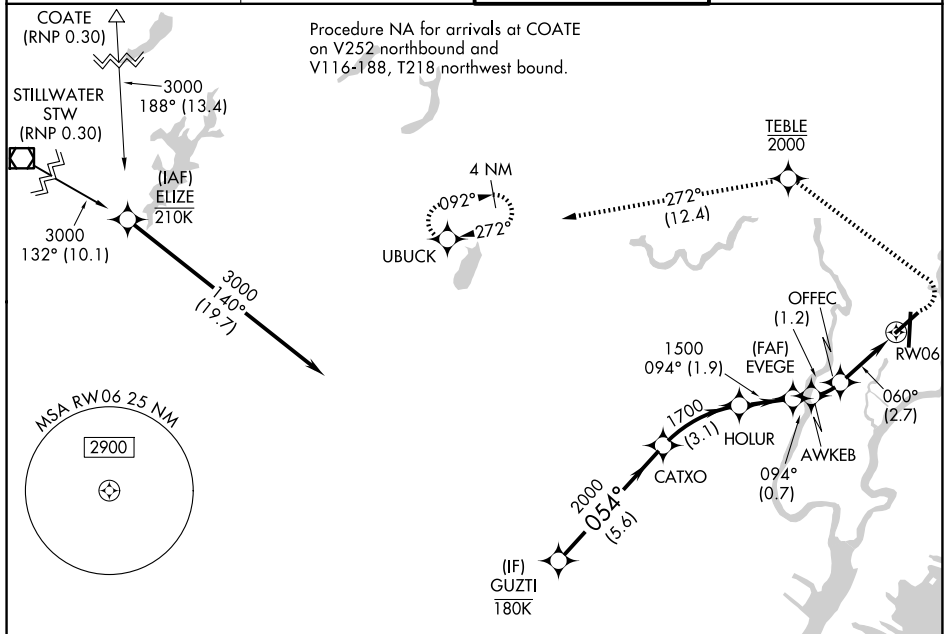
APP CRS	Rwy Ldg	6014
060°	TDZE	6
	Apt Elev	8

RNAV (RNP) Z RWY 6

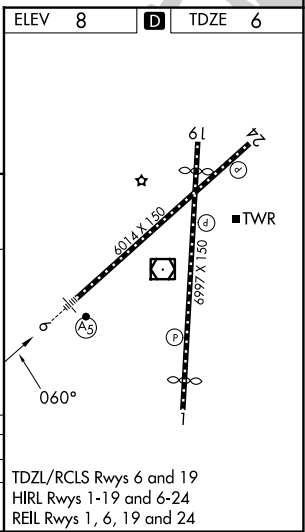
TETERBORO (TEB)

RNP AR APCH - GPS. RADAR required.	MALSR	MISSED APPROACH: Climb to 1000, then climbing left turn to 2000 direct TEBLE, cross TEBLE at or below 2000, then climb to 3000 on track 272° to UBUCK and hold.
▼ For uncompensated Baro-VNAV systems, procedure NA below -13°C or above 54°C. For inop ALS, increase RNP 0.30 all Cats visibility to 1½ SM.		

D-ATIS 114.2 132.85	NEWARK APP CON 127.6 379.9	TETERBORO TOWER 119.5	GND CON 121.9
-------------------------------	--------------------------------------	---------------------------------	-------------------------



(IAF) SOLBERG SBJ (RNP 0.30)	3000 080° (20)	Procedure NA for arrival on SBJ VOR/DME airway radials 028 CW 147.					
GUZTI	CATXO	HOLUR	1000	2000	TEBLE	3000	UBUCK
3000	2000	1700	1500	1290	923	RW06	
GP 3.00° TCH 53	054°	094°	060°				
	5.6 NM	3.1 NM	1.9 NM	0.7 NM	1.2 NM	2.7 NM	
CATEGORY	A	B	C	D			
RNP 0.30 DA		679-1½	673 (700-1½)				



NE-2, 16 APR 2026 to 14 MAY 2026

NE-2, 16 APR 2026 to 14 MAY 2026

TDZL/RCLS Rwy 6 and 19
HIRL Rwy 1-19 and 6-24
REIL Rwy 1, 6, 19 and 24