

WAAS CH 97736 W19A	APP CRS 195°	Rwy Ldg TDZE Apt Elev	6230 6 8
--	------------------------	-----------------------------	-------------------------------------

RNAV (GPS) Y RWY 19

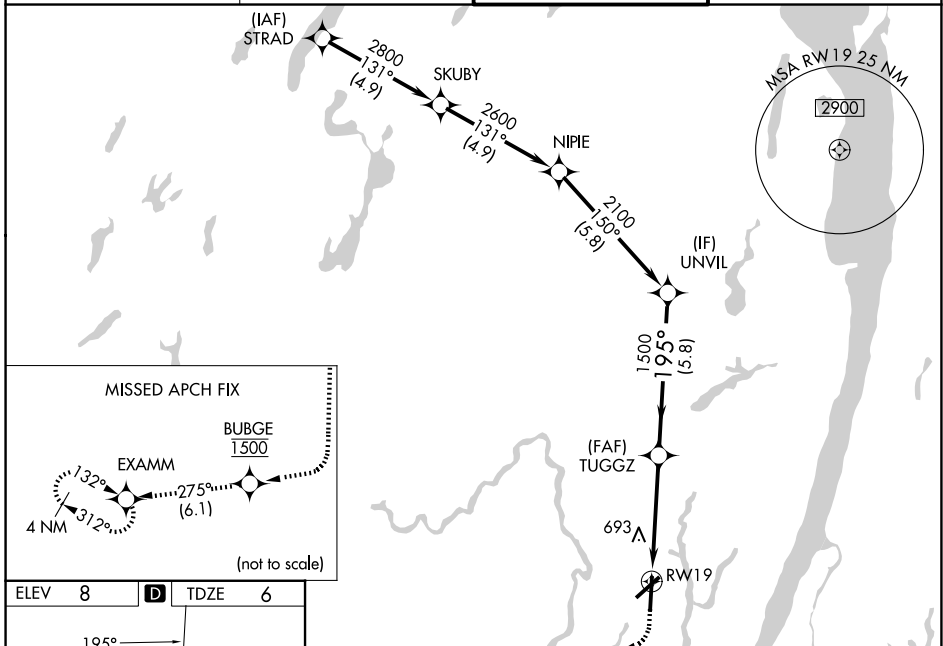
TETERBORO (TEB)

RNP APCH - GPS. RADAR required.

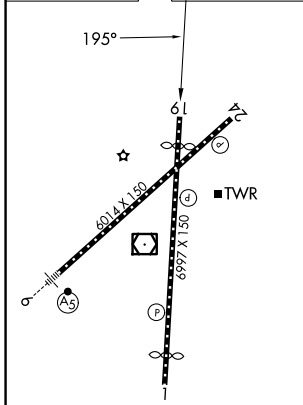
⚠ Circling NA for Cats B, C, D northwest of Rwy 6-19. For uncompensated Baro-VNAV systems, LNAV/VNAV NA below -13°C or above 54°C. When Circling to Rwy 24 at night, operational VGSI required, remain on or above the VGSI glidepath until threshold.

MISSED APPROACH: Climb to 500 then climbing right turn direct BUBGE, cross BUBGE at 1500, then climb to 3000 on track 275° to EXAMM and hold, continue climb-in-hold to 3000.

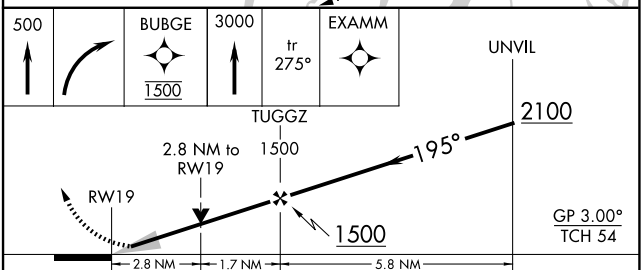
D-ATIS 114.2 132.85	NEWARK APP CON 127.6 379.9	TETERBORO TOWER 119.5	GND CON 121.9
-------------------------------	--------------------------------------	---------------------------------	-------------------------



ELEV 8	D	TDZE 6
--------	----------	--------



TDZL/RCLS Rws 6 and 19
REIL Rws 1, 6, 19 and 24
HIRL Rws 1-19 and 6-24



CATEGORY	A	B	C	D
LPV DA		241-3/4	235 (300-3/4)	
LNAV/VNAV DA		1096-4	1090 (1100-4)	
LNAV MDA	960-1 1/4 954 (1000-1 1/4)	960-1 1/2 954 (1000-1 1/2)	960-3	954 (1000-3)
CIRCLING	960-1 1/4 952 (1000-1 1/4)	960-1 1/2 952 (1000-1 1/2)	960-3 952 (1000-3)	1040-3 1032 (1100-3)

NE-2, 16 APR 2026 to 14 MAY 2026

NE-2, 16 APR 2026 to 14 MAY 2026