

WAAS CH <b>53723</b> <b>W10A</b>	APP CRS <b>101°</b>	Rwy Idg TDZE Apt Elev	<b>6003</b> <b>74</b> <b>85</b>
--	------------------------	-----------------------------	---------------------------------------

# RNAV (GPS) RWY 10

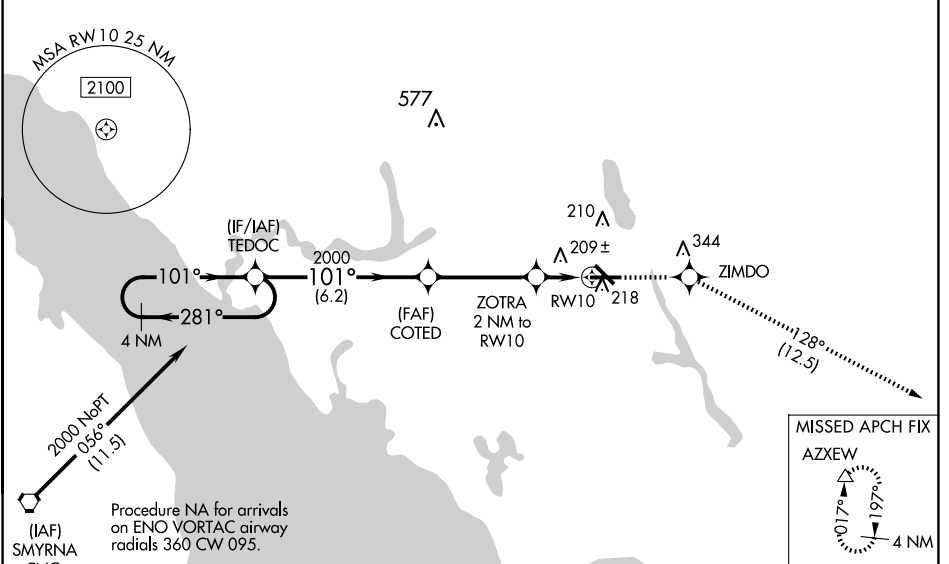
MILLVILLE MUNI (MIV)

RNP APCH-GPS.

▼ For uncompensated Baro-VNAV systems, LNAV/VNAV NA below -15°C or above 54°C. When local altimeter setting not received, use Atlantic City altimeter setting; increase LPV DA to 330 feet; LNAV/VNAV DA to 571 feet and visibility ¼ SM; increase all MDAs 60 feet and visibility Cat C and D ½ SM. Baro-VNAV and VDP NA when using Atlantic City altimeter setting. For inop MALSRS when using Atlantic City altimeter setting, increase LNAV/VNAV all Cat visibility to 1⅝.

MALSRS MISSED APPROACH: Climb to 2000 direct ZIMDO and on track 128° to AZXEW and hold.

ASOS <b>119.6</b>	ATLANTIC CITY APP CON <b>124.6 327-125</b>	UNICOM <b>123.0 (CTAF) 0</b>
----------------------	---	---------------------------------



NE-2, 16 APR 2026 to 14 MAY 2026

NE-2, 16 APR 2026 to 14 MAY 2026

ELEV 85		TDZE 74	
4 NM Holding Pattern		TEDOC	COTED
		ZOTRA 2 NM to RW10	RW10
GP 3.00° TCH 52		ZIMDO	AZXEW
CATEGORY	A	B	C
LPV DA	274-½		200 (200-½)
LNAV/VNAV DA	515-1		441 (500-1)
LNAV MDA	460-½	386 (400-½)	460-⅝ 386 (400-⅝)
CIRCLING	520-1 435 (500-1)	580-1 495 (500-1)	660-1½ 575 (600-1½)    660-2 575 (600-2)

MIRL Rwy 10-28 and 14-32 0