

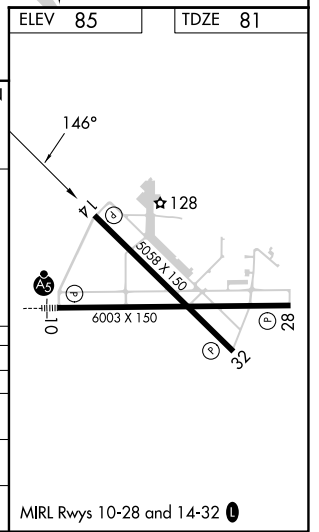
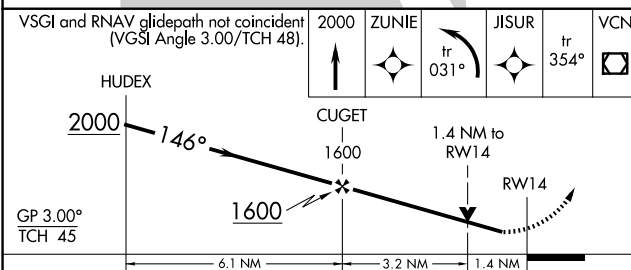
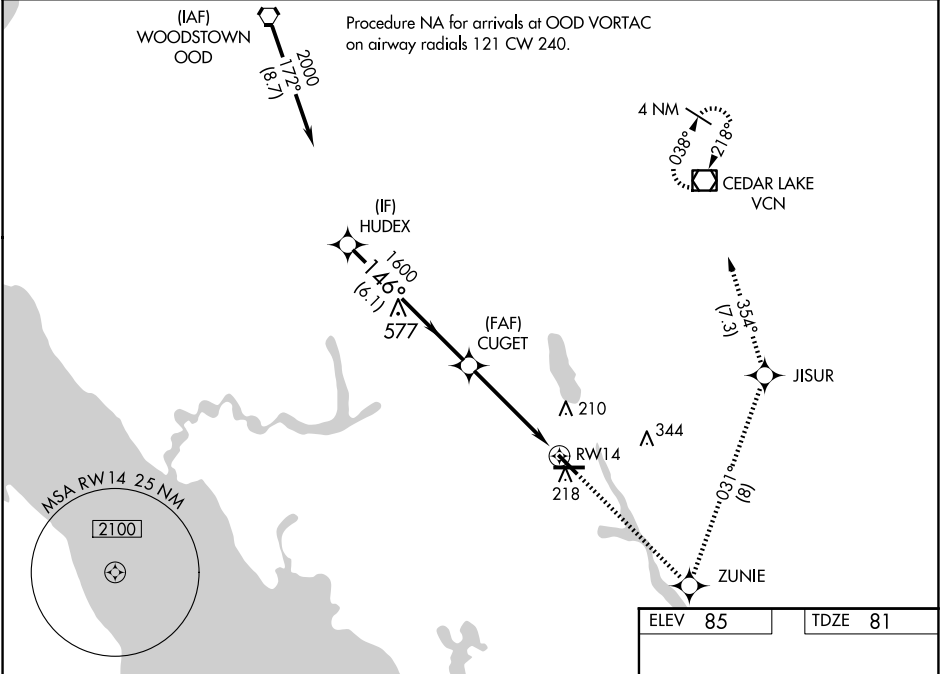
WAAS CH 82000 W14A	APP CRS 146°	Rwy Idg TDZE Apt Elev	5058 81 85
--	------------------------	-----------------------------	---------------------------------------

RNAV (GPS) RWY 14

MILLVILLE MUNI (MIV)

RNP APCH-GPS.	MISSED APPROACH: Climb to 2000 direct ZUNIE and left turn on track 031° to JISUR and on track 354° to VCN VOR/DME and hold.
▼ Rwy 14 helicopter visibility reduction below 3/4 SM NA. For uncompensated Baro-VNAV systems, LNAV/VNAV NA below -15°C or above 54°C.	

ASOS 119.6	ATLANTIC CITY APP CON 124.6 327.125	UNICOM 123.0 (CTAF) 0
----------------------	---	---------------------------------



CATEGORY	A	B	C	D
LPV DA		377-7/8	296 (300-7/8)	
LNAV/VNAV DA		550-1 3/8	469 (500-1 3/8)	
LNAV MDA	580-1	499 (500-1)	580-1 3/8	499 (500-1 3/8)
CIRCLING	580-1	495 (500-1)	660-1 1/2 575 (600-1 1/2)	660-2 575 (600-2)

NE-2, 16 APR 2026 to 14 MAY 2026

NE-2, 16 APR 2026 to 14 MAY 2026