

WAAS CH <b>42700</b> W <b>28A</b>	APP CRS <b>281°</b>	Rwy Idg TDZE Apt Elev	<b>6003</b> <b>85</b> <b>85</b>
---	------------------------	-----------------------------	---------------------------------------

# RNAV (GPS) RWY 28

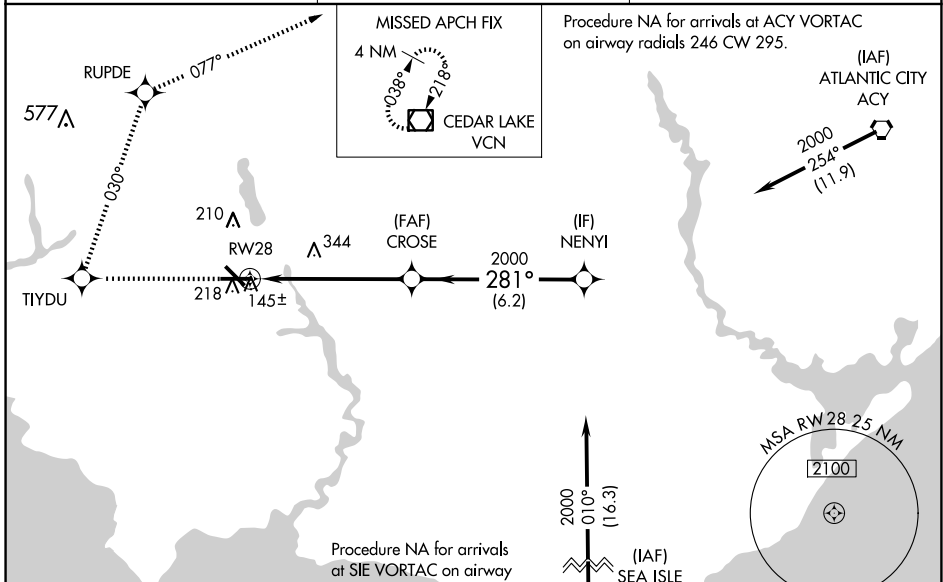
MILLVILLE MUNI (MIV)

RNP APCH-GPS.

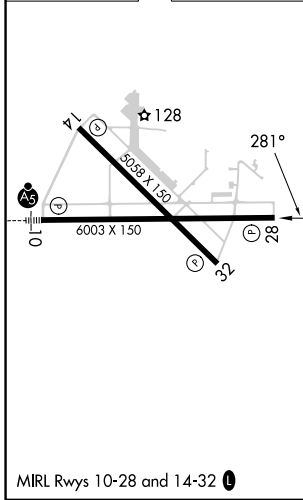
▼ For uncompensated Baro-VNAV systems, LNAV/VNAV NA below -15°C or above 54°C. When local altimeter setting not received, use Atlantic City altimeter setting and increase all DA/MDA 60 feet; increase LNAV/VNAV all Cats, LNAV Cats C/D and Circling Cat C visibility ¼ mile. VDP and Baro-VNAV NA when using Atlantic City altimeter setting.

MISSED APPROACH: Climb to 2000 direct TIYDU and right turn on track 030° to RUPDE and right turn 077° track to VCN VOR/DME and hold.

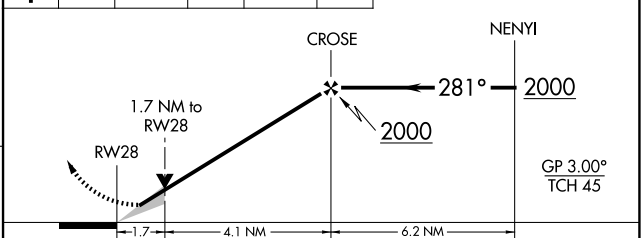
ASOS <b>119.6</b>	ATLANTIC CITY APP CON <b>124.6 327.125</b>	UNICOM <b>123.0 (CTAF) 0</b>
----------------------	---	---------------------------------



ELEV 85	TDZE 85
---------	---------



2000 TIYDU	RUPDE	VCN	VGSI and RNAV glidepath not coincident (VGSI Angle 3.00/TCH 29)
↑	tr 030°	tr 077°	



CATEGORY	A	B	C	D
LPV DA		344-1	259 (300-1)	
LNAV/VNAV DA		405-1	320 (400-1)	
LNAV MDA	640-1	555 (600-1)	640-1½ 555 (600-1½)	640-1¾ 555 (600-1¾)
CIRCLING	640-1	555 (600-1)	660-1½ 575 (600-1½)	660-2 575 (600-2)

NE-2, 16 APR 2026 to 14 MAY 2026

NE-2, 16 APR 2026 to 14 MAY 2026