



LOC I-VLD 110.9	APP CRS 356°	Rwy Ldg 8002
		TDZE 200
		Apr Elev 203

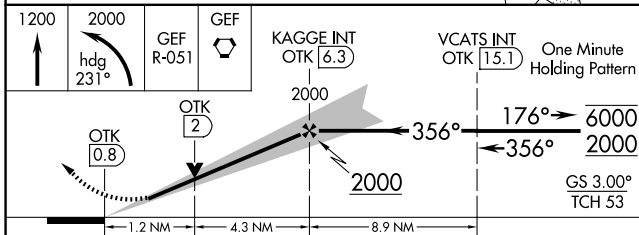
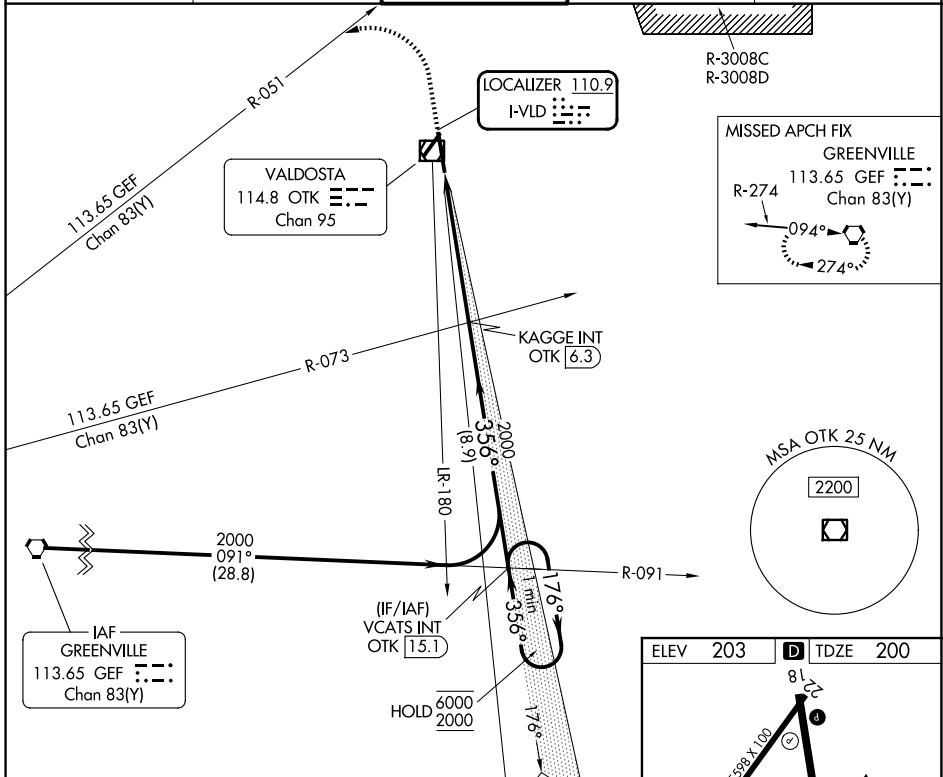
ILS or LOC RWY 36

VALDOSTA RGNL (VLD)

⚠ Rwy 36 helicopter visibility reduction below 3/4 SM NA. DME from OTK VOR/DME. DME use requires simultaneous reception of I-VLD and OTK DME. For inop ALS, increase S-ILS 36 all Cats visibility to 3/8 SM, increase S-LOC 36 Cats A and B visibility to 1 SM and Cat E visibility to 1 1/4 SM.

MALSR  MISSED APPROACH: Climb to 1200 then climbing left turn to 2000 on heading 231° and GEF R-051 to GEF VORTAC and hold.

ASOS 126.225	VALDOSTA APP CON * 126.6 285.6	VALDOSTA TOWER * 128.35 (CTAF) 	GND CON 121.7	UNICOM 122.95
------------------------	--	--	-------------------------	-------------------------



ELEV	203	TDZE	200
