


WAAS CH 86206 W36A	APP CRS 356°	Rwy Ldg TDZE Apt Elev	8002 200 203
--	------------------------	-----------------------------	---

RNAV (GPS) RWY 36

VALDOSTA RGNL (VLD)

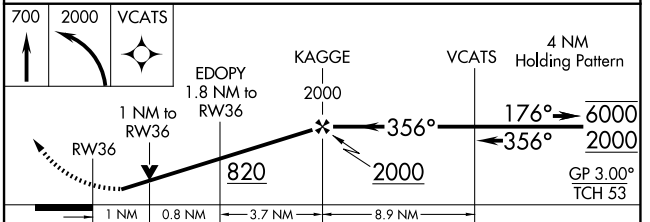
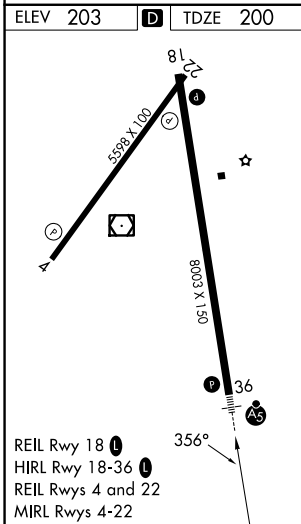
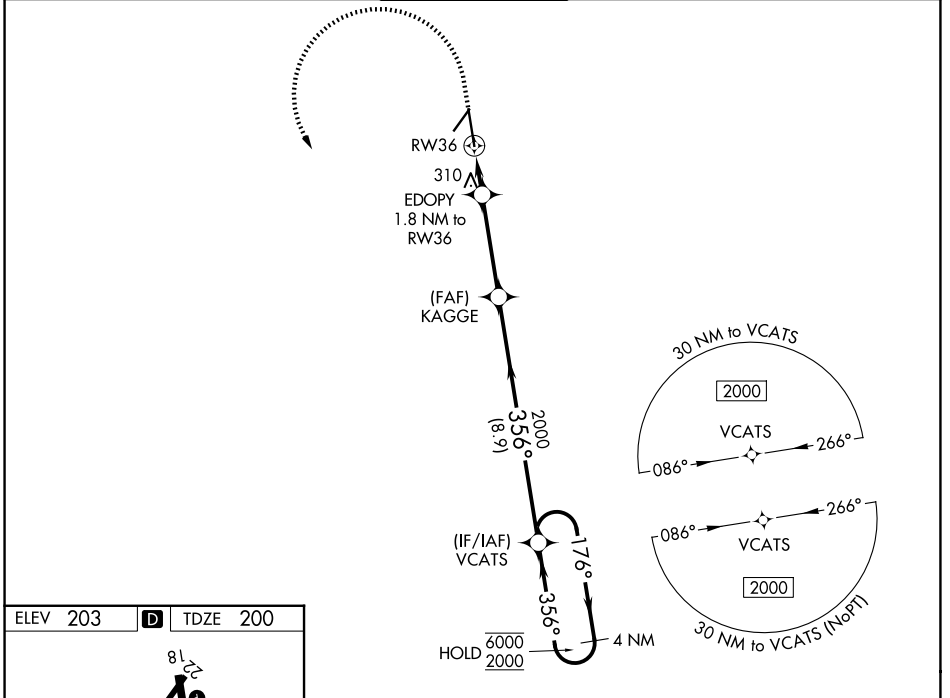
RNP APCH - GPS.

⚠ For uncompensated Baro-VNAV systems, LNAV/VNAV NA below -4°C or above 54°C. Rwy 36 helicopter visibility reduction below ¾ SM NA. For inop ALS, increase LPV and LNAV/VNAV all Cats visibility to ¾ SM and LNAV all Cats visibility to 1 SM.

MALSR 

MISSED APPROACH: Climb to 700 then climbing left turn to 2000 direct VCATS and hold.

ASOS 126.225	VALDOSTA APP CON * 126.6 285.6	VALDOSTA TOWER * 128.35 (CTAF) 	GND CON 121.7	UNICOM 122.95
------------------------	--	--	-------------------------	-------------------------



CATEGORY	A	B	C	D
LPV DA		489-¾	289 (300-¾)	
LNAV/VNAV DA		482-¾	282 (300-¾)	
LNAV MDA		560-¾	360 (400-¾)	
CIRCLING	640-1	700-1	900-2	1020-2¾
	437 (500-1)	497 (500-1)	697 (700-2)	817 (900-2¾)