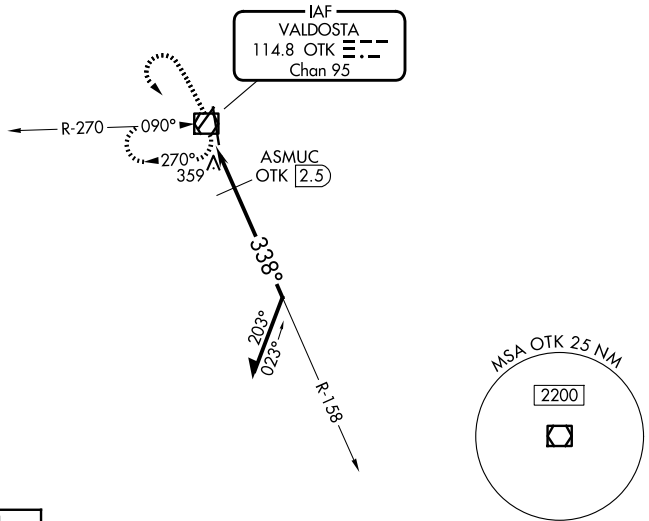


VOR/DME OTK 114.8 Chan 95	APP CRS 338°	Rwy Ldg 8002 TDZE 201 Apt Elev 203
---	------------------------	---

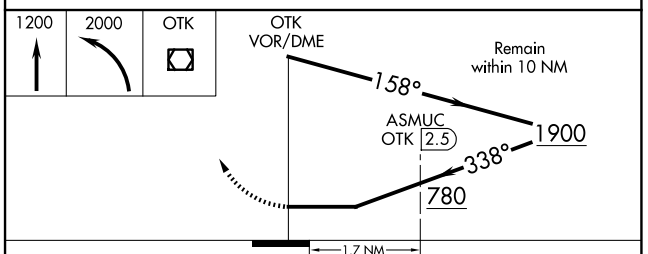
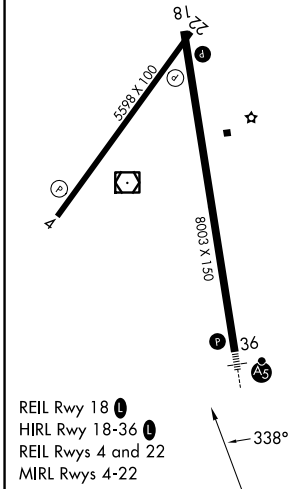
VOR RWY 36

VALDOSTA RGNL (VLD)

<p>▼ Rwy 36 helicopter visibility reduction below 1 SM NA. For inop ALS, increase S-36 Cats C and D visibility to 1½ SM. ASMUC fix minimums: increase S-36 C and D visibility to 1½ SM. Circling Rwy 4 and 22 NA at night. Inop table does not apply to S-36 Cats A and B and ASMUC fix minimums: Cat A and B. Straight-in and Circling Rwy 36 NA at night.</p>		<p>MALSRL</p>	<p>MISSED APPROACH: Climb to 1200 then climbing left turn to 2000 direct OTK VOR/DME and hold, continue climb-in-hold to 2000.</p>	
ASOS 126.225	VALDOSTA APP CON * 126.6 285.6	VALDOSTA TOWER * 128.35 (CTAF) 0	GND CON 121.7	UNICOM 122.95



ELEV 203	D	TDZE 201
----------	----------	----------



CATEGORY	A	B	C	D
S-36	780-1	579 (600-1)	780-1¼	579 (600-1¼)
CIRCLING	780-1	577 (600-1)	900-2 697 (700-2)	1020-2¾ 817 (900-2¾)
ASMUC FIX MINIMUMS				
S-36	620-1 419 (500-1)			
CIRCLING	660-1 457 (500-1)	700-1 497 (500-1)	900-2 697 (700-2)	1020-2¾ 817 (900-2¾)