

WAAS CH <b>49036</b> W14A	APP CRS <b>141°</b>	Rwy Ldg TDZE <b>543</b> Apt Elev <b>543</b>	<b>8038</b>
---------------------------------	------------------------	---	-------------

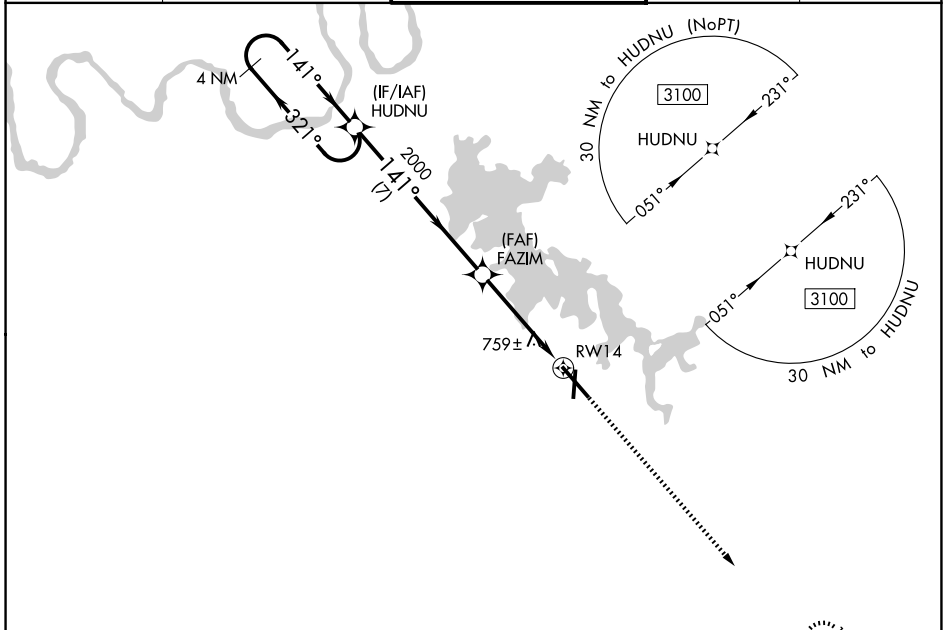
# RNAV (GPS) RWY 14

SMYRNA (MQY)

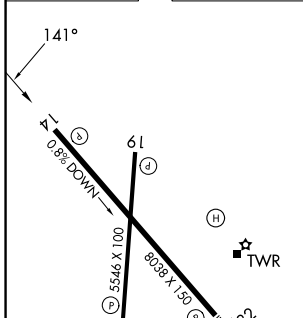
**⚠** DME/DME RNP-0.3 NA. When local altimeter setting not received, use Nashville Intl altimeter setting and increase all MDA 40 feet; increase LNAV Cat C and D visibility 1/8 mile, and increase Circling Cat C visibility 1/4 mile. VDP NA when using Nashville Intl altimeter setting. Helicopter visibility reduction below 3/4 SM NA.

MISSED APPROACH: Climb to 3000 direct JOPIV and hold.

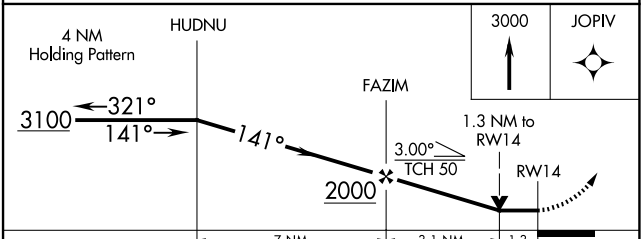
AWOS-3PT <b>119.125</b>	NASHVILLE APP CON <b>118.4 360.7</b>	SMYRNA TOWER ★ <b>118.5 (CTAF) 0 233.1</b>	GND CON <b>121.4</b>	UNICOM <b>122.95</b>
----------------------------	---	---	-------------------------	-------------------------



ELEV <b>543</b>	TDZE <b>543</b>
-----------------	-----------------



REIL Rwy 14 **①**  
 HIRL Rwy 14-32 **②**  
 MIRL Rwy 1-19 **③**  
 REIL Rwy 1, 19, and 32



	A	B	C	D
CATEGORY	A	B	C	D
LP MDA	1020-1	477 (500-1)	1020-1 <sup>3</sup> / <sub>8</sub>	477 (500-1 <sup>3</sup> / <sub>8</sub> )
LNAV MDA	1040-1	497 (500-1)	1040-1 <sup>3</sup> / <sub>8</sub>	497 (500-1 <sup>3</sup> / <sub>8</sub> )
CIRCLING	1100-1 557 (600-1)	1200-1 657 (700-1)	1260-2 717 (800-2)	1480-3 937 (1000-3)

SE-1, 16 APR 2026 to 14 MAY 2026

SE-1, 16 APR 2026 to 14 MAY 2026