

WAAS CH <b>93512</b> <b>W32A</b>	APP CRS <b>321°</b>	Rwy Ldg TDZE Apt Elev	<b>8038</b> <b>518</b> <b>543</b>
--	------------------------	-----------------------------	---

# RNAV (GPS) RWY 32

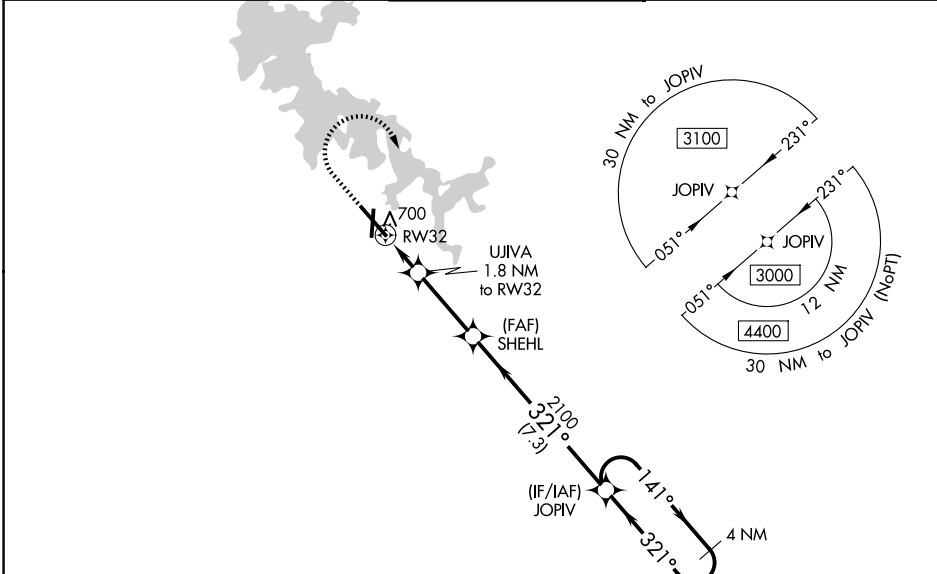
SMYRNA (MQY)

**⚠** For uncompensated Baro-VNAV systems, LNAV/VNAV NA below -16°C (4°F) or above 54°C (130°F). DME/DME RNP-0.3 NA. For inop MALSRS when using Nashville Intl altimeter setting, increase LNAV/VNAV all Cats visibility to 1 1/8 mile. When local altimeter setting not received, use Nashville Intl altimeter setting and increase LPV DA to 749 feet, LNAV/VNAV DA to 998 feet, and all MDA 40 feet; increase LNAV Cats C/D visibility 1/8 mile and increase Circling Cat C visibility 1/4 mile. Baro-VNAV and VDP NA when using Nashville Intl altimeter setting.

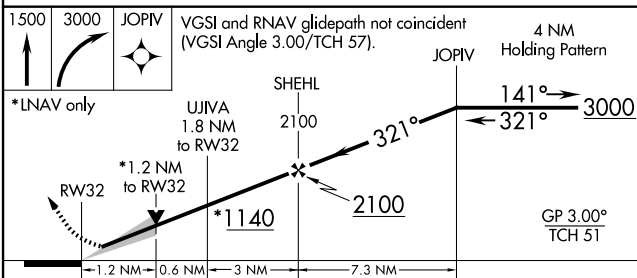
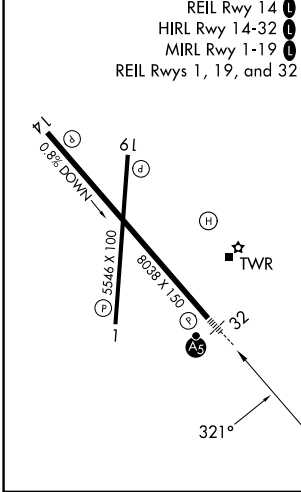
**MALSRS**

**MISSED APPROACH:**  
Climb to 1500 then climbing right turn to 3000 direct JOPIV and hold.

AWOS-3PT <b>119.125</b>	NASHVILLE APP CON <b>118.4 360.7</b>	SMYRNA TOWER ★ <b>118.5 (CTAF) 0 233.1</b>	GND CON <b>121.4</b>	UNICOM <b>122.95</b>
----------------------------	---	---	-------------------------	-------------------------



ELEV <b>543</b>	TDZE <b>518</b>
-----------------	-----------------



CATEGORY	A	B	C	D
LPV DA		718-1/2	200 (200-1/2)	
LNAV/VNAV DA		967-1	449 (500-1)	
LNAV MDA	960-1/2	442 (500-1/2)	960-7/8	442 (500-7/8)
CIRCLING	1100-1	1200-1	1260-2	1480-3
	557 (600-1)	657 (700-1)	717 (800-2)	937 (1000-3)

SE-1, 16 APR 2026 to 14 MAY 2026

SE-1, 16 APR 2026 to 14 MAY 2026