

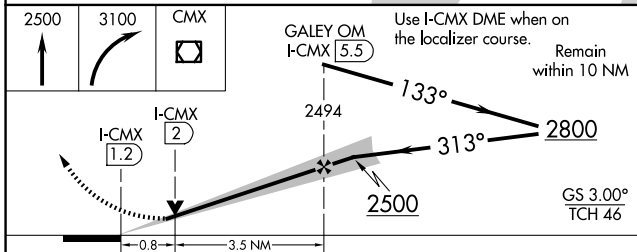
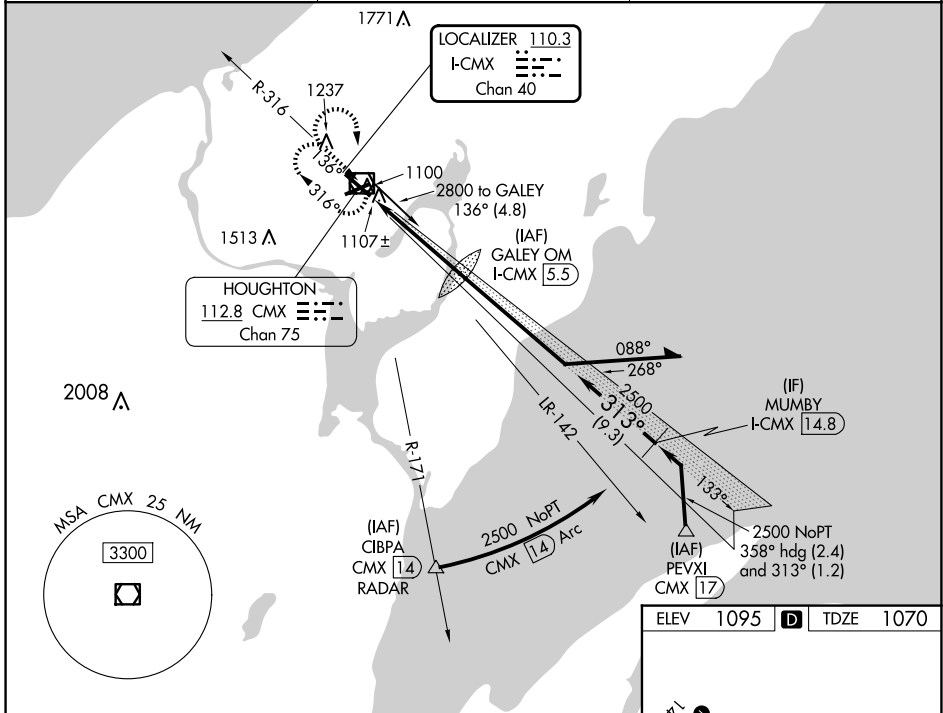
LOC/DME I-CMX <b>110.3</b> Chan <b>40</b>	APP CRS <b>313°</b>	Rwy ldg TDZE <b>6501</b> <b>1070</b> Apt Elev <b>1095</b>
---	------------------------	--

# ILS or LOC RWY 32

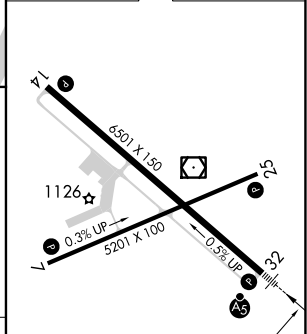
HOUGHTON COUNTY MEML (CMX)

DME required for procedure entry.		MALSR 	MISSED APPROACH: Climb to 2500 then climbing right turn to 3100 direct CMX VOR/DME and hold.
	For inop ALS, increase S-LOC 32 Cat C/D visibility to ¾ SM.		

ASOS <b>125.675</b>	MINNEAPOLIS CENTER <b>133.55 379.1</b>	UNICOM <b>122.7 (CTAF) 0</b>
------------------------	---	---------------------------------



ELEV 1095	<b>D</b>	TDZE 1070
-----------	----------	-----------



CATEGORY	A	B	C	D
S-ILS 32		1270-½	200 (200-½)	
S-LOC 32		1360-½	290 (300-½)	
<b>C</b> CIRCLING	1620-1 525 (600-1)	1660-1 565 (600-1)	1700-1¾ 605 (700-1¾)	1820-2¼ 725 (800-2¼)

MIRL Rwy 7-25	<b>1</b>
HIRL Rwy 14-32	<b>1</b>
REIL Rwy 7, 14, and 25	<b>1</b>
FAF to MAP 4.3 NM	
Knots	60 90 120 150 180
Min:Sec	4:18 2:52 2:09 1:43 1:26

EC-1, 16 APR 2026 to 14 MAY 2026

EC-1, 16 APR 2026 to 14 MAY 2026