

WAAS CH 93533 W14A	APP CRS 133°	Rwy Idg TDZE Apt Elev	6501 1095 1095
--	------------------------	-----------------------------	---

RNAV (GPS) RWY 14

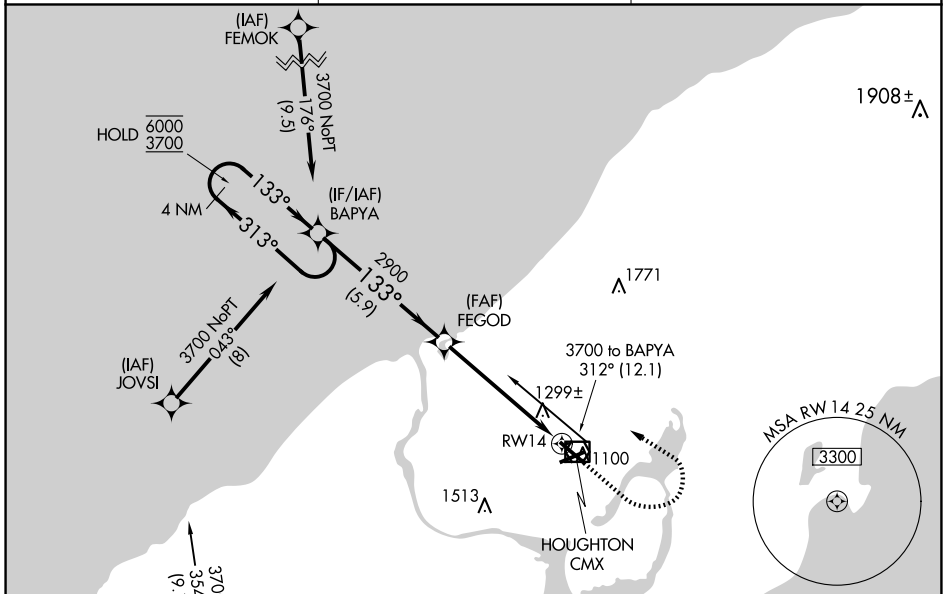
HOUGHTON COUNTY MEML (CMX)

RNP APCH - GPS.

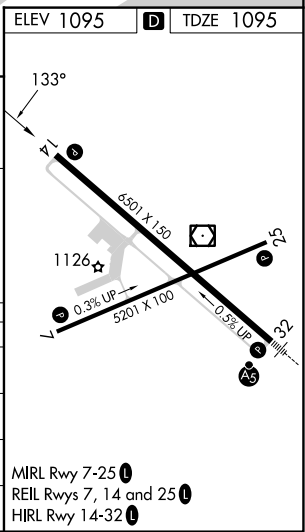
⚠ Rwy 14 helicopter visibility reduction below ¾ SM NA.
For uncompensated Baro-VNAV systems,
LNAV/VNAV NA below -21°C or above 54°C.

MISSED APPROACH: Climb to 2400 then climbing left turn to 3700 direct BAPYA and hold.

ASOS 125,675	MINNEAPOLIS CENTER 133.55 379.1	UNICOM 122.7 (CTAF)
------------------------	---	-------------------------------



4 NM Holding Pattern		VGSI and RNAV glidepath not coincident (VGSI Angle 3.00/TCH 43).		2400	3700	BAPYA
GP 3.00° TCH 46		FEGOD		1.3 NM to RWY 14		
6000 3700		133°		RWY 14		
← 313°		133°		2900		
5.9 NM		4.2 NM		1.3 NM		
CATEGORY	A	B	C	D		
LPV DA		1414-7/8	319 (400-7/8)			
LNAV/VNAV DA		1626-1 1/2	531 (600-1 1/2)			
LNAV MDA	1560-1	465 (500-1)	1560-1 3/8	465 (500-1 3/8)		
C CIRCLING	1620-1 525 (600-1)	1660-1 565 (600-1)	1700-1 3/4 605 (700-1 3/4)	1820-2 1/4 725 (800-2 1/4)		



EC-1, 16 APR 2026 to 14 MAY 2026

EC-1, 16 APR 2026 to 14 MAY 2026