

WAAS CH 86634 W25A	APP CRS 249°	Rwy Idg TDZE Apt Elev	5201 1075 1095
--	------------------------	-----------------------------	---

RNAV (GPS) RWY 25

HOUGHTON COUNTY MEML (CMX)

RNP APCH.

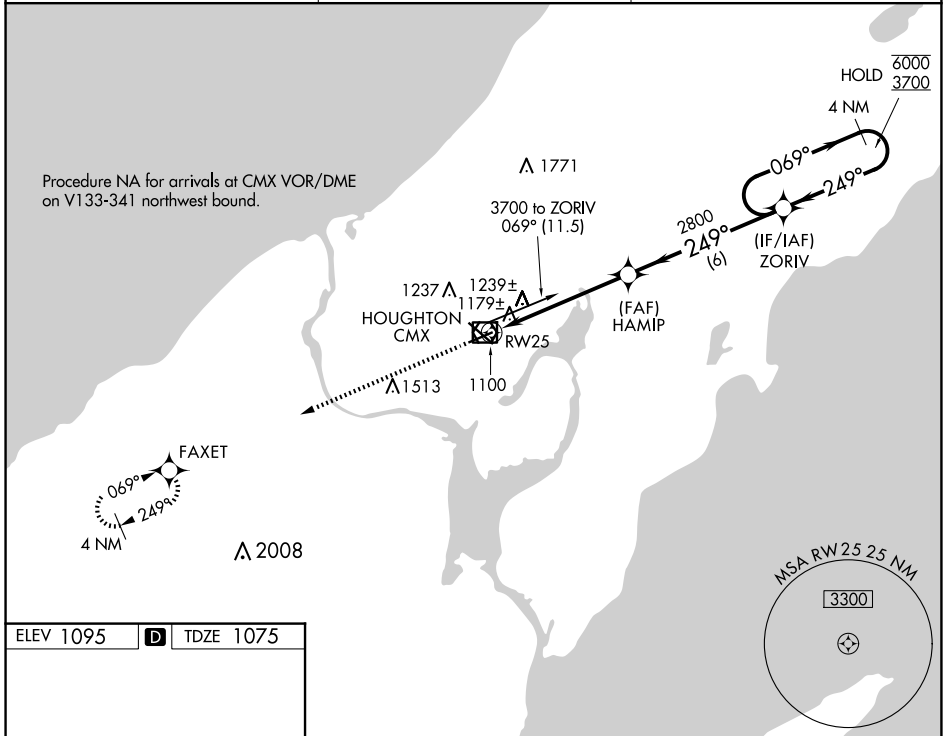
▽
▲ Rwy 25 helicopter visibility reduction below ¾ SM NA.

MISSED APPROACH: Climb to 3700 direct FAXET and hold.

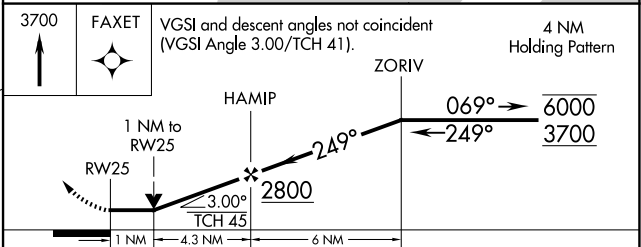
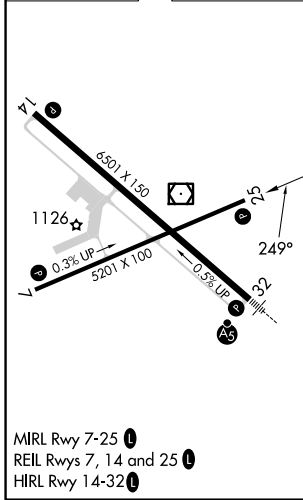
ASOS
125.675

MINNEAPOLIS CENTER
133.55 379.1

UNICOM
122.7 (CTAF) 0



ELEV 1095	D	TDZE 1075
-----------	----------	-----------



CATEGORY	A	B	C	D
LP MDA	1440-1		365 (400-1)	
LNAV MDA	1500-1	425 (500-1)	1500-1¼	425 (500-1¼)
C CIRCLING	1620-1 525 (600-1)	1660-1 565 (600-1)	1700-1¾ 605 (700-1¾)	1820-2¼ 725 (800-2¼)

EC-1, 16 APR 2026 to 14 MAY 2026

EC-1, 16 APR 2026 to 14 MAY 2026