

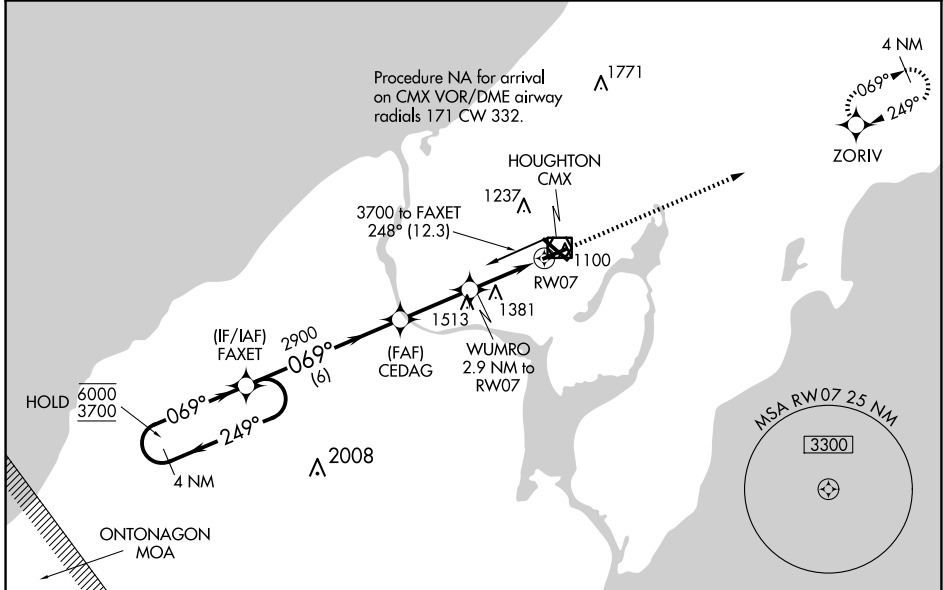
WAAS CH <b>58233</b> <b>W07A</b>	APP CRS <b>069°</b>	Rwy Idg TDZE Apt Elev	<b>5201</b> <b>1067</b> <b>1095</b>
--	------------------------	-----------------------------	---

# RNAV (GPS) RWY 7

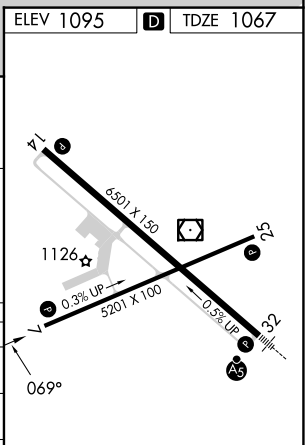
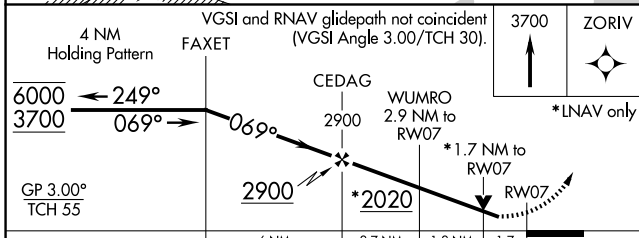
HOUGHTON COUNTY MEML (CMX)

RNP APCH.		<p><b>MISSED APPROACH:</b> Climb to 3700 direct ZORIV and hold.</p>
<p><b>▽</b> <b>▲</b></p> <p>Rwy 7 helicopter visibility reduction below ¼ SM NA. For uncompensated Baro-VNAV systems, LNAV/VNAV NA below -17°C or above 54°C.</p>		

ASOS <b>125,675</b>	MINNEAPOLIS CENTER <b>133.55 379.1</b>	UNICOM <b>122.7 (CTAF) 0</b>
------------------------	---	---------------------------------



ELEV 1095	<b>D</b> TDZE 1067
-----------	--------------------



CATEGORY	A	B	C	D
LPV DA		1431-1	364 (400-1)	
LNAV/VNAV DA		1598-1½	531 (600-1½)	
LNAV MDA	1640-1	573 (600-1)	1640-1½	573 (600-1½)
<b>C</b> CIRCLING	1640-1	545 (600-1)	1700-1¾ 605 (700-1¾)	1820-2¼ 725 (800-2¼)

MIRL Rwy 7-25 0

REIL Rwys 7, 13 and 25 0

HIRL Rwy 13-31 0

EC-1, 16 APR 2026 to 14 MAY 2026

EC-1, 16 APR 2026 to 14 MAY 2026