

WAAS CH 65905 W24A	APP CRS 244°	Rwy Ldg TDZE Apt Elev	6802 560 569
--	------------------------	-----------------------------	---

RNAV (GPS) RWY 24

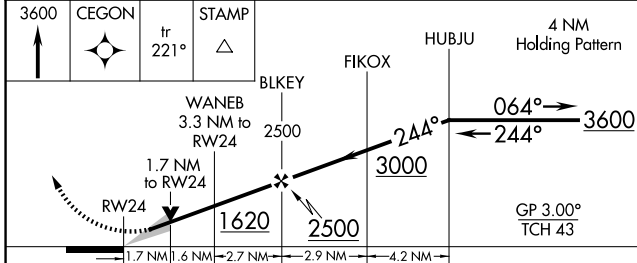
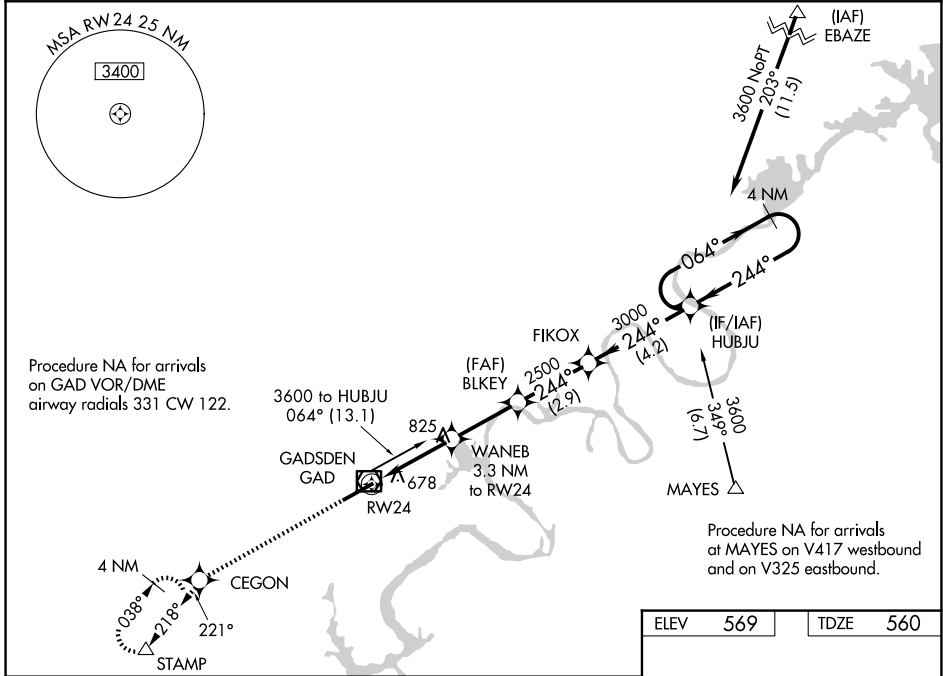
NORTHEAST ALABAMA RGNL (GAD)

RNP APCH-GPS.

▼ For uncompensated Baro-VNAV systems, LNAV/VNAV NA below -16°C or above 54°C.
 ▲ When local altimeter setting is not received, use Annonisum altimeter setting and increase LPV DA to 847 feet and all visibilities 1/8 SM; increase LNAV/VNAV DA to 1082 feet and all visibilities 1/8 SM; increase all MDAs 80 feet and LNAV visibility Cat C/D 1/4 SM, and Circling visibility Cat C 1/2 SM. Baro-VNAV and VDP NA when using Annonisum altimeter setting.

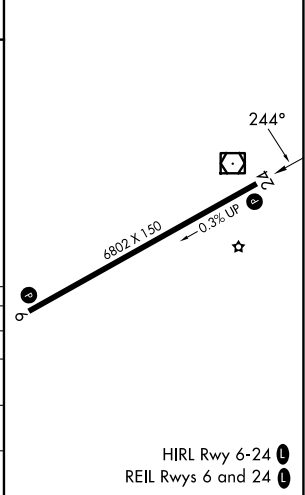
MISSED APPROACH: Climb to 3600 direct CEGON and on track 221° to STAMP and hold, continue climb-in-hold to 3600.

AWOS-3PT 127.825	BIRMINGHAM APP CON 125.45 279.65	CLNC DEL 120.05 257.7	UNICOM 122.725 (CTAF) 0
----------------------------	--	---------------------------------	-----------------------------------



ELEV	569	TDZE	560
------	-----	------	-----

CATEGORY	A	B	C	D
LPV DA		781-3/4	221 (300-3/4)	
LNAV/VNAV DA		1016-1 1/8	456 (500-1 1/8)	
LNAV MDA	1140-1	580 (600-1)	1140-1 1/8	580 (600-1 1/8)
CIRCLING	1140-1	571 (600-1)	1440-2 1/2 871 (900-2 1/2)	1680-3 1111 (1200-3)



SE-4, 16 APR 2026 to 14 MAY 2026

SE-4, 16 APR 2026 to 14 MAY 2026