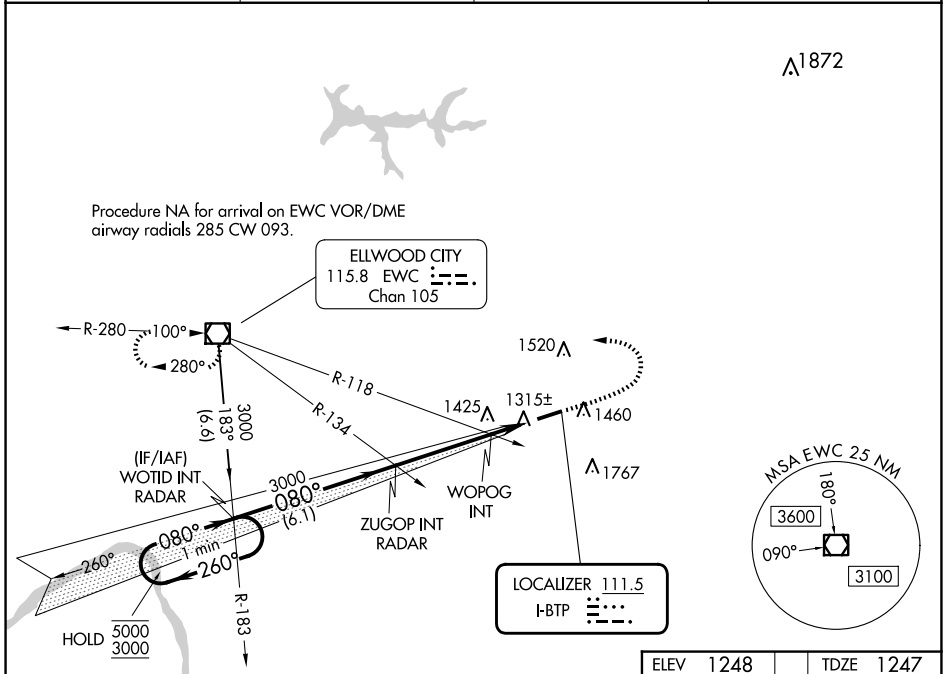


LOC I-BTP 111.5	APP CRS 080°	Rwy Ldg TDZE Apt Elev	4801 1247 1248
---------------------------	------------------------	-----------------------------	---

ILS or LOC RWY 8
PITTSBURGH/BUTLER RGNL (BTP)

<p>▼ Rwy 8 helicopter visibility reduction below 3/4 SM NA. ▲ Inop table does not apply to S-ILS 8 all Cats.</p>	<p>MALSF </p>	<p>MISSED APPROACH: Climb to 1800 then climbing left turn to 3000 direct EWC VOR/DME and hold.</p>
--	-------------------	--

AWOS-3PT 121.45	PITTSBURGH APP CON 124.75 338.2	CLNC DEL 119.4	UNICOM 123.05 (CTAF) 0
---------------------------	---	--------------------------	----------------------------------



NE-4, 16 APR 2026 to 14 MAY 2026

NE-4, 16 APR 2026 to 14 MAY 2026

	ELEV 1248	TDZE 1247				
One Minute Holding Pattern	WOTID INT RADAR	ZUGOP INT RADAR				
<p>5000 ← 260°</p> <p>3000 → 080°</p> <p>GS 3.00° TCH 54</p>	<p>1800 ↑</p> <p>3000 ↙</p> <p>EWC </p>	<p>1740 ↘</p> <p>0.3% UP</p> <p>1293</p> <p>4801 X 100</p> <p>080°</p>				
	6.1 NM	3.6 NM	1.8 NM			
CATEGORY	A	B	C	D		
S-ILS 8		1497-3/4	250 (300-3/4)			
S-LOC 8	1740-3/4	493 (500-3/4)	1740-1 1/8	493 (500-1 1/8)		
C CIRCLING	1820-1	572 (600-1)	2080-2 1/2	2080-2 3/4		
			832 (900-2 1/2)	832 (900-2 3/4)		
WOPOG FIX MINIMUMS (DUAL VOR RECEIVERS REQUIRED)						
S-LOC 8		1600-3/4	353 (400-3/4)			
C CIRCLING	1820-1	572 (600-1)	2080-2 1/2	2080-2 3/4		
			832 (900-2 1/2)	832 (900-2 3/4)		
	FAF to MAP 5.4 NM					
	Knots	60	90	120	150	180
	Min:Sec	5:24	3:36	2:42	2:10	1:48