

WAAS CH 86620	APP CRS W36A	Rwy Idg TDZE Apt Elev	5998 202 206
-------------------------	------------------------	-----------------------------	---

RNAV (GPS) RWY 36

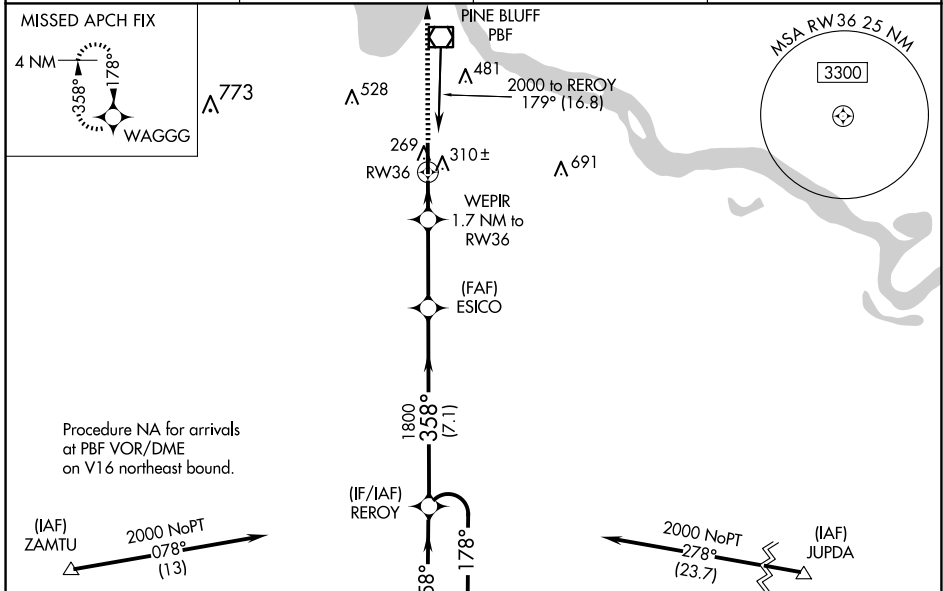
PINEBLUFF RGNL/GRIDER FLD (PBF)

RNP APCH - GPS.

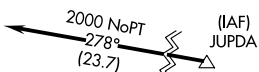
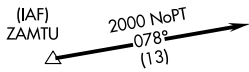
Baro-VNAV and VDP NA when using Stuttgart altimeter setting. For uncompensated Baro-VNAV systems, LNAV/VNAV NA below -1.5°C or above 42°C. When local altimeter setting not received, use Stuttgart altimeter setting and increase LPV DA to 527 feet. Increase LNAV/VNAV DA to 562 feet. Increase all MDAs 80 feet and LNAV visibility Cat C/D ¼ SM, and Circling visibility Cat C/D ¼ SM.

MISSED APPROACH:
Climb to 2000 direct
WAGGG and hold.

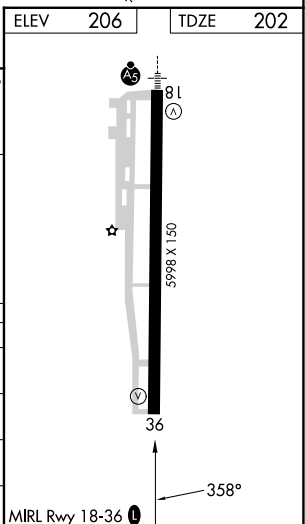
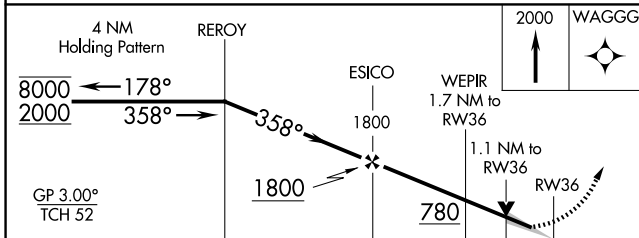
ASOS 120.775	LITTLE ROCK APP CON 119.85 353.6	CLNC DEL 119.85	UNICOM 123.0 (CTAF)
------------------------	--	---------------------------	-------------------------------



Procedure NA for arrivals at PBF VOR/DME on V16 northeast bound.



ELEV	206	TDZE	202
------	-----	------	-----



CATEGORY	A	B	C	D
LPV DA	452-1 250 (300-1)			
LNAV/VNAV DA	487-1 285 (300-1)			
LNAV MDA	600-1 398 (400-1)	600-1 398 (400-1 1/8)		
CIRCLING	660-1 454 (500-1)	680-1 474 (500-1)	840-1 634 (700-1 3/4)	880-2 674 (700-2 1/4)

SC-1, 16 APR 2026 to 14 MAY 2026

SC-1, 16 APR 2026 to 14 MAY 2026