

SAN DIEGO, CALIFORNIA

ILS Z or LOC/DME Z RWY 24R

LOC/DME I-NKX 111.15 Chan 48(Y)	APCH CRS 243°	Rwy Idg 8001	24L 24R 12,000
		TDZE 477	475
		Arpt Elev 477	477

[USN]

MIRAMAR MCAS (JOE FOSS FLD) (KNKX)

DME and RADAR required

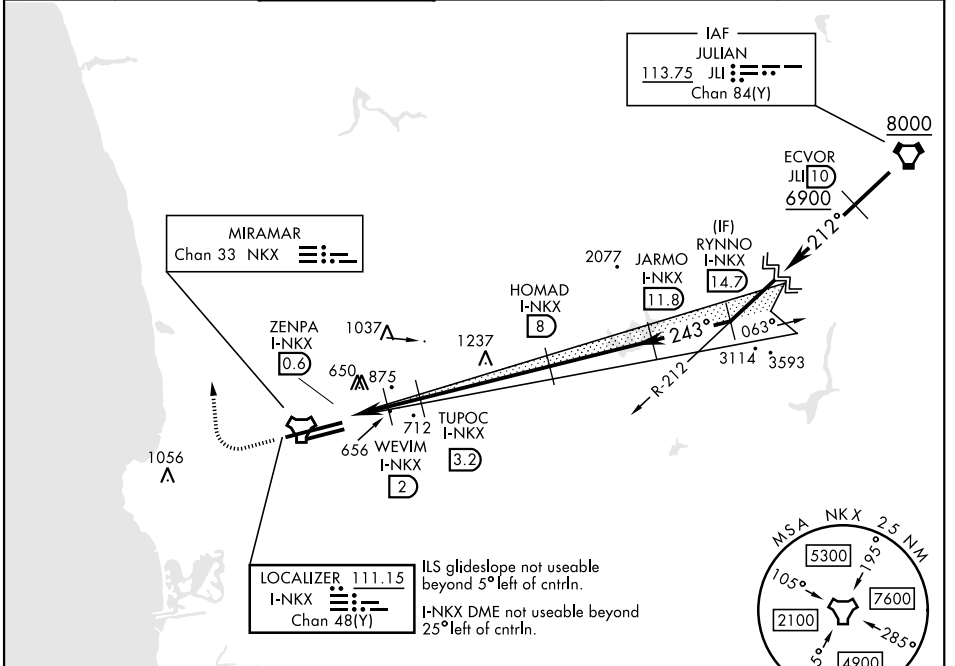
- * When ALS inop, increase vis to ¾ mile.
- ** When ALS inop, increase CAT AB vis to 1 mile, CAT CDE vis to 1 ½ miles.
- *** CAT E circling not authorized S of Rwy 6R-24L.

ALSF-1



MISSED APPROACH: Climb to 1500, then climbing right turn to 3000 via heading 340°. Expect radar vectors.

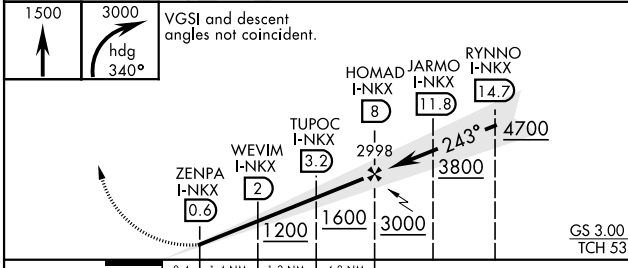
ATIS * 133.475 352.0	SOCAL APP CON 132.2 269.1	FOSS TOWER * 135.2 298.925	GND CON 128.625 307.325	LA CENTER 291.7	ASR/ PAR
--	---	--	---	---------------------------	-------------



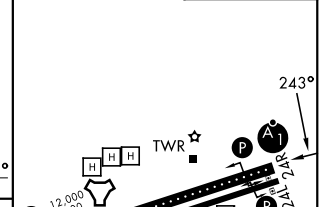
SW-3, 16 APR 2026 to 14 MAY 2026

SW-3, 16 APR 2026 to 14 MAY 2026

EMERG SAFE ALT 100 NM 13,600



ELEV 477	TDZE 24L 477
	TDZE 24R 475



CATEGORY	DISTANCE				
	A	B	C	D	E
S-ILS 24R*	675 - ½		200	(200-½)	
S-LOC 24R**	920-½	445 (500-½)	920-¾	445 (500-¾)	
SIDESTEP 24L	920-1	443 (500-1)	920-1½	920-2	
			443 (500-1½)	443 (500-2)	
CIRCLING***	940-1	960-1	960-1½	1180-2¼	1360-3
	463 (500-1)	483 (500-1)	483 (500-1½)	703 (800-2¼)	883 (900-3)

HIRL Rwy 6L-24R
HIRL Rwy 6R-24L

SAN DIEGO, CALIFORNIA

32°52'N-117°09'W

MIRAMAR MCAS (JOE FOSS FLD) (KNKX)

Amtd 1 29DEC22

ILS Z or LOC/DME Z RWY 24R