

# RNAV (GPS) RWY 24L

[USN]

MIRAMAR MCAS (JOE FOSS FLD) (KNKX)

WAAS CH 54028 W24A	APCH CRS 243°	Rwy Idg TDZE Arprt Elev	8001 477 477
--------------------------	------------------	-------------------------------	--------------------

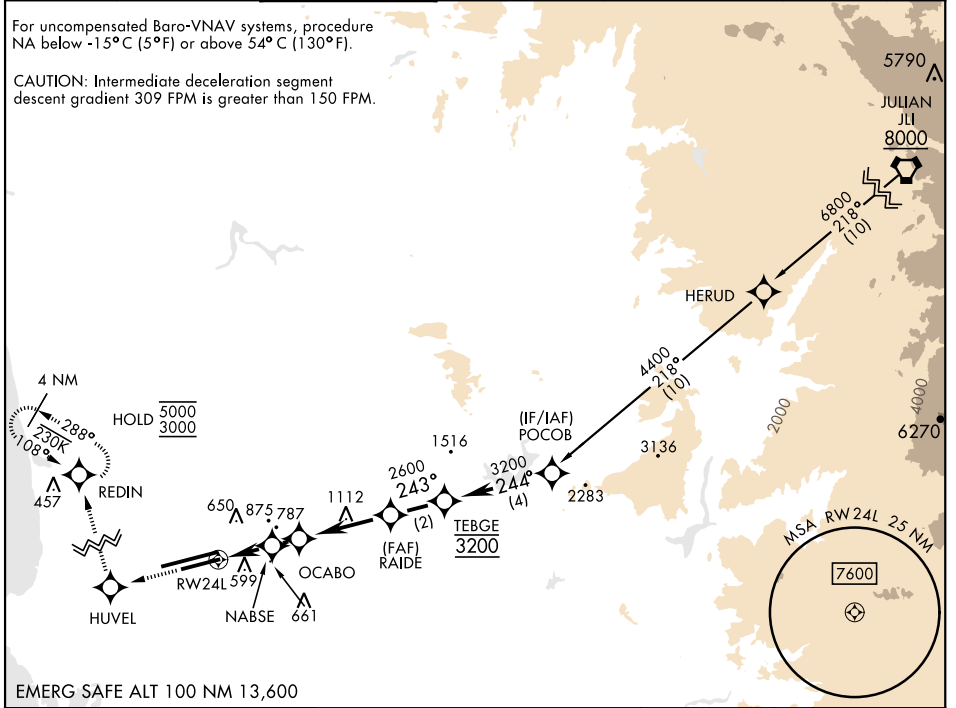
RNP APCH

MISSED APPROACH: Climb to 3000 direct HUVEL, 288° track to REDIN and hold.

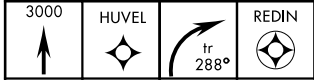
ATIS ★ 133.475 352.0	SOCAL APP CON 132.2 269.1	FOSS TOWER ★ 135.2 298.925 0	GND CON 128.625 307.325	CLNC DEL 125.975 254.325	LA CENTER 291.7	ASR/ PAR
----------------------------	---------------------------------	------------------------------------	-------------------------------	--------------------------------	--------------------	-------------

For uncompensated Baro-VNAV systems, procedure NA below -15°C (5°F) or above 54°C (130°F).

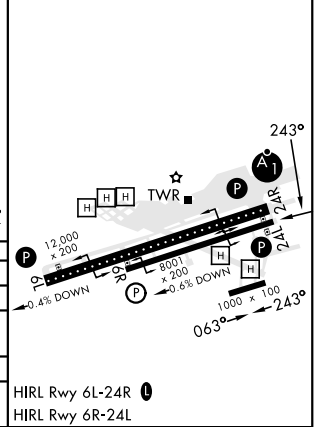
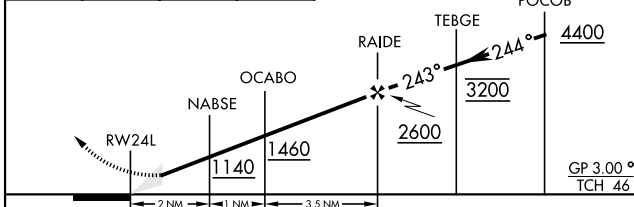
CAUTION: Intermediate deceleration segment descent gradient 309 FPM is greater than 150 FPM.



EMERG SAFE ALT 100 NM 13,600



ELEV	477	TDZE	477
------	-----	------	-----



CATEGORY	A	B	C	D
LPV DA	677-3/4		200	(200-3/4)
LNAV/VNAV DA	730-3/4 253 (300-3/4)	741-7/8 264 (300-7/8)	749-7/8 272 (300-7/8)	760-7/8 283 (300-7/8)
LNAV MDA	960-1	483 (500-1)	960-1 3/8	483 (500-1 3/8)
CIRCLING	960-1	483 (500-1)	483 (500-1 1/2)	703 (800-2 1/4)

HIRL Rwy 6L-24R 0  
HIRL Rwy 6R-24L

# RNAV (GPS) RWY 24L

SW-3, 16 APR 2026 to 14 MAY 2026

SW-3, 16 APR 2026 to 14 MAY 2026