

WAAS CH 70303 W05A	APP CRS 045°	Rwy Ldg TDZE Apt Elev	5601 205 221
--	------------------------	-----------------------------	---

RNAV (GPS) RWY 5

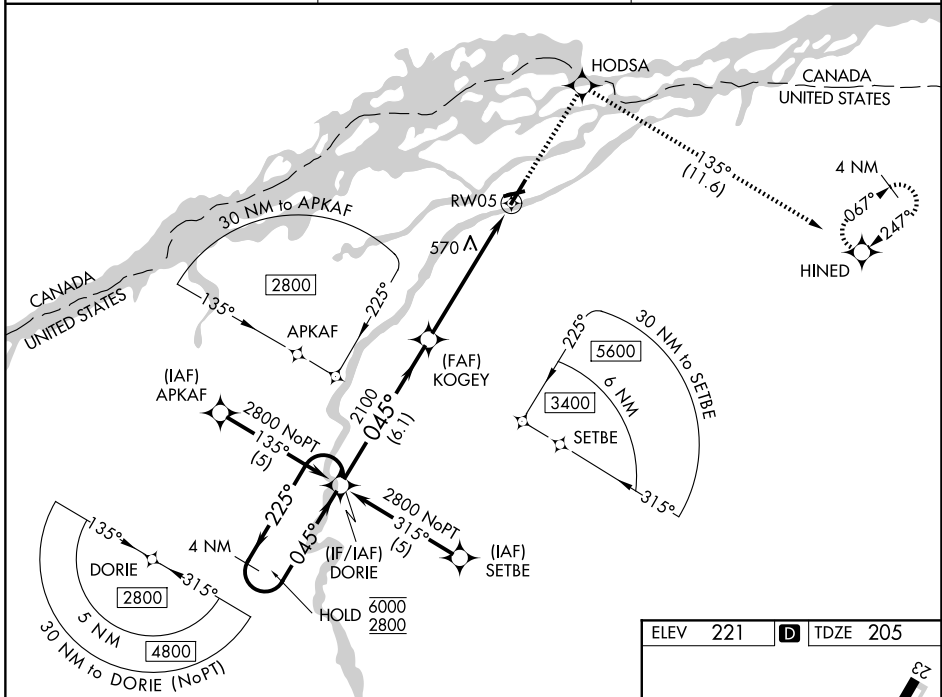
MASSENA INTL-RICHARDS FLD (MSS)

RNP APCH - GPS.

⚠ Circling Rwy 9, 23, 27 NA at night. For uncompensated Baro-VNAV systems, LNAV/VNAV NA below -15°C or above 54°C. When local altimeter setting not received, use PTD altimeter setting: increase LPV DA to 528 feet and all visibilities ¼ SM; increase LNAV/VNAV DA to 933 feet and all visibilities ½ SM; increase all MDAs 80 feet and LNAV visibility Cats C and D ½ SM, and Circling visibility Cats C and D ¼ SM.

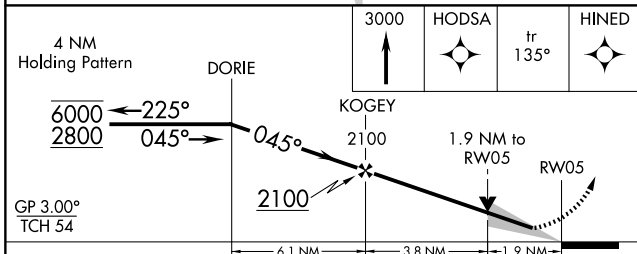
MISSED APPROACH: Climb to 3000 direct HODSA and on track 135° to HINED and hold.

ASOS 128.075	BOSTON CENTER 135.25 377.1	UNICOM 123.0 (CTAF) 1
------------------------	--------------------------------------	---------------------------------



NE-2, 16 APR 2026 to 14 MAY 2026

NE-2, 16 APR 2026 to 14 MAY 2026



CATEGORY	A	B	C	D
LPV DA		455-3/4	250 (300-3/4)	
LNAV/VNAV DA		860-17/8	655 (700-17/8)	
LNAV MDA	860-1	655 (700-1)	860-17/8	655 (700-17/8)
CIRCLING	860-1	639 (700-1)	880-17/8 659 (700-17/8)	900-2 1/4 679 (700-2 1/4)

