

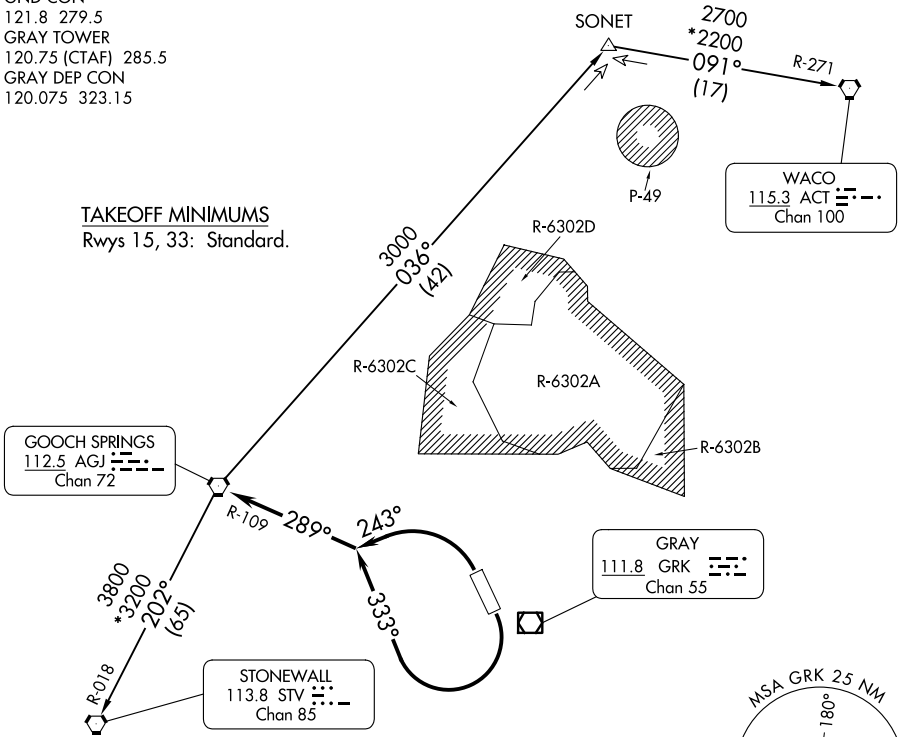
# LAMPS EIGHT DEPARTURE

ATIS  
124.9  
CLNC DEL  
126.2 251.1  
GND CON  
121.8 279.5  
GRAY TOWER  
120.75 (CTAF) 285.5  
GRAY DEP CON  
120.075 323.15

RADAR required.

**TOP ALTITUDE:  
ASSIGNED BY ATC**

**TAKEOFF MINIMUMS**  
Rwys 15, 33: Standard.



NOTE: WACO TRANSITION for aircraft inbound to terminal area airports.

NOTE: Chart not to scale.

## DEPARTURE ROUTE DESCRIPTION

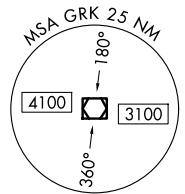
**TAKEOFF RUNWAY 15:** Climbing right turn heading 333° (to assigned altitude) to intercept and proceed on AGJ R-109. Thence . . . .

**TAKEOFF RUNWAY 33:** Climbing left turn heading 243° (to assigned altitude) to intercept and proceed on AGJ R-109. Thence . . . .

. . . . on (transition) or (assigned route). Maintain ATC assigned altitude.

**STONEWALL TRANSITION (LAMPS8.STV):** From over AGJ VORTAC on AGJ R-202 and STV R-018 to STV VORTAC.

**WACO TRANSITION (LAMPS8.ACT):** From over AGJ VORTAC on AGJ R-036 to SONET INT, then on ACT R-271 to ACT VORTAC.



SC-3, 16 APR 2026 to 14 MAY 2026

SC-3, 16 APR 2026 to 14 MAY 2026