

WAAS CH 82399 W33A	APP CRS 333°	Rwy Ldg TDZE 9803 995	Apt Elev 1015
--	------------------------	---	-------------------------

RNAV (GPS) RWY 33

ROBERT GRAY AAF (GRK)

RNP APCH - GPS.

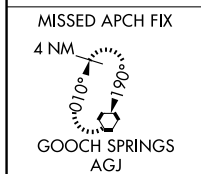
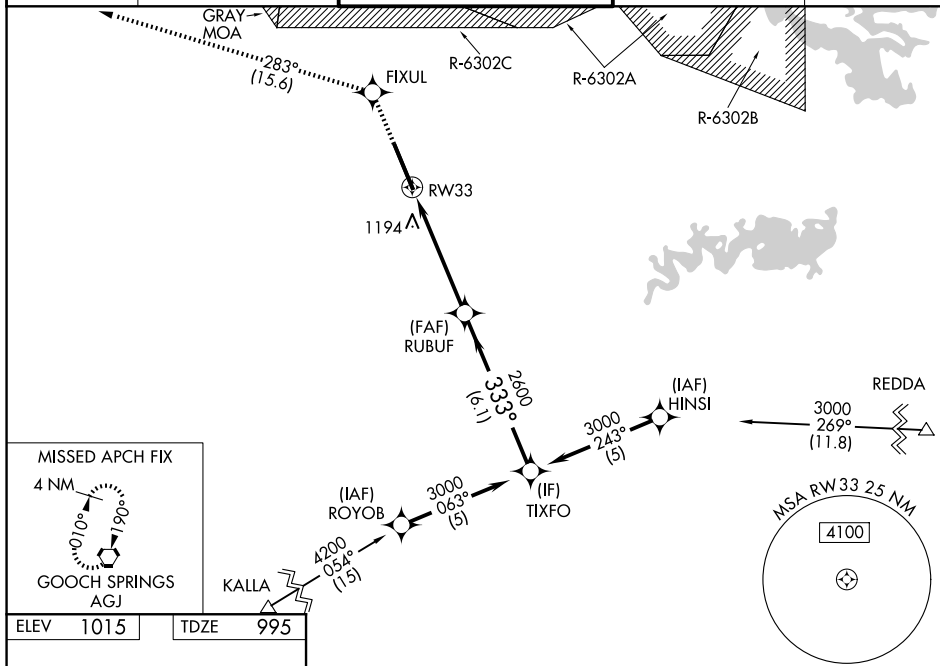
⚠ For uncompensated Baro-VNAV systems, LNAV/VNAV NA below -17°C or above 54°C. Circling NA west of Rwy 15-33.
⚠ For inop ALS, increase LPV Cat E visibility to ¾ SM, LNAV/VNAV Cat E visibility to 2 SM, and LNAV Cat E visibility to 1½ SM.

MALSR

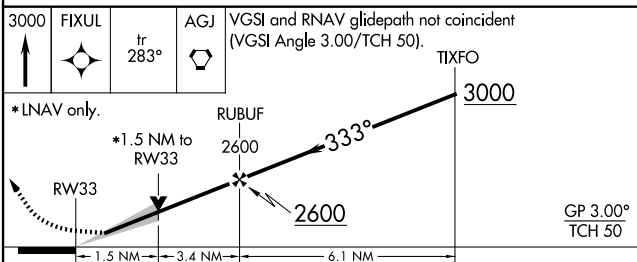
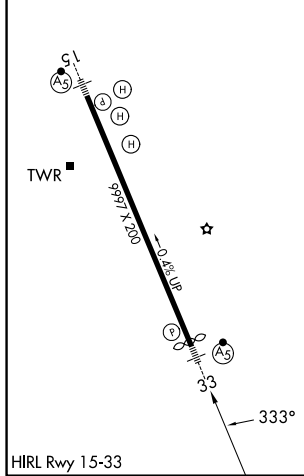


MISSED APPROACH: Climb to 3000 direct FIXUL and on track 283° to AGJ VORTAC and hold.

ATIS 124.9	GRAY APP CON 120.075 323.15	GRAY TOWER 120.75(CTAF) 285.5	GND CON 121.8 279.5	CLNC DEL 126.2 251.1
----------------------	---------------------------------------	---	-------------------------------	--------------------------------



ELEV	1015	TDZE	995
------	------	------	-----



CATEGORY	A	B	C	D	E
LPV DA	1195-½		200 (200-½)		
LNAV/VNAV DA	1552-1½		557 (600-1½)		
LNAV MDA	1460-½	465 (500-½)	1460-1	465 (500-1)	
CIRCLING	1540-1	525 (600-1)	1560-1½ 545 (600-1½)	1620-2 605 (700-2)	1740-2½ 725 (800-2½)

SC-3, 16 APR 2026 to 14 MAY 2026

SC-3, 16 APR 2026 to 14 MAY 2026