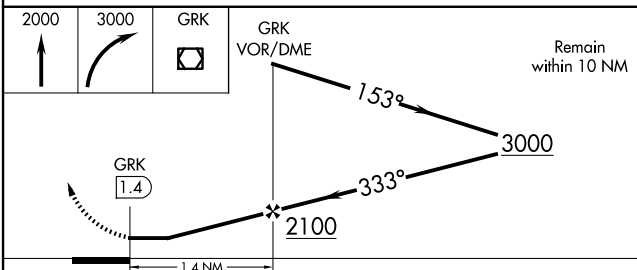
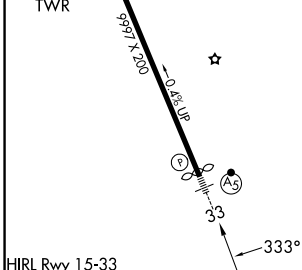
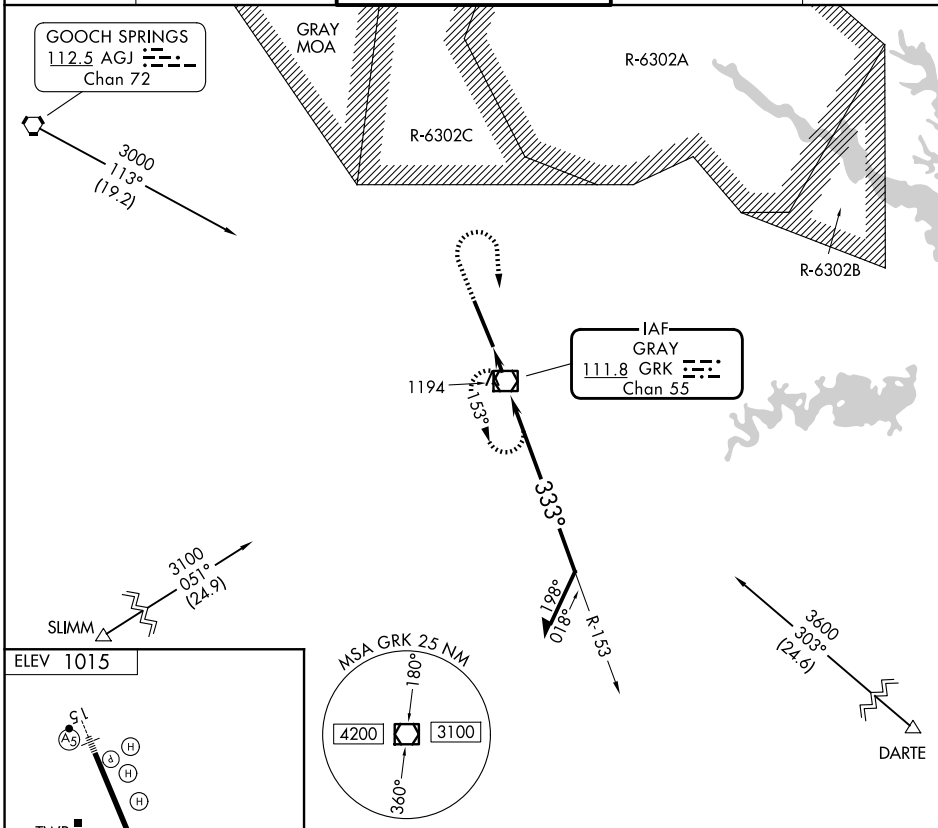


VOR/DME GRK <b>111.8</b> Chan <b>55</b>	APP CRS <b>333°</b>	Rwy Ldg TDZE Apt Elev	<b>N/A</b> <b>N/A</b> <b>1015</b>
---	------------------------	-----------------------------	---

**VOR-A**  
ROBERT GRAY AAF (GRK)

**NA** Circling NA W of Rwy 15-33.  
ASR/PAR MISSED APPROACH: Climb to 2000 then climbing right turn to 3000 direct GRK VOR/DME and hold.

ATIS <b>124.9</b>	GRAY APP CON <b>120.075 323.15</b>	GRAY TOWER <b>120.75(CTAF) 285.5</b>	GND CON <b>121.8 279.5</b>	CLNC DEL <b>126.2 251.1</b>
----------------------	---------------------------------------	---	-------------------------------	--------------------------------



FAF to MAP 1.4 NM						
Knots	60	90	120	150	180	
Min:Sec	1:24	0:56	0:42	0:34	0:28	
CATEGORY	A		B		C	D
CIRCLING	1540-1		525 (600-1)		1560-1½ 545 (600-1½)	1620-2 605 (700-2)

SC-3, 16 APR 2026 to 14 MAY 2026

SC-3, 16 APR 2026 to 14 MAY 2026