

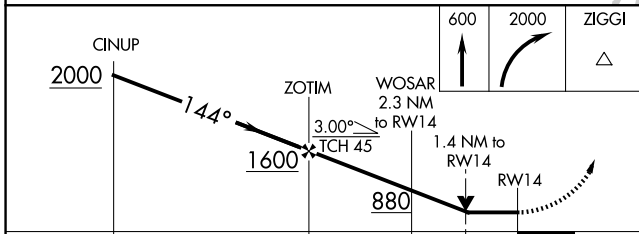
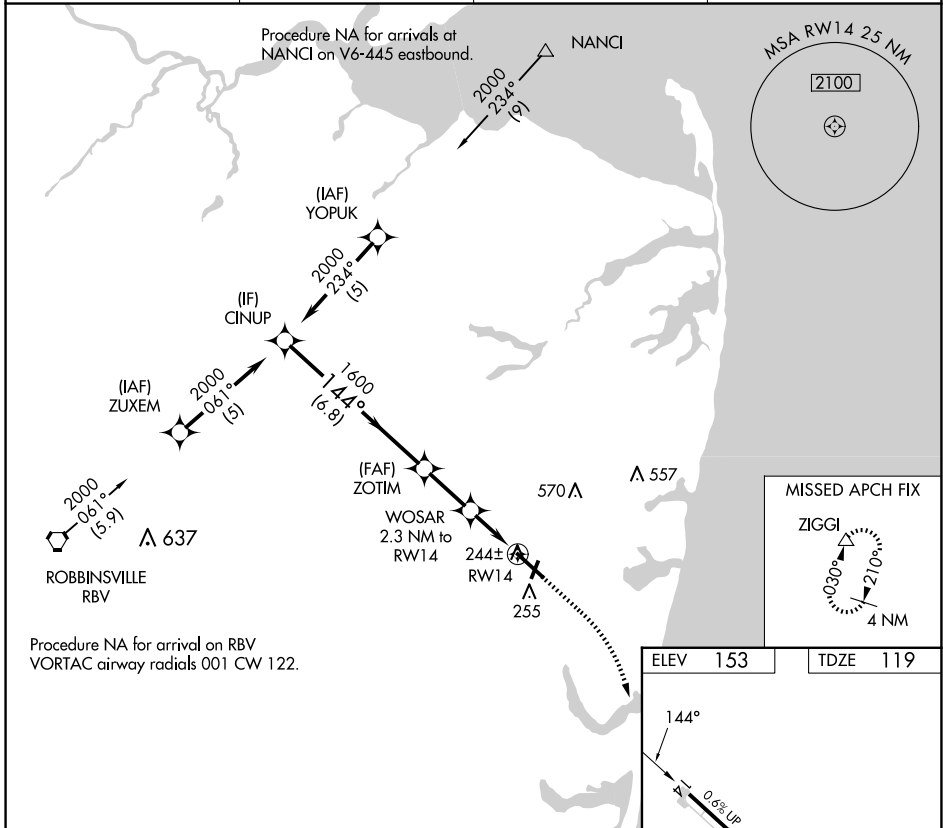
APP CRS	Rwy Idg	<b>7345</b>
<b>144°</b>	TDZE	<b>119</b>
	Apt Elev	<b>153</b>

# RNAV (GPS) RWY 14

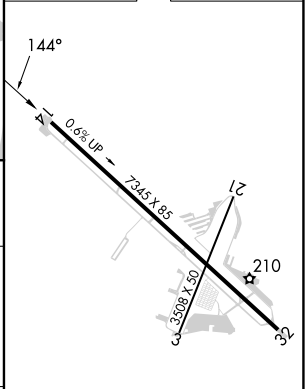
MONMOUTH EXEC (BLM)

RNP APCH	MISSED APPROACH: Climb to 600 then climbing right turn to 2000 direct ZIGGI and hold.
<p>▼ Circling Rwy 3, 21 NA at night. Rwy 14 helicopter visibility reduction below 3/4 SM NA.</p> <p>▲ VDP NA when using Lakehurst altimeter setting. When local altimeter setting not received, use Lakehurst altimeter setting; increase all MDA 40 feet and LNAV Cats C/D visibility 1/8 SM and Circling Cat C/D visibility 1/4 SM.</p>	

AWOS-3PT <b>121.625</b>	MC GUIRE APP CON <b>126.475 363.8</b>	CLNC DEL <b>126.15</b>	UNICOM <b>123.0</b> (CTAF)
----------------------------	--	---------------------------	-------------------------------



ELEV 153	TDZE 119
----------	----------



	6.8 NM		2.2 NM		0.9 NM		1.4 NM	
CATEGORY	A	B	C	D				
LNAV MDA	500-1	381 (400-1)	500-1 1/8	381 (400-1 1/8)				
CIRCLING	560-1 407 (500-1)	620-1 467 (500-1)	880-2 727 (800-2)	880-2 1/4 727 (800-2 1/4)				

MIRL Rwy 14-32
REIL Rwy 14

NE-2, 16 APR 2026 to 14 MAY 2026

NE-2, 16 APR 2026 to 14 MAY 2026