

WAAS CH 43569 W14A	APP CRS 144°	Rwy Idg TDZE Apt Elev	7345 119 153
--	------------------------	-----------------------------	---

RNAV (GPS) Z RWY 14

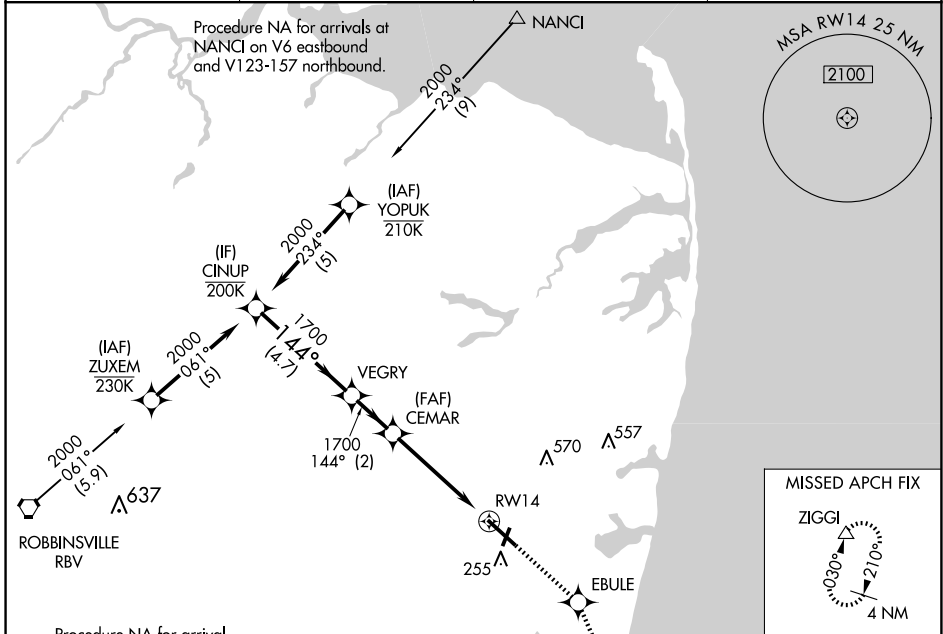
MONMOUTH EXEC (BLM)

RNP APCH - GPS.

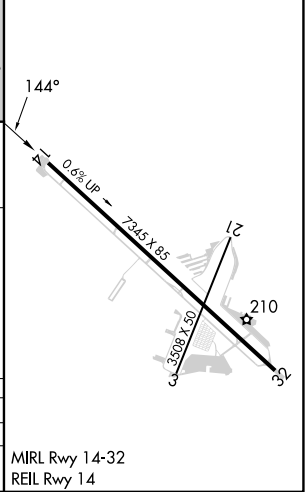
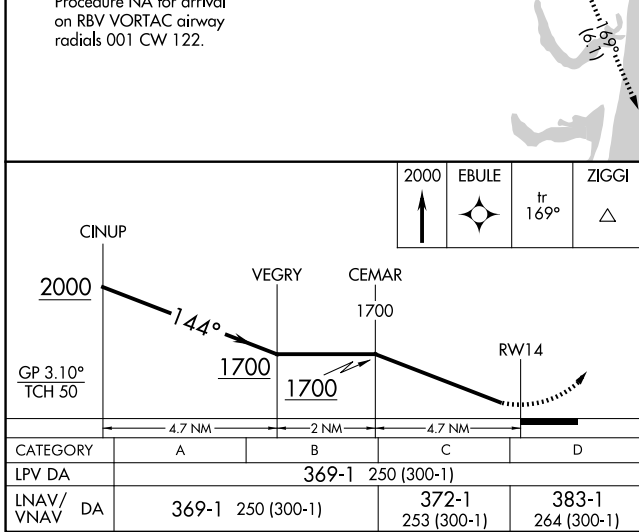
▼ For uncompensated Baro-VNAV systems, LNAV/VNAV NA below -15°C or above 54°C. Rwy 14 helicopter visibility reduction below 3/4 SM NA. When local altimeter setting not received, use Lakehurst altimeter setting and increase all DA by 39 feet. Baro-VNAV NA when using Lakehurst altimeter setting.

MISSED APPROACH:
Climb to 2000 direct
EBULE, track 169° to
ZIGGI and hold.

AWOS-3PT 121.625	MC GUIRE APP CON 126.475 363.8	CLNC DEL 126.15	UNICOM 123.0 (CTAF)
----------------------------	--	---------------------------	-------------------------------



ELEV 153	TDZE 119
----------	----------



NE-2, 16 APR 2026 to 14 MAY 2026

NE-2, 16 APR 2026 to 14 MAY 2026