

LOC I-SFM <b>111.5</b>	APP CRS <b>075°</b>	Rwy Ldg <b>6389</b> TDZE <b>241</b> Apt Elev <b>244</b>
---------------------------	------------------------	--

# ILS or LOC RWY 7

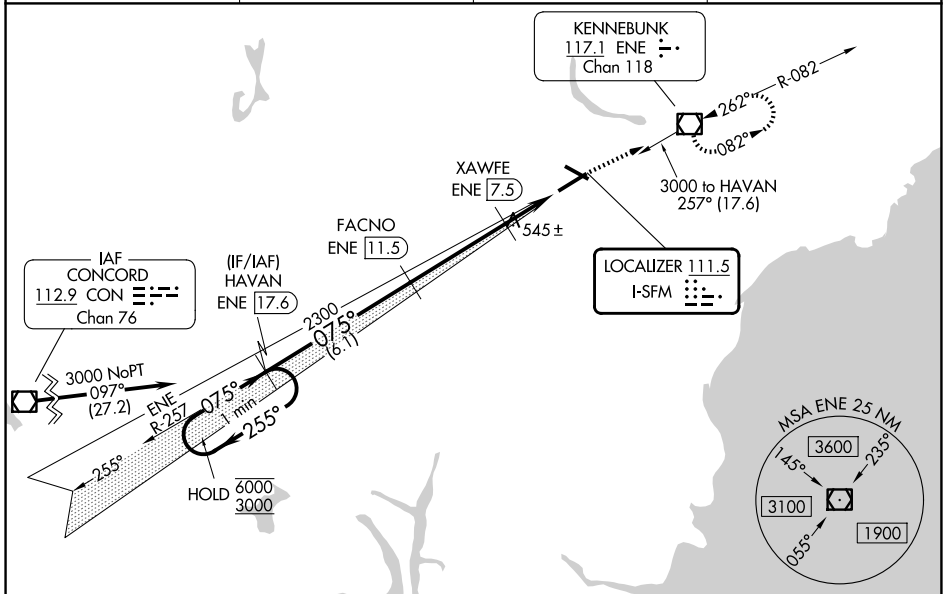
SANFORD SEACOAST RGNL (SFM)

DME required.

**⚠** Rwy 7 helicopter visibility reduction below 3/4 SM NA. VDP NA when using Rochester altimeter setting. DME from ENE VOR/DME. Simultaneous reception of I-SFM and ENE DME required. When local altimeter setting not received, use Rochester altimeter setting: increase S-ILS 7 DA to 479 feet; increase all MDAs 40 feet and S-LOC 7 Cats C/D visibility 1/8 SM and Circling Cat C visibility 1/4 SM.

MISSED APPROACH: Climb to 2500 direct ENE VOR/DME and hold, continue climb-in-hold to 2500.

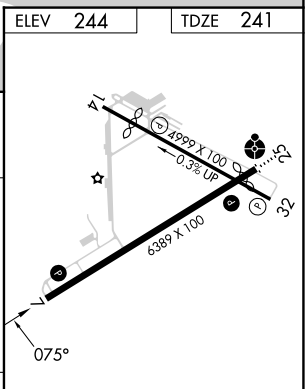
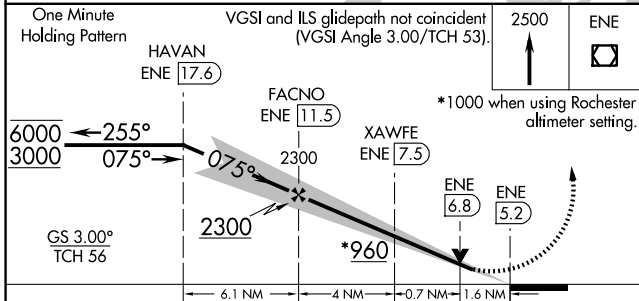
AWOS-3PT <b>120.025</b>	PORTLAND APP CON ★ <b>119.75 269.35</b>	CLNC DEL <b>121.725</b>	UNICOM <b>123.075 (CTAF) 0</b>
----------------------------	--	----------------------------	-----------------------------------



NE-1, 16 APR 2026 to 14 MAY 2026

NE-1, 16 APR 2026 to 14 MAY 2026

ELEV <b>244</b>	TDZE <b>241</b>
-----------------	-----------------



CATEGORY	A	B	C	D
S-ILS 7		441-3/4	200 (200-3/4)	
S-LOC 7	800-1	559 (600-1)	800-1 5/8	559 (600-1 5/8)
CIRCLING	800-1	556 (600-1)	1180-2 3/4 936 (1000-2 3/4)	1240-3 996 (1000-3)

REIL Rwy 7 0  
HIRL Rwy 7-25 0  
MIRL Rwy 14-32 0