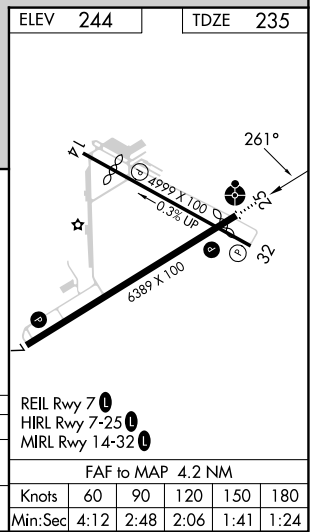
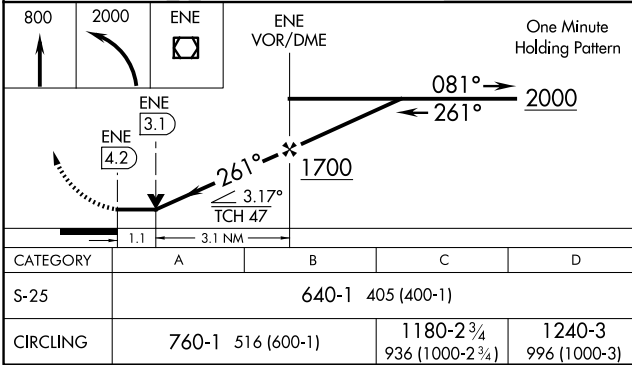
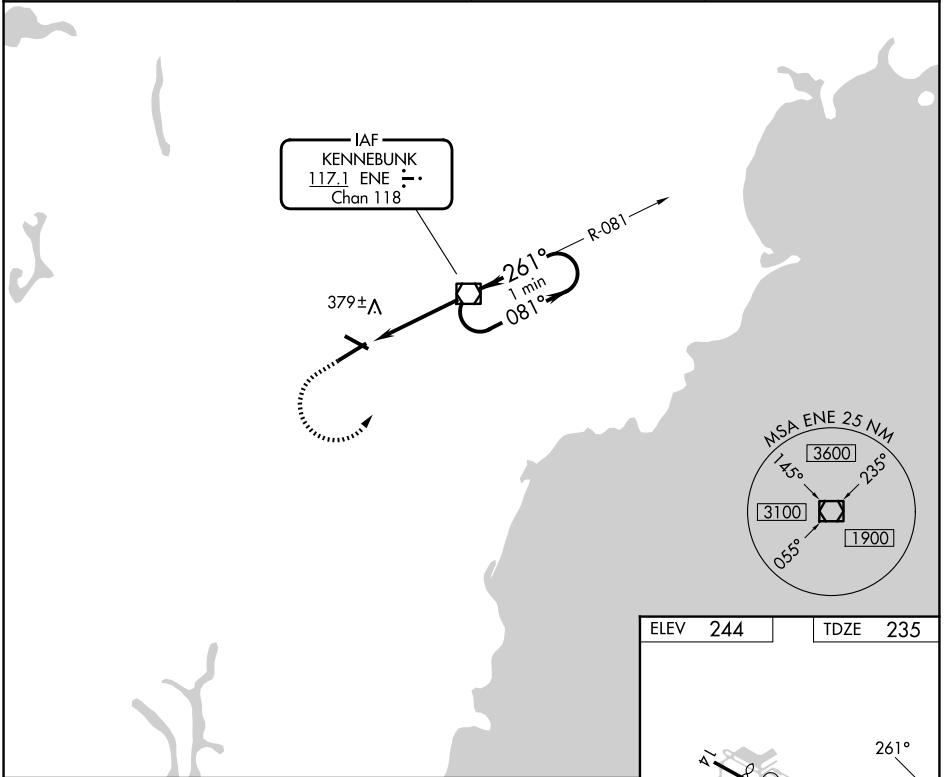


VORTAC ENE 117.1 Chan 118	APP CRS 261°	Rwy Ldg TDZE Apt Elev	6001 235 244
---	------------------------	-----------------------------	---

VOR RWY 25
SANFORD SEACOAST RGNL (SFM)

<p>⚠ Inoperative table does not apply to S-25 Cats A/B. For inoperative ODALS, increase S-25 Cats C/D visibility to 1$\frac{1}{8}$. When local altimeter setting not received, use Rochester, NH altimeter setting increase all MDA 40 feet, S-25 Cats C/D visibility $\frac{1}{8}$ SM, and Circling Cat C visibility $\frac{1}{4}$ SM; for inop ODALS, increase S-25 Cats C/D visibility to 1$\frac{1}{8}$. Rwy 25 helicopter visibility reduction below $\frac{3}{4}$ SM NA.</p>		<p>ODALS ⚠ ...</p>	<p>MISSED APPROACH: Climb to 800 then climbing left turn to 2000 direct ENE VOR/DME and hold.</p>
<p>AWOS-3PT 120.025</p>	<p>PORTLAND APP CON * 119.75 269.35</p>	<p>CLNC DEL 121.725</p>	<p>UNICOM 123.075 (CTAF) 0</p>



NE-1, 16 APR 2026 to 14 MAY 2026

NE-1, 16 APR 2026 to 14 MAY 2026