

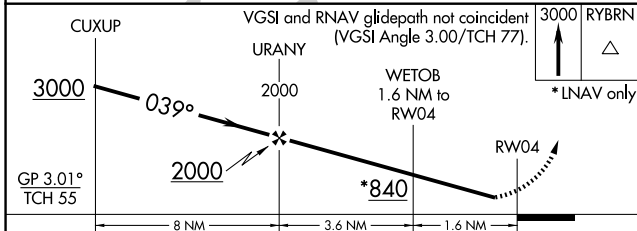
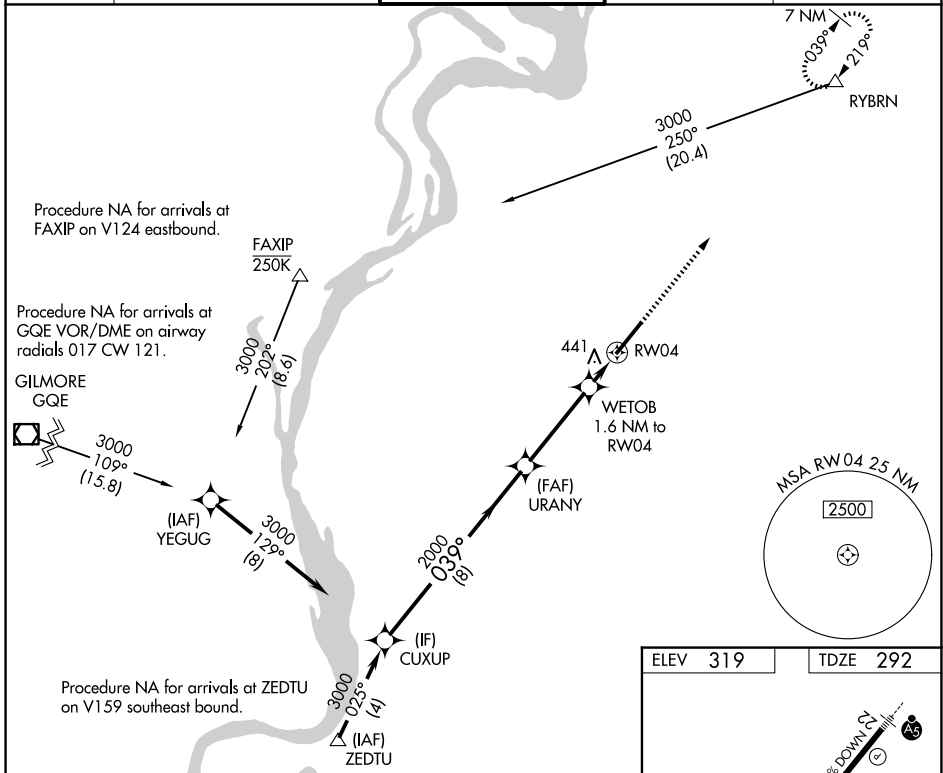
WAAS CH 78334 W04A	APP CRS 039°	Rwy Ldg TDZE Apt Elev	8001 292 319
--	------------------------	-----------------------------	---

RNAV (GPS) RWY 4

MILLINGTON/MEMPHIS (NQA)

RNP APCH.	<p>▼ Rwy 4 helicopter visibility reduction below 3/4 SM NA. For uncompensated Baro-VNAV systems, LNAV/VNAV NA below -15°C or above 54°C.</p>	<p>MISSED APPROACH: Climb to 3000 direct RYBRN and hold.</p>
-----------	--	--

AWOS-3 118.925	MEMPHIS APP CON 119.1 291.6 125.8 338.3 (176°-355°) (356°-175°)	MILLINGTON TOWER ★ 120.25 (CTAF) 0 340.2	GND CON 121.375	UNICOM 122.95
--------------------------	--	---	---------------------------	-------------------------



ELEV 319	TDZE 292
----------	----------

0.5% UP

800 x 130

0.6% DOWN

039°

TWR

REIL Rwy 22

REIL Rwy 4

HIRL Rwy 4-22

CATEGORY	A	B	C	D	E
LPV DA	492-3/4 200 (200-3/4)				
LNAV/VNAV DA	746-1 1/2 454 (500-1 1/2)				
LNAV MDA	700-1 408 (400-1) 700-1 1/4 408 (400-1 1/4)				
CIRCLING	800-1 481 (500-1)	820-1 501 (600-1)	920-1 3/4 601 (700-1 3/4)	960-2 1/4 641 (700-2 1/4)	960-2 1/2 641 (700-2 1/2)

SE-1, 16 APR 2026 to 14 MAY 2026

SE-1, 16 APR 2026 to 14 MAY 2026