

WAAS CH 53417 W35A	APP CRS 353°	Rwy Idg TDZE 1561 Apt Elev 1563
--	------------------------	---

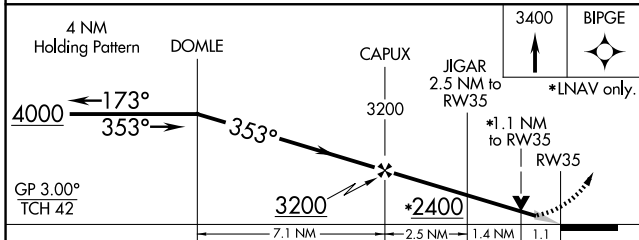
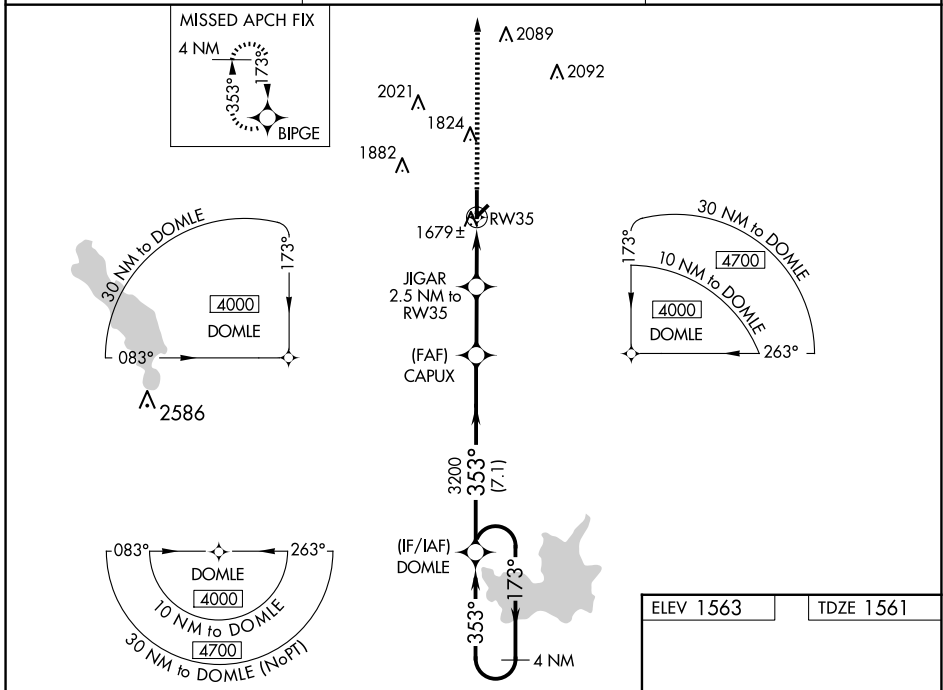
RNAV (GPS) RWY 35

HOBART RGNL (HBR)

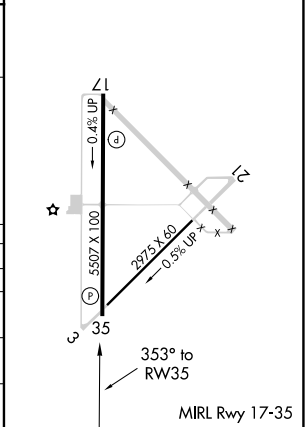
⚠ For uncompensated Baro-VNAV systems, LNAV/VNAV NA below -18°C (0°F) or above 45°C (113°F). DME/DME RNP-0.3 NA. When local altimeter setting not received, use Altus/Quartz Mountain Rgnl altimeter setting and increase LPV DA to 1882 feet and visibility all Cats ¼ SM; increase LNAV/VNAV DA to 2020 feet and visibility all Cats ¼ SM; increase all MDAs 80 feet and Circling Cat C visibility ¼ SM. Baro-VNAV NA when using Altus/Quartz Mountain Rgnl altimeter setting. VDP NA with Altus/Quartz Mountain Rgnl altimeter setting.

MISSED APPROACH: Climb to 3400 direct BIPGE and hold.

ASOS 133.325	ALTUS APP CON★ 125.1 353.7	UNICOM 122.8 (CTAF)
------------------------	--------------------------------------	-------------------------------



ELEV 1563	TDZE 1561
-----------	-----------



CATEGORY	A	B	C	D
LPV DA	1811-1 250 (300-1)			
LNAV/VNAV DA	1949-1¼ 388 (400-1¼)			
LNAV MDA	1940-1 379 (400-1)	1940-1½ 379 (400-1½)	1940-2 379 (400-2)	
CIRCLING	1980-1 417 (500-1)	2020-1 457 (500-1)	2320-2¼ 757 (800-2¼)	2460-3 897 (900-3)

SC-1, 16 APR 2026 to 14 MAY 2026

SC-1, 16 APR 2026 to 14 MAY 2026