

VORTAC HBR <b>115.85</b> Chan 105(Y)	APP CRS <b>354°</b>	Rwy Idg TDZE Apt Elev	<b>5507</b> <b>1561</b> <b>1563</b>
--	------------------------	-----------------------------	---

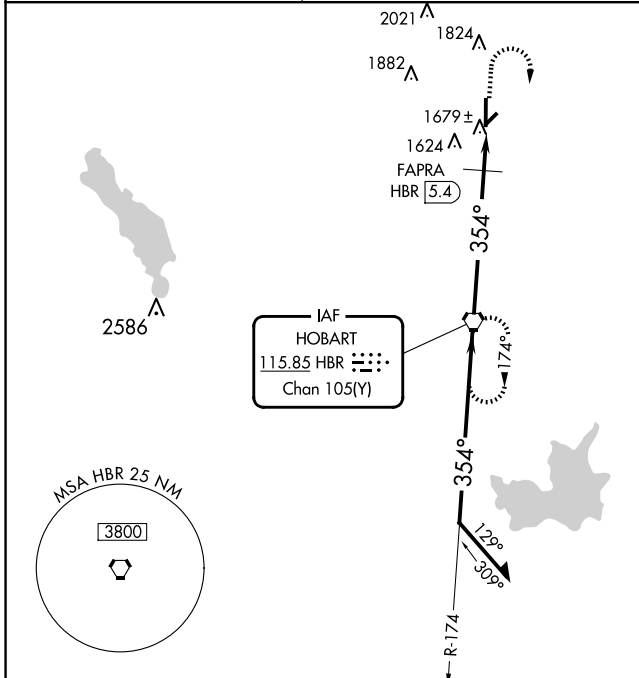
# VOR RWY 35

HOBART RGNL (HBR)

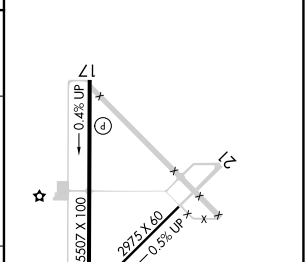
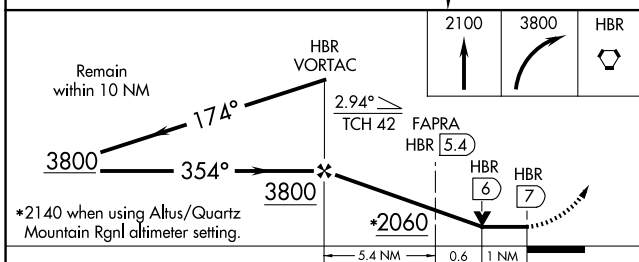
**⚠** When local altimeter setting not received, use Altus/Quartz Mountain Rgnl altimeter setting and increase all MDAs 80 feet, increase S-35 Cats C/D and Circling Cat C visibility ¼ SM, increase FAPRA fix minimums S-35 Cats C/D and Circling Cat C visibility ¼ SM. VDP NA when using Altus/Quartz Mountain Rgnl altimeter setting.

MISSED APPROACH: Climb to 2100, then climbing right turn to 3800 direct HBR VORTAC and hold.

ASOS <b>133.325</b>	ALTUS APP CON ★ <b>125.1 353.7</b>	UNICOM <b>122.8 (CTAF)</b>
------------------------	---------------------------------------	-------------------------------



ELEV 1563	TDZE 1561
-----------	-----------



CATEGORY	A	B	C	D
S-35	2060-1	499 (500-1)	2060-1¼ 499 (500-1¼)	2060-1½ 499 (500-1½)
CIRCLING	2060-1	497 (500-1)	2320-2¼ 757 (800-2¼)	2460-3 897 (900-3)
FAPRA FIX MINIMUMS				
S-35	1980-1	419 (500-1)	1980-1¼	419 (500-1¼)
CIRCLING	1980-1 417 (500-1)	2020-1 457 (500-1)	2320-2¼ 757 (800-2¼)	2460-3 897 (900-3)

MIRL Rwy 17-35	
FAF to MAP 7 NM	
Knots	60 90 120 150 180
Min:Sec	7:00 4:40 3:30 2:48 2:20

SC-1, 16 APR 2026 to 14 MAY 2026

SC-1, 16 APR 2026 to 14 MAY 2026