

HI-TACAN X RWY 23

TACAN NBC Chan 42	APCH CRS 221°	Rwy ldg 12,202 TDZE 16 Arprt Elev 37
-----------------------------	-------------------------	---

[USN]

BEAUFORT MCAS (MERRITT FLD) (KNBC)

ALSF-1

 A1

 MISSED APPROACH: Climb to 500 then climbing right turn to 3000, join NBC TACAN R-307 to direct BRAYS and hold.

* When ALS inop, increase vis to 1 mile.

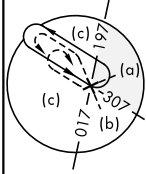
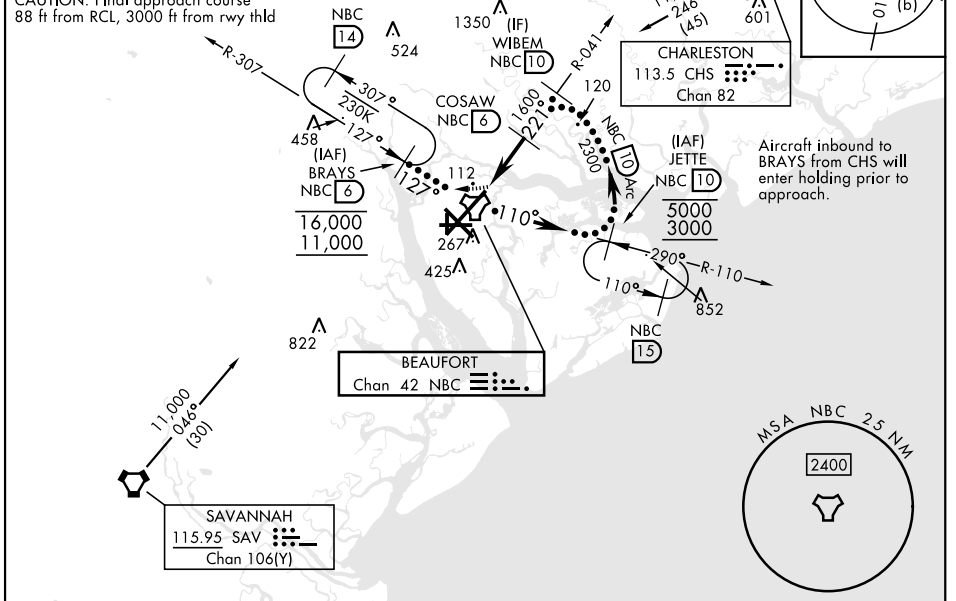
ATIS ★ 279.525	APP CON 125.125 292.125 (ABV 3000) 123.7 269.125 (3000 and BLW)	TOWER ★ 119.05 342.875	GND CON 128.15 348.625	ASR/PAR
--------------------------	---	----------------------------------	----------------------------------	---------

Knots	60	120	180	240	300	360
V/V(fpm)	545	1090	1635	2180	2725	3270

Min climb of 545 ft/NM to 3000 - Controlling Obstacle Unk

CAUTION: Intmed seg len 4 NM

CAUTION: Final approach course 88 ft from RCL, 3000 ft from rwy thld

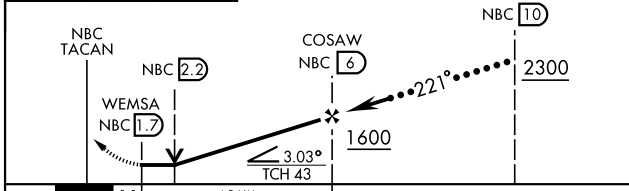
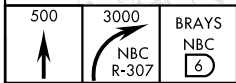


Aircraft inbound to BRAYS from CHS will enter holding prior to approach.

SE-2, 16 APR 2026 to 14 MAY 2026

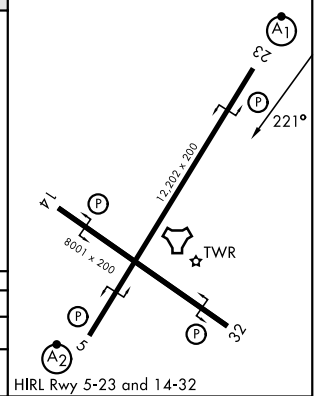
SE-2, 16 APR 2026 to 14 MAY 2026

EMERG SAFE ALT 100 NM 3100



CATEGORY	C	D	E
S-23 *	380-¾	364	(400-¾)
CIRCLING	580-1½ 543 (600-1½)	600-2 563 (600-2)	740-2 ½ 703 (800-2½)

ELEV	37	TDZE	16
------	----	------	----



HI-TACAN X RWY 23