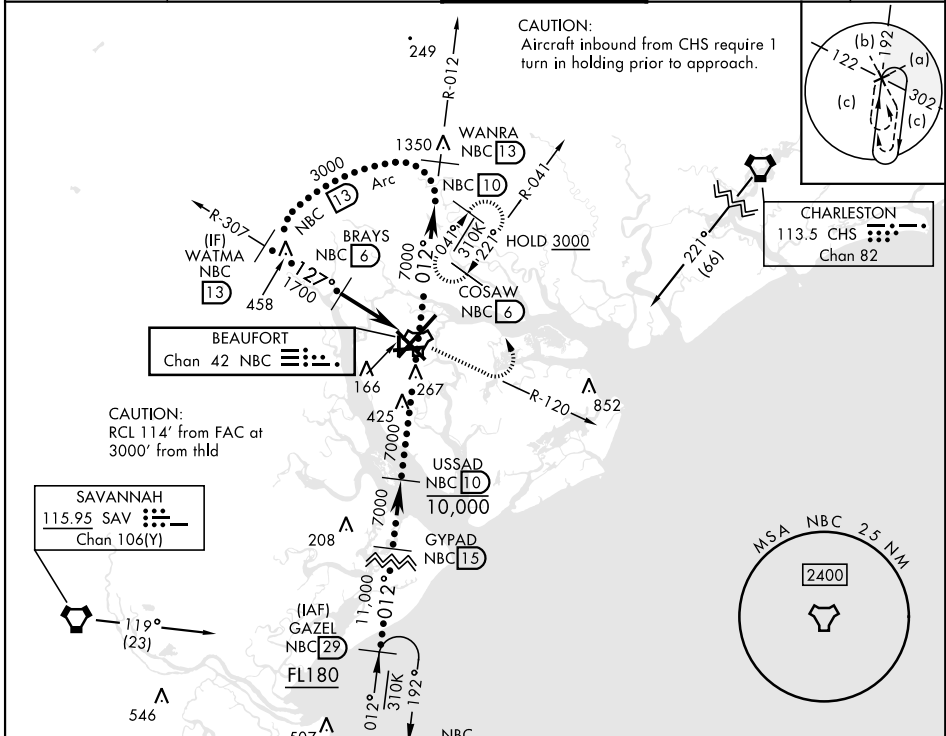


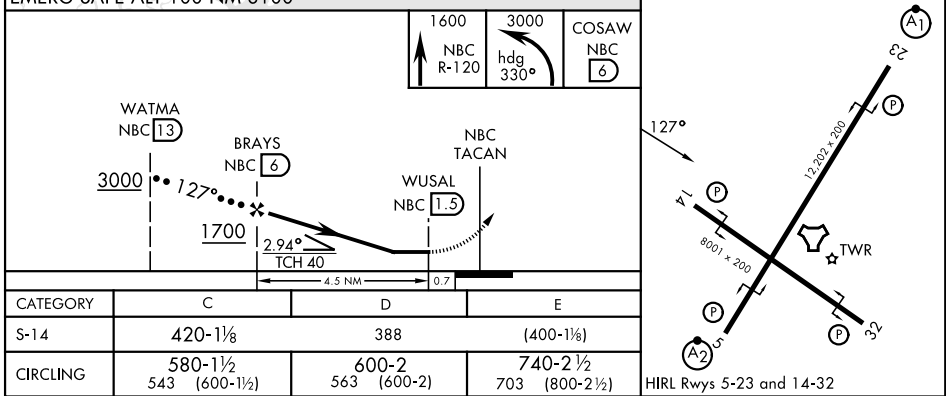
HI-TACAN Y RWY 14

TACAN NBC Chan 42	APCH CRS 127°	Rwy ldg TDZE Arpt Elev 8000 32 37	[USN]	BEAUFORT MCAS (MERRITT FLD) (KNBC)
RADAR required		MISSED APPROACH: Climb to 1600 on NBC TACAN R-120, then climbing left turn to 3000 via hdg 330° to intercept NBC R-041 to 6 DME (COSAW) and hold. Continue climb in hold to 3000.		

ATIS ★ 279.525	APP CON 125.125 292.125 (ABV 3000) 123.7 269.125 (3000 and BLW)	TOWER ★ 119.05 342.875	GND CON 128.15 348.625	ASR/PAR
--------------------------	---	----------------------------------	----------------------------------	---------



ELEV	37	TDZE	32
------	----	------	----



HI-TACAN Y RWY 14



SE-2, 16 APR 2026 to 14 MAY 2026

SE-2, 16 APR 2026 to 14 MAY 2026