

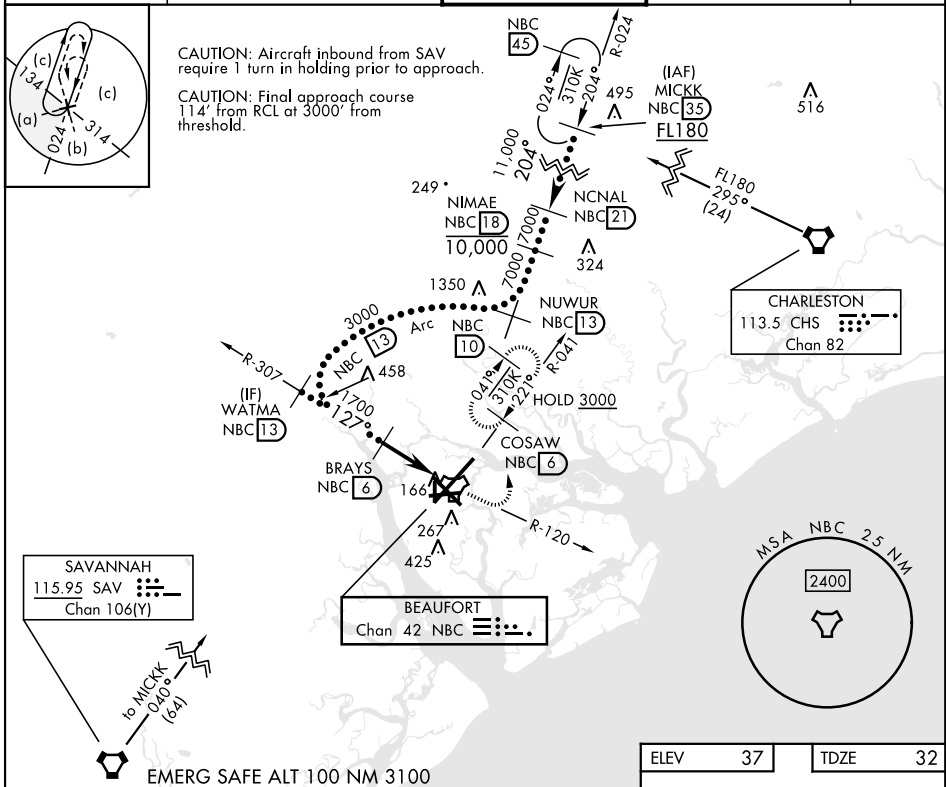
HI-TACAN Z RWY 14

TACAN NBC Chan 42	APCH CRS 127°	Rwy Idg TDZE Arprt Elev	8000 32 37	[USN]	BEAUFORT MCAS (MERRITT FLD) (KNBC)
-----------------------------	-------------------------	-------------------------------	---------------------------------------	-------	------------------------------------

RADAR required

▼ MISSED APPROACH: Climb to 1600 on NBC TACAN R-120, then climbing left turn to 3000 via hdg 330° to intercept NBC R-041 to 6 DME (COSAW) and hold. Continue climb in hold to 3000.

ATIS ★ 279.525	APP CON 125.125 292.125 (ABV 3000) 123.7 269.125 (3000 and BLW)	TOWER ★ 119.05 342.875	GND CON 128.15 348.625	ASR/PAR
--------------------------	---	----------------------------------	----------------------------------	---------



SE-2, 16 APR 2026 to 14 MAY 2026

SE-2, 16 APR 2026 to 14 MAY 2026

ELEV	37	TDZE	32
CATEGORY	C	D	E
S-14	420-1½	388	(400-1½)
CIRCLING	580-1½ 543 (600-1½)	600-2 563 (600-2)	740-2½ 703 (800-2½)
HIRL Rwy 5-23 and 14-32			

HI-TACAN Z RWY 14