

HI-TACAN Z RWY 23

TACAN Chan 42	NBC 221°	APCH CRS 221°	Rwy ldg 12,202 TDZE 16 Arpt Elev 37
-------------------------	--------------------	-------------------------	--

[USN]

BEAUFORT MCAS (MERRITT FLD) (KNBC)

*When ALS inop, increase vis to 1 mile.



MISSED APPROACH: Climb to 500, then climbing right turn to 3000, intercept NBC TACAN R-307 direct BRAYS and hold.

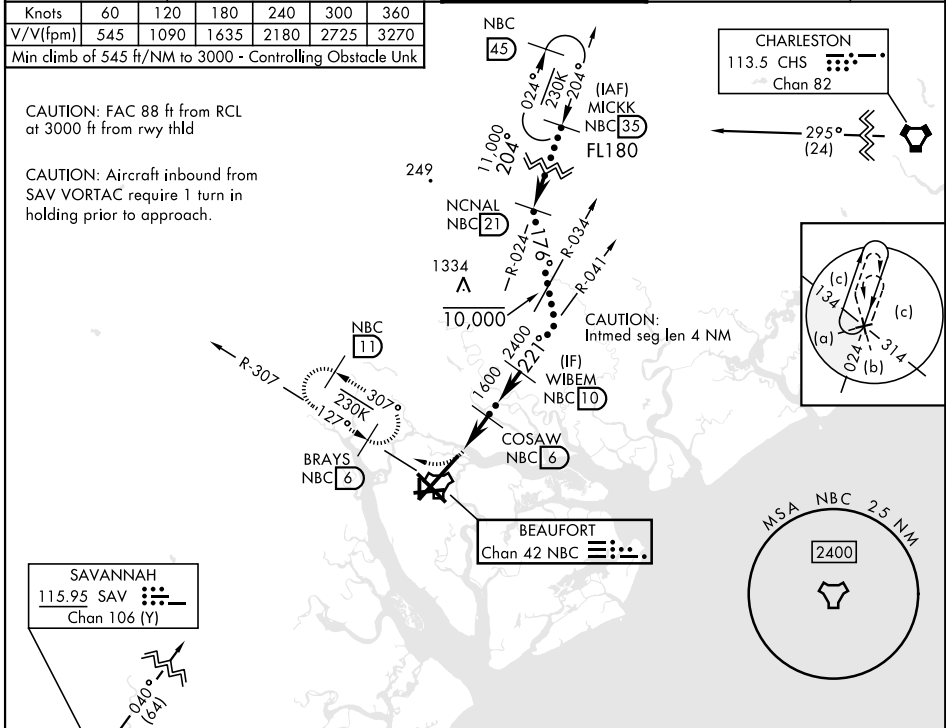
ATIS ★ 279.525	APP CON 125.125 292.125 (ABV 3000) 123.7 269.125 (3000 and BLW)	TOWER ★ 119.05 342.875	GND CON 128.15 348.625	ASR/PAR
--------------------------	---	----------------------------------	----------------------------------	---------

Knots	60	120	180	240	300	360
V/V(fpm)	545	1090	1635	2180	2725	3270

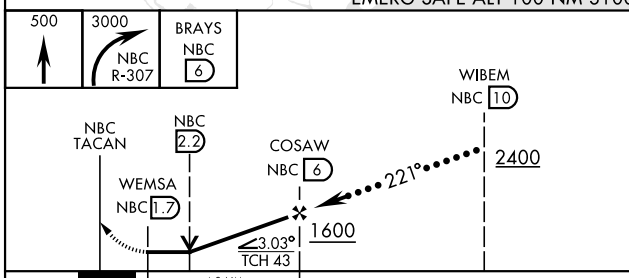
Min climb of 545 ft/NM to 3000 - Controlling Obstacle Unk

CAUTION: FAC 88 ft from RCL at 3000 ft from rwy thld

CAUTION: Aircraft inbound from SAV VORTAC require 1 turn in holding prior to approach.

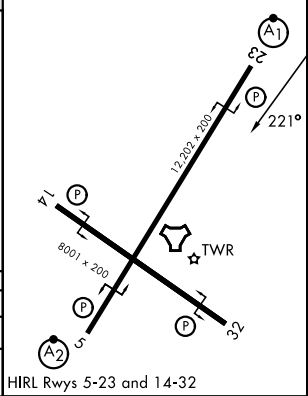


EMERG SAFE ALT 100 NM 3100



CATEGORY	C	D	E
S-23 *	380- $\frac{3}{4}$	364	(400- $\frac{3}{4}$)
CIRCLING	580-1 $\frac{1}{2}$ 543 (600-1 $\frac{1}{2}$)	600-2 563 (600-2)	740-2 $\frac{1}{2}$ 703 (800-2 $\frac{1}{2}$)

ELEV	37	TDZE	16
------	----	------	----



HI-TACAN Z RWY 23

SE-2, 16 APR 2026 to 14 MAY 2026

SE-2, 16 APR 2026 to 14 MAY 2026