

BEAUFORT, SOUTH CAROLINA

RNAV (GPS) RWY 5


WAAS Chan 90095 W05A	APCH CRS 047°	Rwy Idg 12,202 TDZE 37 Arpt Elev 37
--	-------------------------	--

[USN]

BEAUFORT MCAS (MERRITT FLD) (KNBC)

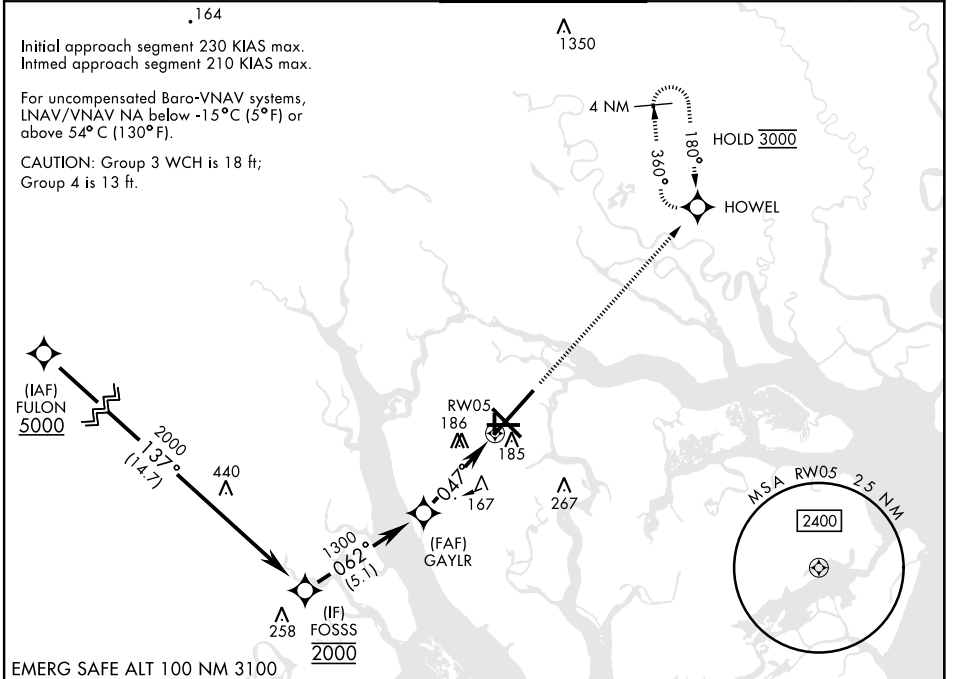
RNP APCH
RADAR required
<p>▼ * When ALS inop, increase vis to 1 mile. ** When ALS inop, increase CAT AB vis to 1 mile, CAT CD to 1½ miles.</p>

SALSF



MISSED APPROACH: Climb to 3000 direct HOWEL and hold, continue climb-in-hold to 3000.

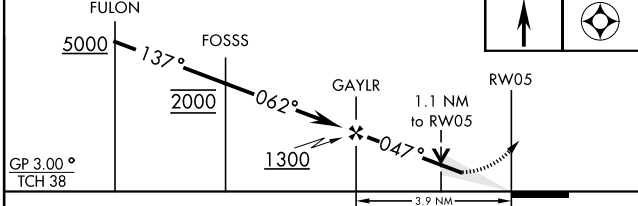
ATIS ★ 279.525	APP CON 125.125 292.125 (ABV 3000) 123.7 269.125 (3000 and BLV)	TOWER ★ 119.05 342.875	GND CON 128.15 348.625	ASR/PAR
--------------------------	---	----------------------------------	----------------------------------	---------



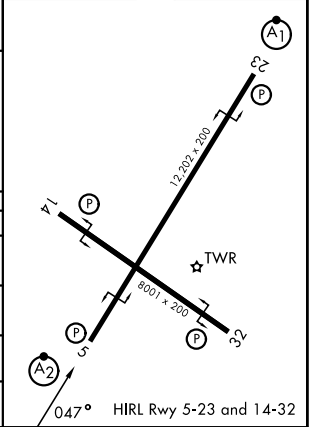
SE-2, 16 APR 2026 to 14 MAY 2026

SE-2, 16 APR 2026 to 14 MAY 2026

EMERG SAFE ALT 100 NM 3100	3000	HOWEL	ELEV 37	TDZE 37
----------------------------	------	-------	---------	---------



CATEGORY	A	B	C	D
LPV DA	237-¾		200	(200-¾)
LNAV/ * VNAV DA	409-¾		372	(400-¾)
LNAV MDA	420-¾	383 (400-¾)	420-7/8	383 (400-7/8)
CIRCLING	560-1	523 (600-1)	580-1½ 543 (600-1½)	600-2 563 (600-2)



BEAUFORT, SOUTH CAROLINA

32°29'N-80°43'W

BEAUFORT MCAS (MERRITT FLD) (KNBC)

Amdt 6 11JUL24

RNAV (GPS) RWY 5