

TACAN RWY 14

TACAN NBC Chan 42	APCH CRS 127°	Rwy Ldg TDZE Arprt Elev 8000 32 37
-----------------------------	-------------------------	---

[USN]

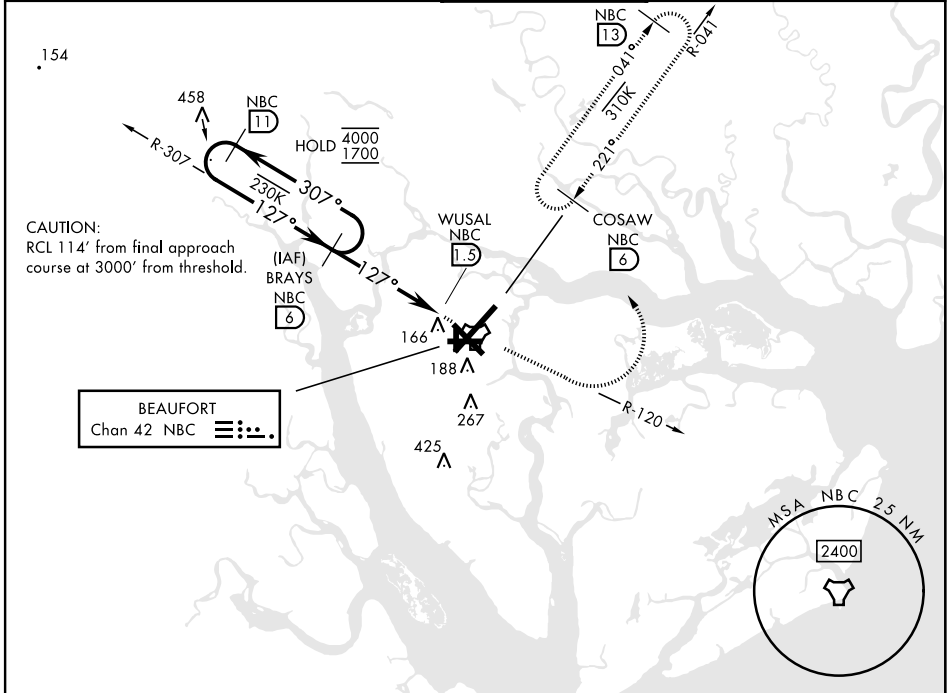
BEAUFORT MCAS (MERRITT FLD) (KNBC)

RADAR required

▼

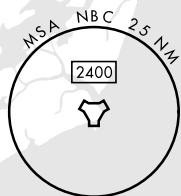
MISSED APPROACH: Climb to 1600 on NBC TACAN R-120, then climbing left turn to 3000 via hdg 330° to intercept NBC R-041 to 6 DME (COSAW) and hold. Continue climb in hold to 3000.

ATIS ★ 279.525	APP CON 125.125 292.125 (ABV 3000) 123.7 269.125 (3000 and BLV)	TOWER ★ 119.05 342.875	GND CON 128.15 348.625	ASR/PAR
--------------------------	---	----------------------------------	----------------------------------	---------



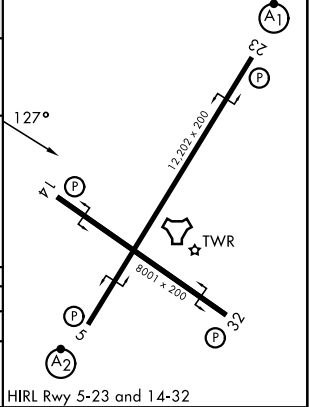
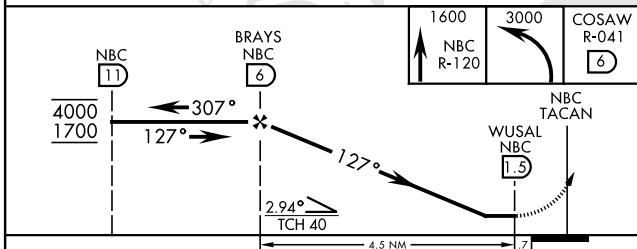
CAUTION:
RCL 114' from final approach
course at 3000' from threshold.

BEAUFORT
Chan 42 NBC



ELEV	37	TDZE	32
------	----	------	----

EMERG SAFE ALT 100 NM 3100



CATEGORY	A	B	C	D	E
S-14	420-1 388 (400-1)		420-1 1/8 388 (400-1 1/8)		
CIRCLING	560-1 523 (600-1)		580-1 1/2 543 (600-1 1/2)	600-2 563 (600-2)	740-2 1/2 703 (800-2 1/2)

HIRL Rwy 5-23 and 14-32

TACAN RWY 14

SE-2, 16 APR 2026 to 14 MAY 2026

SE-2, 16 APR 2026 to 14 MAY 2026